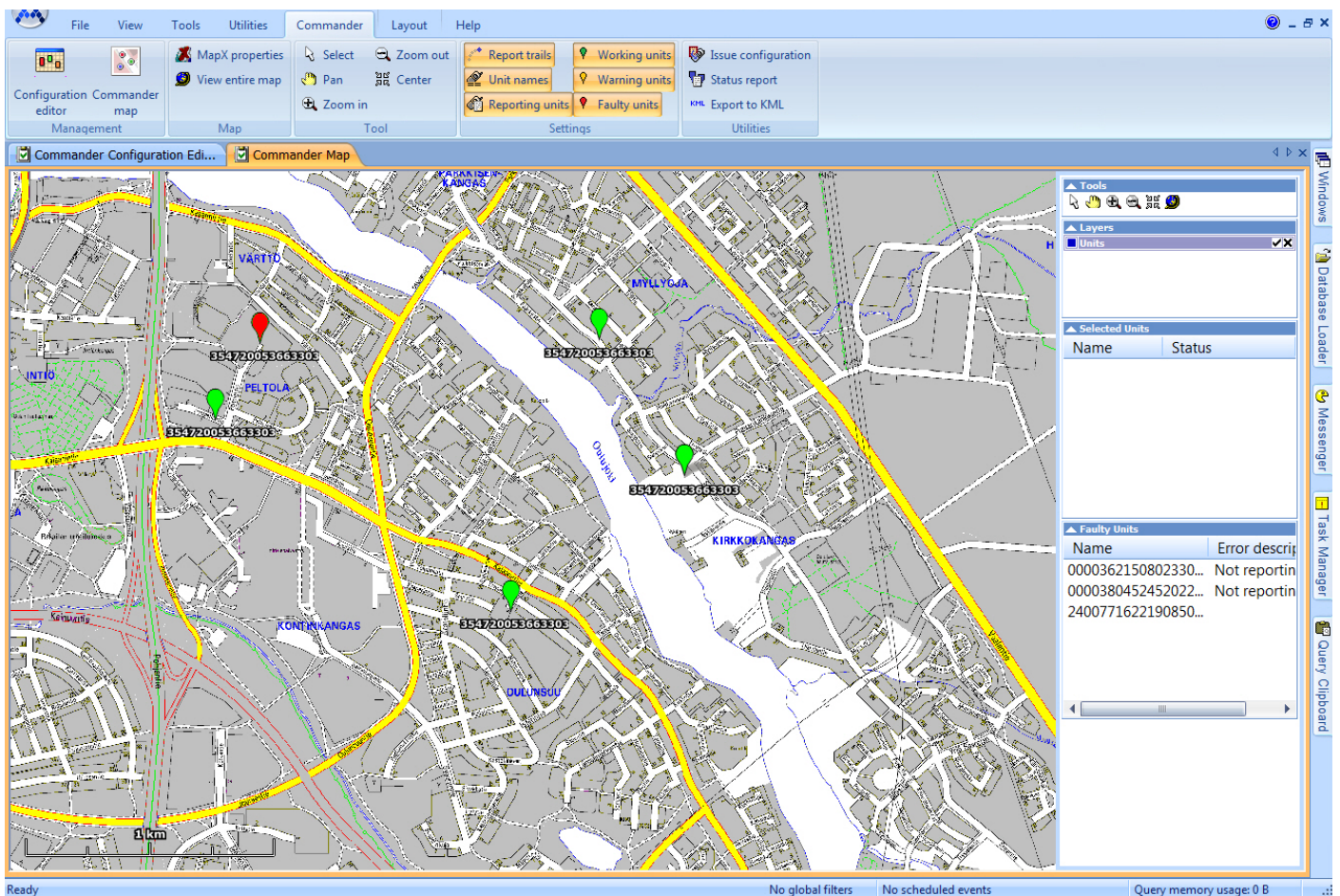


NEMO COMMANDER

CENTRALIZED REMOTE CONTROL OF FIELD MEASUREMENT SYSTEMS

Drive testing is a very demanding activity that can go wrong for many different reasons. It is estimated that between ten and twenty per cent of drive tests fail due to human error.

With Nemo Commander operators can fully leverage the benefits of field measurements to increase the Quality-of-Service of their networks while reducing the overall cost of drive testing. By using Nemo Commander to streamline resources and enhance control over drive test operations, up to 40% of annual drive test costs can be saved.



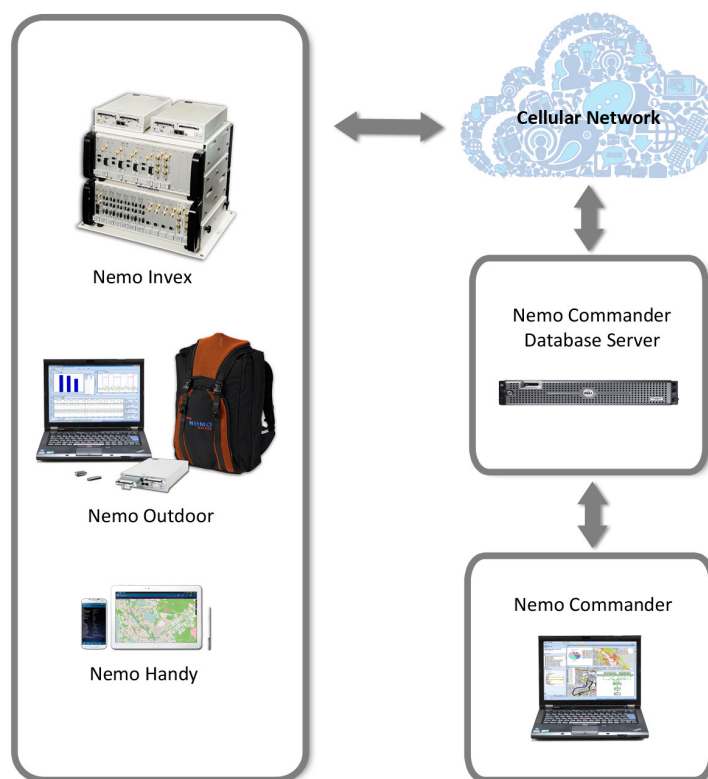
REDUCED COSTS THROUGH REMOTE MEASUREMENT UNIT CONTROL

Nemo Commander is a platform for centrally controlled network testing. It allows a single user to remotely operate Nemo Outdoor, Nemo Invex, Nemo Handy-A, and Nemo Explorer-1 test units in the field, tracking their location and status. This eliminates the need for two technicians in a test vehicle. Nemo Commander supports all devices and test protocols currently supported with Nemo tools, including scanning receivers.

With Nemo Commander, field unit configurations can be verified remotely to avoid failed drive tests. In addition, hardware failures, incorrect scripts and other issues can be spotted and corrected immediately rather than waiting until the end of a one-week test campaign. By reacting without delay, both time and money can be saved.

The Nemo Commander system consists of the Nemo Commander software; Nemo Outdoor, Nemo Invex, or Nemo Handy-A test units with the Remote option; and the Nemo Commander Database Server.

Nemo Commander System



Key benefits

- Control field measurement systems centrally
- Reduce drive test costs by ~40%
- Near real-time status and configuration check - spot problems and reconfigure quickly
- Near real-time location tracking
- Single user is able to monitor and manage numerous Nemo measurement kits on the field