

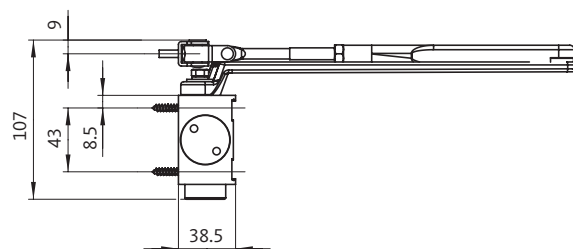
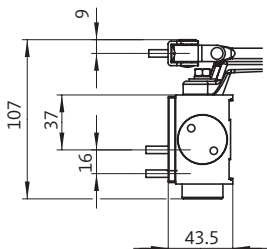
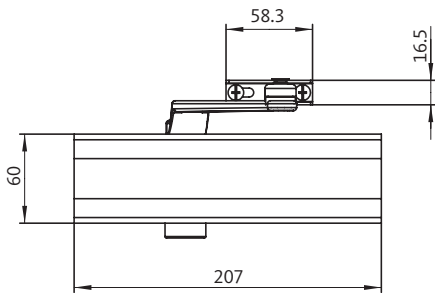
# OTS 130

Tested according to EN 1154



## Product features

- Closing force sizes EN 2 / 3 / 4: sizes can be adjusted by moving the closer and turning the scissor-action arm bearing block
- Valve functions can be adjusted steplessly from the front:
  - Closing speed
  - Latching speed
- Thermomatic valve ensures that the closing function continues to work in the event of temperature fluctuations
- Safety valve in the closer protects against overload
- Max. door opening and closing angle 180° <sup>[1]</sup>
- Controlled closing from every opening angle



without mounting plate

with mounting plate



04 1121-CPD-AD0285

EN 1154: 1996 + A1: 2002

4	8	4	1	1	4
		2			