



HEIMDALL

203BB-02 S3 WR SRC

Standard EN ISO 20345:2011

Sizes 37 - 47



Waterproof and breathable GORE-TEX Performance Comfort Footwear membrane extremely breathable, comfortable and resistant to water penetration.



SRC Slip resistant



A Antistatic



P Perforation resistance



Resistant to 200 joules



E Energy Absorption of seat region



FO Fuel oil resistant sole



WRU Water penetration upper



WR Water resistance

Calf leather

Full grain Ultimate leather with high breathability and maximum water resistance.

Double density polyurethane sole Icon PU/PU: utmost slip resistant sole designed to provide excellent all-round performances.

Reflective material.

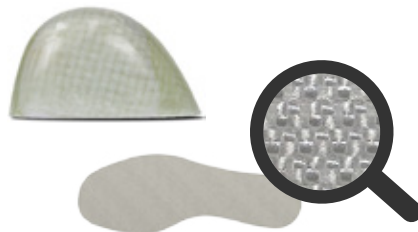
The midsole is made of the special microcell compound Esolight 1.0 that provides an excellent energy absorption. Esolight 1.0 provides a correct distribution of the body weight and impacts during walking, thus reducing the stress on the joints. The outsole is made of the Esolight 2.0 compound, for high durability and slip resistance.



PZX Fiberglass toe cap (200 Joule) and perforation resistant Txzero insole made of ultimate textile material, offering outstanding lightness, protection and flexibility.

Outsole ICON PU/PU

- SRC Slip resistant outsole
- FO Fuel resistance
- Wide fit for maximum strength and protection
- Grip on ladders
- Shock absorption cell



Icon · I-01

- Anatomic footbed made of open cell polyurethane foam
- Shock absorption area
- Extremely breathable
- Antibacterial Foam

