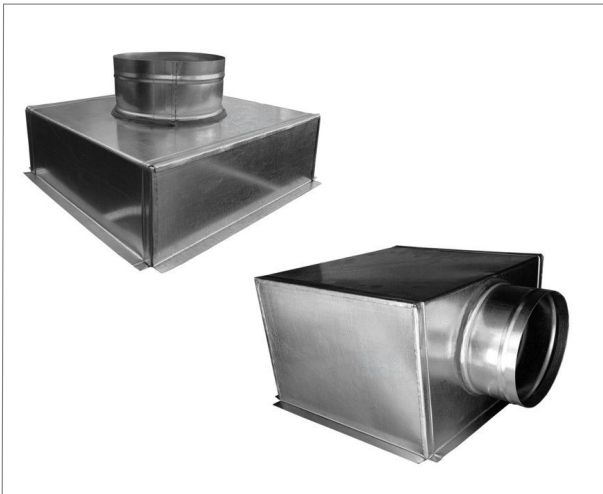


# Plenum box

## PL



### Specifications

Plenum box.

For connecting ventilation grilles and diffusers to the flexible ducts.

### Material

Galvanized steel.

For exhaust grilles / diffusers is manufactured without thermal insulation.

For supply grilles / diffusers is manufactured with inside thermal insulation.

Insulation: synthetic rubber foam with closed cell structure (especially designed for air conditioning systems).

Order code:	PL - N	aaa x bbb	hhh	Ød	A
Product code					
N - uninsulated					
I - thermal insulation*					
size L (of grille / diffuser)					
size H (of grille / diffuser)					
plenum box height H**					
diameter Ød (flexible duct connection)					
A - top connection					
L - side connection					
not specified - without balancing damper					
DSL - balancing damper on connection***					

\*6 mm synthetic rubber closed cell insulation

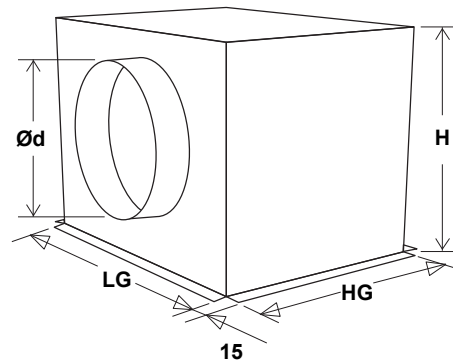
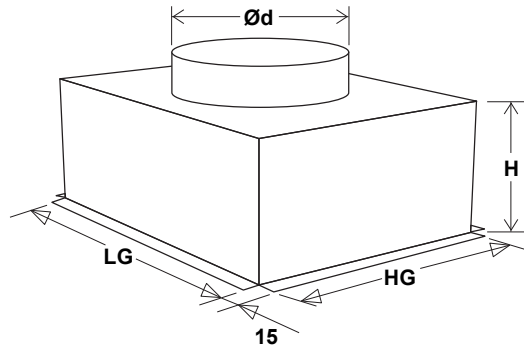
\*\*if not specified, standard execution:

H=100 mm for PL-...A

H=Ød+50 mm for PL-...L

\*\*\*for diffusers which cannot adapt opposed blade damper (ex.: SWR)

### Technical data



Ød - flexible duct connection diameter (mm)

H - plenum box height (mm)

LG - size corresponding to L grille / diffuser (mm)

HG - size corresponding to H grille / diffuser (mm)

Standard execution is with external border 15 mm.

For 4-way ceiling diffusers is executed without external border.

# Plenum box

# PL

---

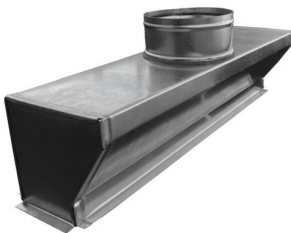
## Execution variants



Standard plenum box with top connection.



Standard plenum box with side connection.



Special plenum box with expanded top side.  
For grilles / diffusers with smaller size than connection size.



Special plenum box with oval connection top side.  
For grilles / diffusers with smaller size than connection size,  
and in available space cannot be fitted an expanded plenum box.