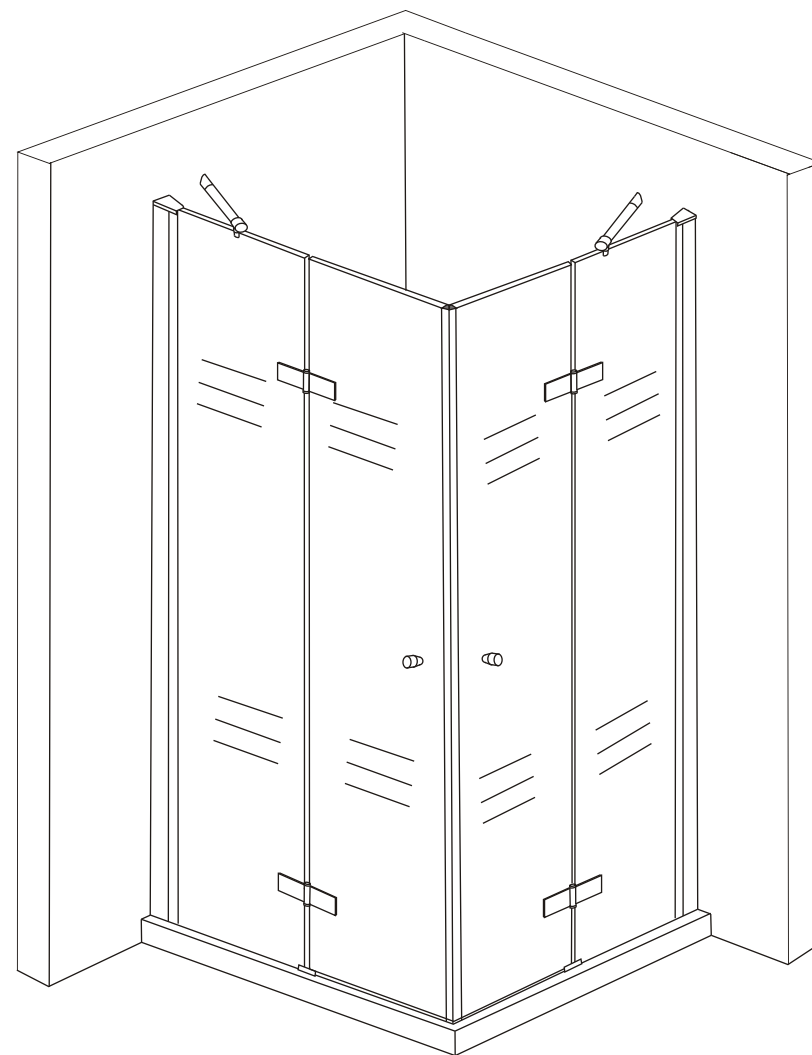


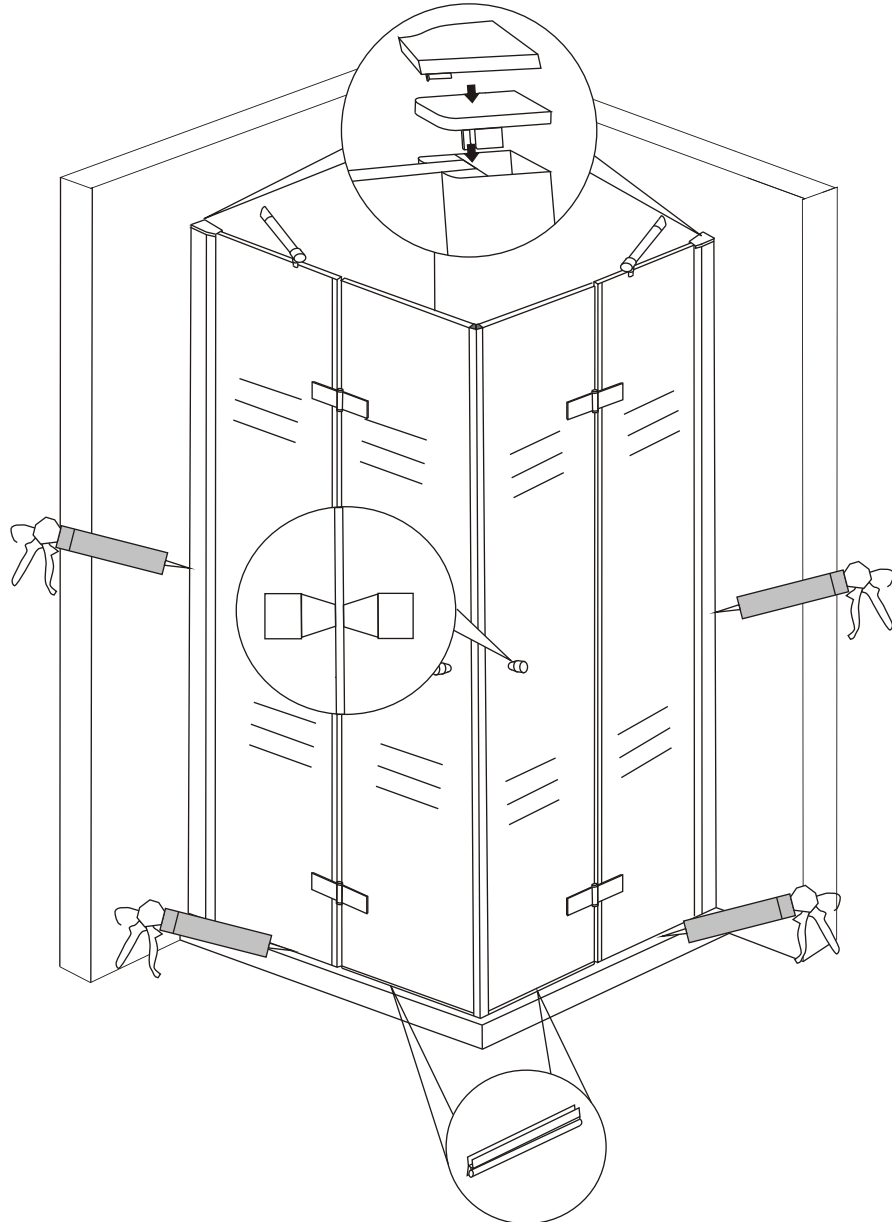
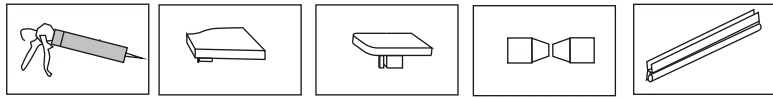
INSTALLATION MANUAL



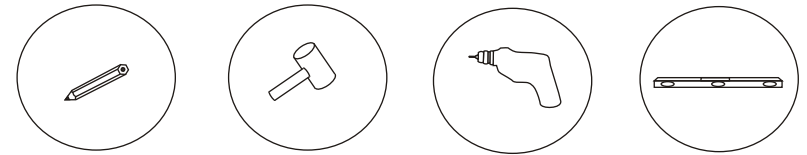
BL-051

RoHS  ISO9001:2000

1. Install the handle on the glass.
2. Put the cover on the aluminum profile as picture shows.
3. Put the silicon gel on the glass as pictures and install the gasket on the bottom of the door glass.



TOOL PICTURE

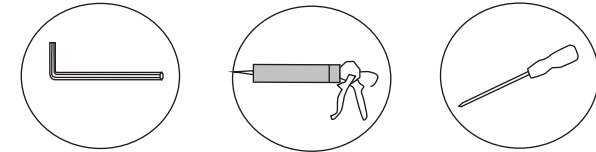


Pencil

Rubber hammer

Drill machine

Level ruler

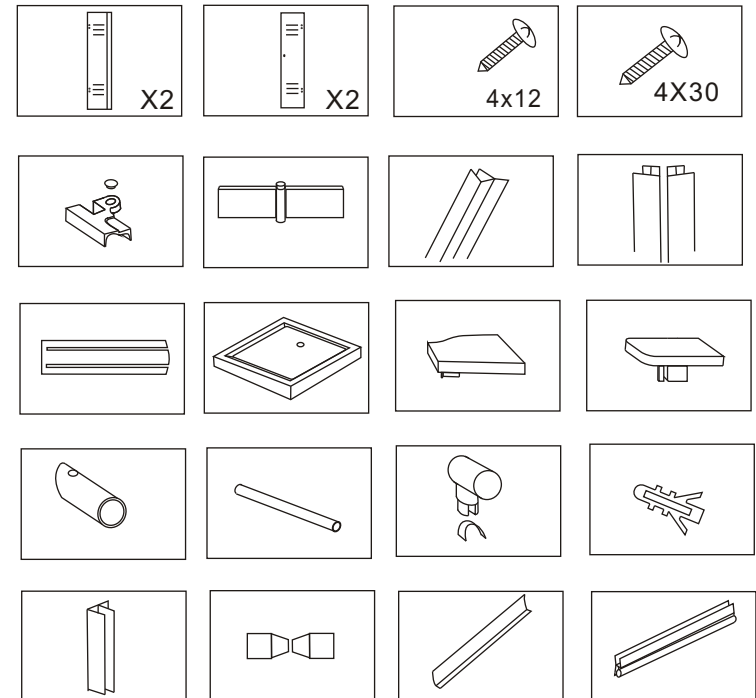


Inner hexagon spanner
(In the package)

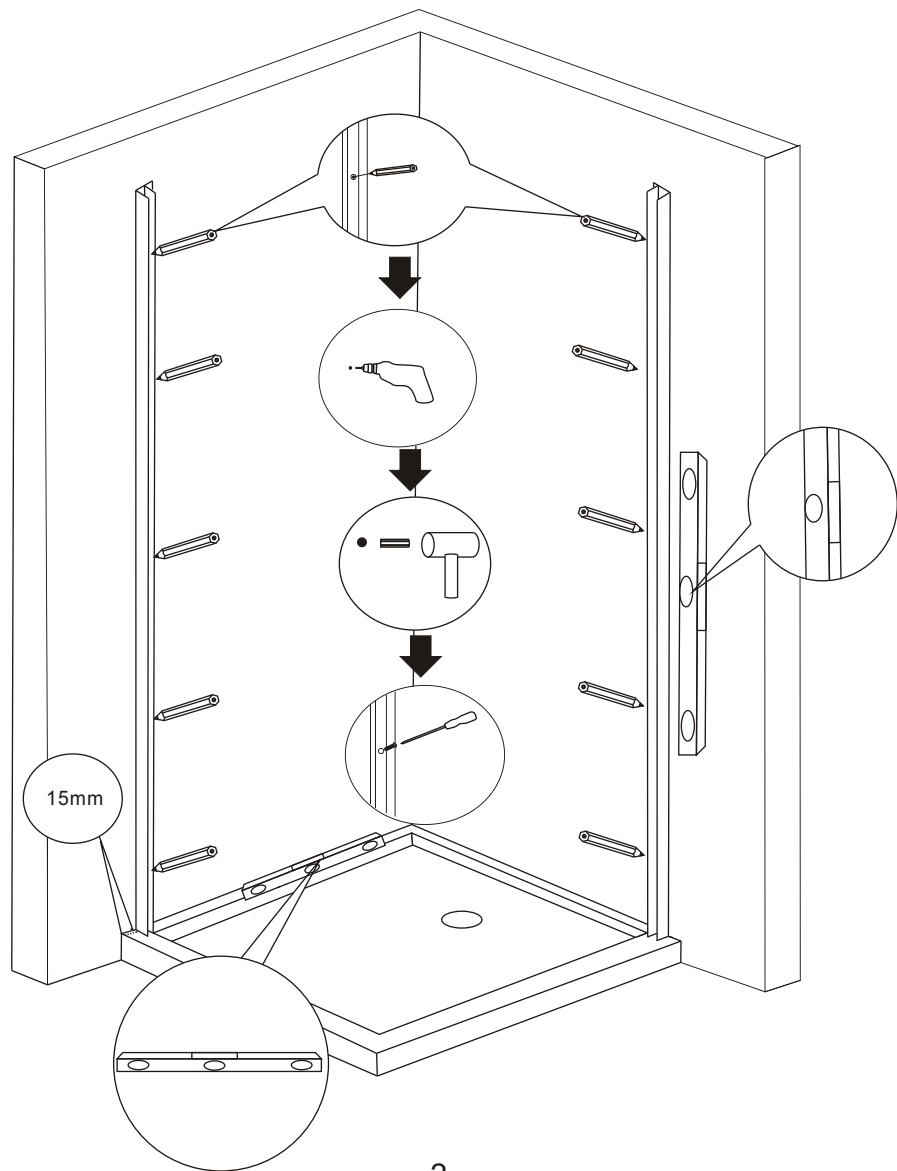
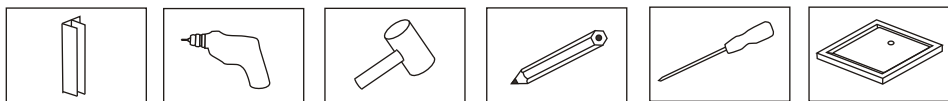
Silicon gel

Screw driver

Accessory list

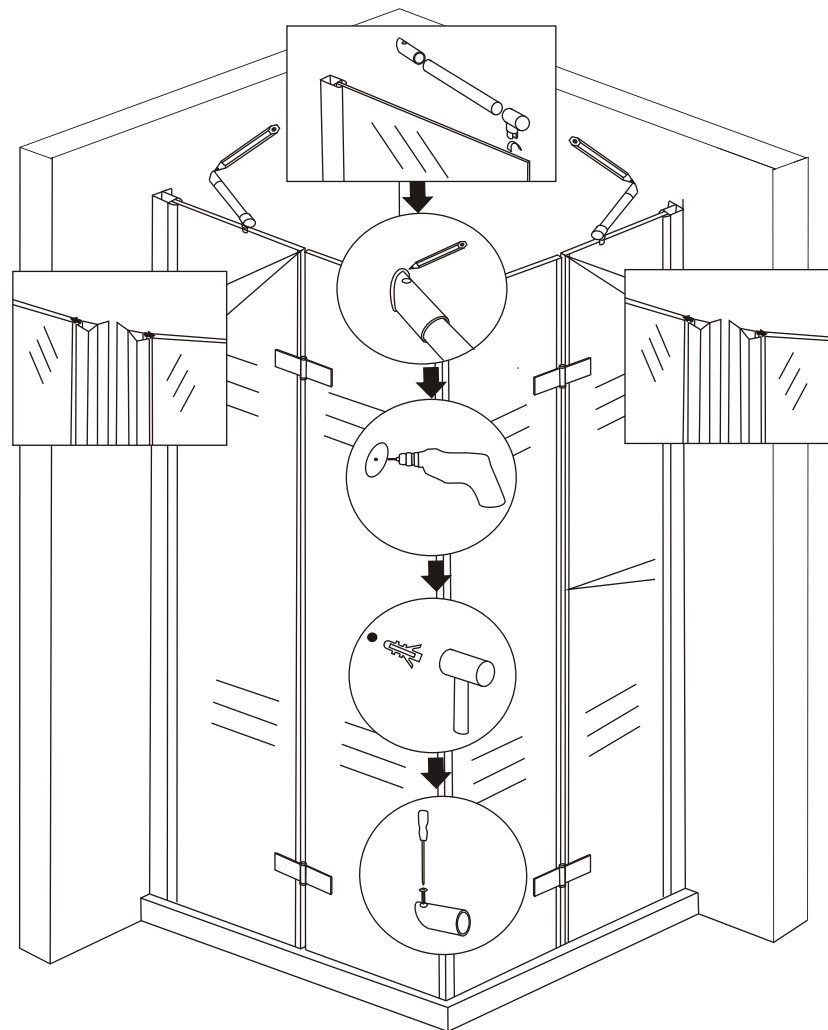
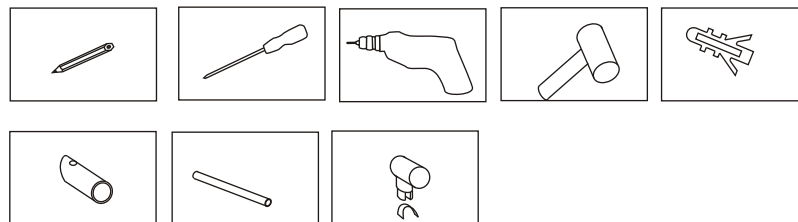


1. Put the shower tray on the floor and make it flat by ruler.
2. As picture shows, Make 15mm clearance between edge of the tray and aluminum profile.
3. Use pencil draw holes on the wall.
4. Use 6mm drill bit to make holes on the wall.
5. Insert expansion tube into the wall and screw the aluminum profile.



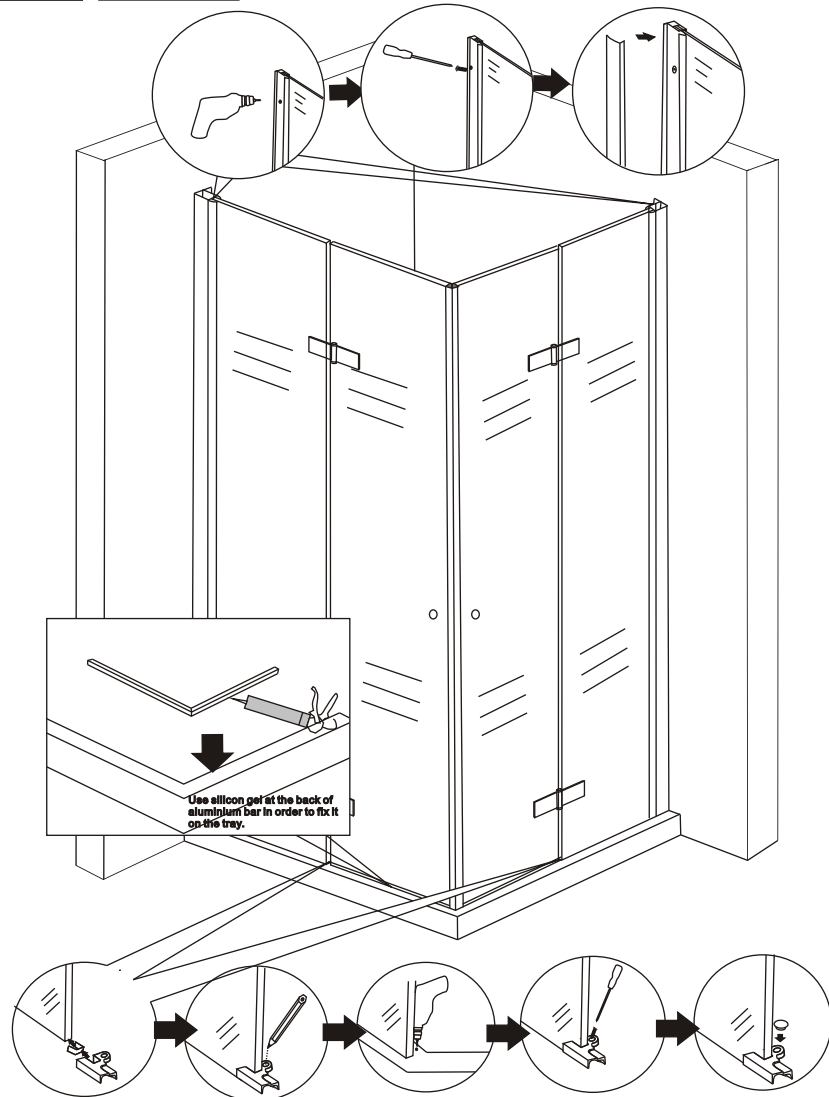
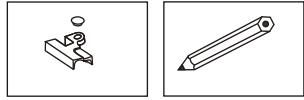
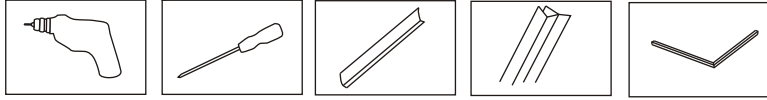
2

1. Install the support bar between the glass and wall as picture shows.
2. Install the gasket on both side of glass as picture shows.



7

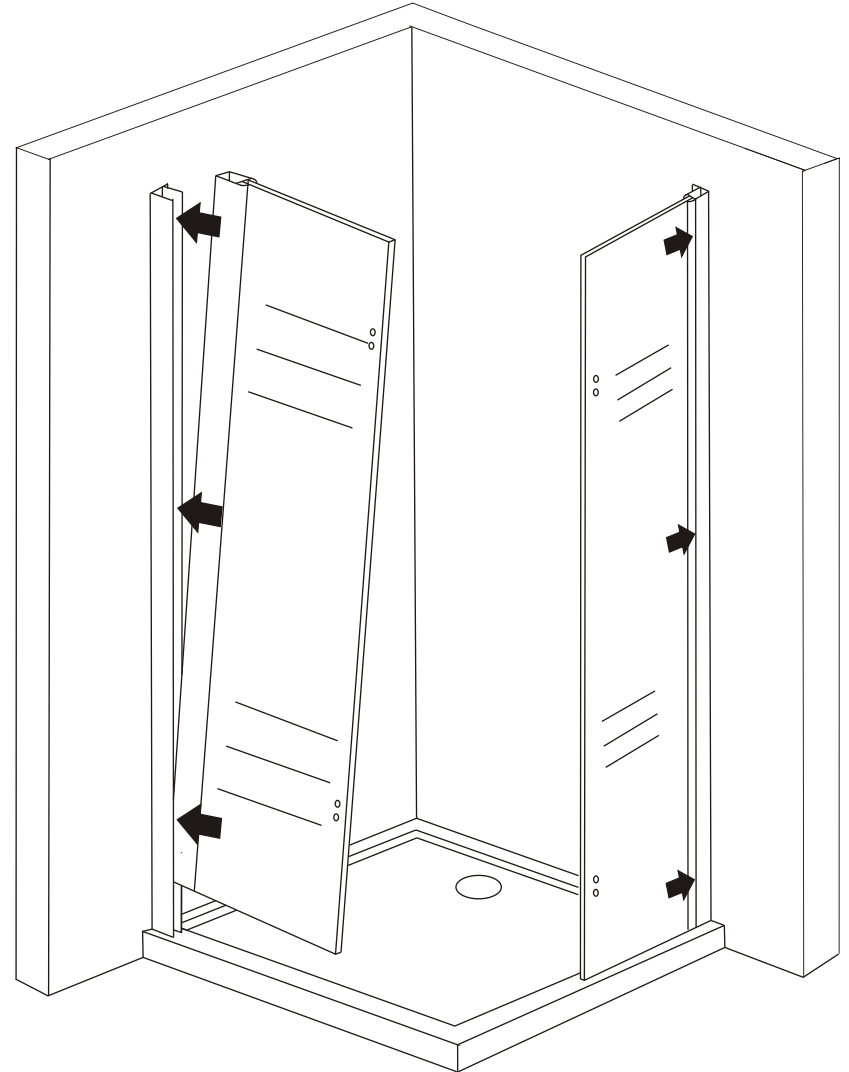
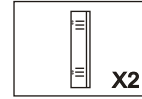
1. Drill hole and fix the wall aluminum profile and fixed glass aluminum profile together by screw, then insert the decorative aluminum profile as picture shows.
2. Install the plastic part and aluminum bar on the bottom of the door glass.
3. Use silicon gel on the back of aluminum bar.



Use silicon gel at the back of aluminum bar in order to fix it on the tray.

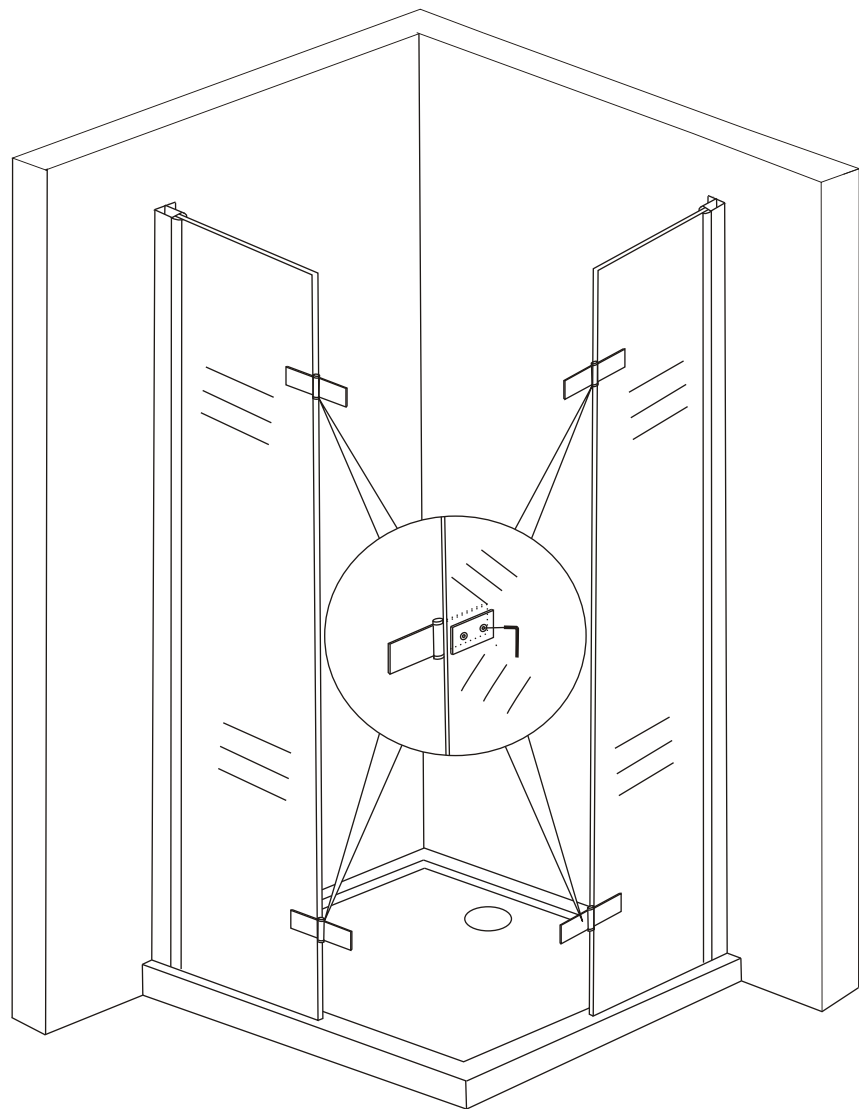
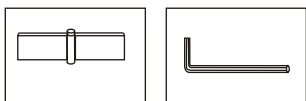
6

1. Insert the glass into the wall aluminum profile.



3

1. Install the hinge on the glass as picture shows.



1. Fix the door glass by hinge and install the magnetic gasket as picture shows.

