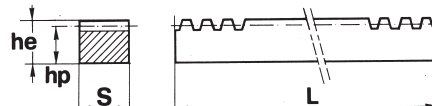
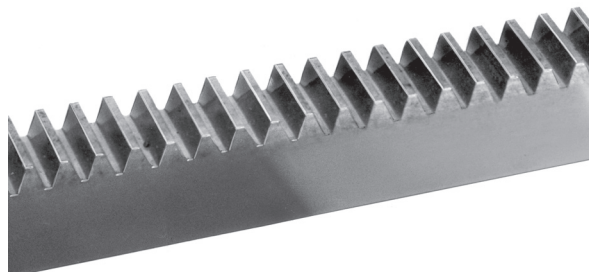
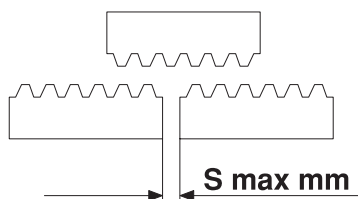


**Crema gliera intestata per montaggio continuo**  
**Spurgear racks suitable for continuous mounting**  
**Zahnstangen für fortlaufende Montage**  
**Cremailleres rabou tables pour montage en continue**  
**Crema lleras mecanizadas para montaje continuo**



Dentatura diritta	Straight toothing	Gerade Verzahnung	Denture droite	Dentado derecho
Angolo pressione 20°	Angle of pressure 20°	Eingriffswinkel 20°	Angle de pression 20°	Ángulo de presión 20°
Materiale C45E UNI EN 10083-1	Material C45E UNI EN 10083-1	Werkstoff C45E UNI EN 10083-1	Matière C45E UNI EN 10083-1	Material C45E UNI EN 10083-1

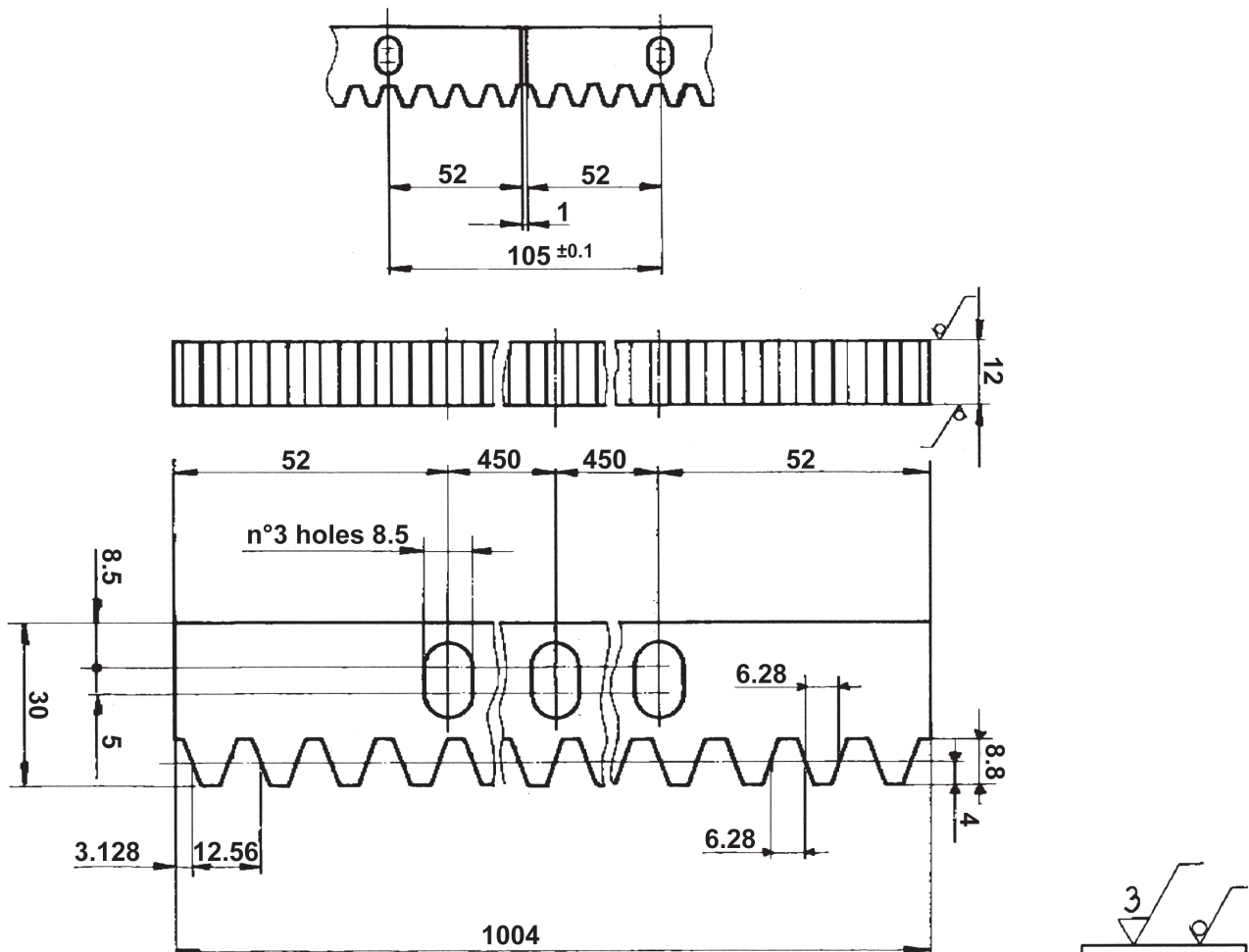
Mod.	hp	he x S	L							
			500		1000		2000		3000	
			Cod.	Kg	Cod.	Kg	Cod.	Kg	Cod.	Kg
1	14,0	15 x 15	CR 26050	0,820	CR 26100	1,500	CR 26200	3,100	CR 26300	4,900
1,5	15,5	17 x 17	CR 27050	1,000	CR 27100	2,000	CR 27200	4,000	CR 27300	6,100
2	18,0	20 x 20	CR 28050	1,400	CR 28100	2,700	CR 28200	5,400	CR 28300	8,400
2,5	22,5	25 x 25	CR 29050	2,100	CR 29100	4,300	CR 29200	8,600	CR 29300	11,900
3	27,0	30 x 30	CR 30050	3,100	CR 30100	6,300	CR 30200	12,500	CR 30300	18,600
4	18	22 x 22	CR 37050	1,400	CR 37100	3,250	CR 37200	6,800		
4	21,0	25 x 25	CR 36050	1,800	CR 36100	3,650	CR 36200	7,300	CR 36300	10,900
4	26,0	30 x 30	CR 33050	3,050	CR 33100	6,000	CR 33200	11,900	CR 33300	18,100
4	36,0	40 x 40	CR 31050	5,500	CR 31100	11,100	CR 31200	22,000	CR 31300	31,300
5	45,0	50 x 50	CR 32050	8,300	CR 32100	17,500	CR 32200	34,600	CR 32300	45,300
6	54	60 x 60	CR 34050	12,650	CR 34100	25,000	CR 34200	51,000		
8	72,0	80 x 80	CR 39050	22,400	CR 39100	45,000	CR 39200	90,000		



**Dati tecnici**      **Technical specifications**      **Technische Daten**      **Donnees techniques**      **Datos tecnicos**

Mod.	Passo / Pitch Teilung / Pas Paso	S	L							
			500		1000		2000		3000	
			Z	Lr	Z	Lr	Z	Lr	Z	Lr
1	3,1416	0,5	159	499,51	319	1002,17	637	2001,20	955	3000,23
1,5	4,7124	0,6	106	499,51	213	1003,74	425	2002,77	637	3001,80
2	6,2832	0,6	80	502,66	160	1005,31	319	2004,34	478	3003,37
2,5	7,8540	0,7	64	502,66	128	1005,31	255	2002,77	382	3000,23
3	9,4248	0,8	53	499,51	107	1008,45	213	2007,48	319	3006,51
4	12,5664	0,8	40	502,66	80	1005,31	160	2010,62	239	3003,37
5	15,7080	1,0	32	502,66	64	1005,31	128	2010,62	191	3000,23
6	18,8496	1,0	27	508,94	54	1017,88	107	2016,91		
8	25,1328	1,0	20	502,66	40	1005,31	80	2010,62		

**Cremagliera per cancelli, viti, rondelle e distanziali inclusi**  
**Racks for sliding gates, complete with screws washers and spacers**  
**Zahnstangen für Schiebetore, komplett mit Schrauben, Federringen und Distanzhaltern**  
**Crémaillères pour portails coulissants. Vis, rondelles et entretoises incluses**  
**Cremalleras para puertas correderas. Tornillos, arandelas y espaciadores incluidos**



Cod. CRE3012

Passo 12.566 mm	Pitch 12.566 mm	Teilung 12.566 mm	Pas 12.566 mm	Paso 12.566 mm
Modulo = 4	Module = 4	Modul = 4	Modul = 4	Modulo = 4
<b>Dentatura diritta</b>	<b>Straight toothing</b>	<b>Gerade Verzahnung</b>	<b>Denture droite</b>	<b>Dentado derecho</b>
<b>Angolo pressione 20°</b>	<b>Angle of pressure 20°</b>	<b>Eingriffswinkel 20°</b>	<b>Angle de pression 20°</b>	<b>Ángulo de presión 20°</b>
<b>Materiale</b> <b>C45E UNI EN 10083-1</b>	<b>Material</b> <b>C45E UNI EN 10083-1</b>	<b>Werkstoff</b> <b>C45E UNI EN 10083-1</b>	<b>Matière</b> <b>C45E UNI EN 10083-1</b>	<b>Material</b> <b>C45E UNI EN 10083-1</b>
Trattamento superficiale: Zincatura	Surface treatment: Zinc plating	Oberflächenbehandlung: Verzinken	Traitement de surface: Zingage	Tratamiento superficial: Cincado