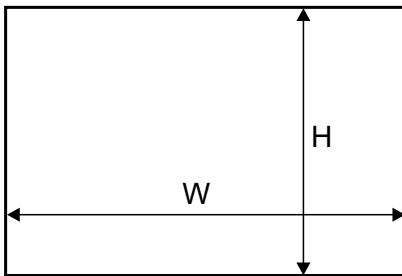


COMPONENTS

Handle Libra textile door stop, inserted 14.5mm x 4mm Length: 2.5 m, 2.7 m	Top track Simple 68 mm Length: 1.5 m, 2.0 m, 2.5 m, 3.0 m, 4.0 m, 6.0 m	Bottom track Simple 44 mm Length: 1.5 m, 2.0 m, 2.5 m, 3.0 m, 4.0 m, 6.0 m	Rubber finishing profile for bottom track Length: 2.0 m, 3.0 m, 6.0 m, 50.0 m	H31/18 Simple midrail Length: 3.0 m	H25/18 Simple midrail Length: 3.0 m
Top horizontal profile Simple-Frame Length: 1.5 m, 2.0 m, 2.5 m, 3.0 m	Bottom horizontal profile Simple-Frame Length: 1.5 m, 2.0 m, 2.5 m, 3.0 m	Guiding carriage Simple18 Frame 	Bottom carriage Simple 10 V 	Self-tapping screw Ø 6.3x32 	Fastening wedge for glass Simple-Frame

Dimensions of opening

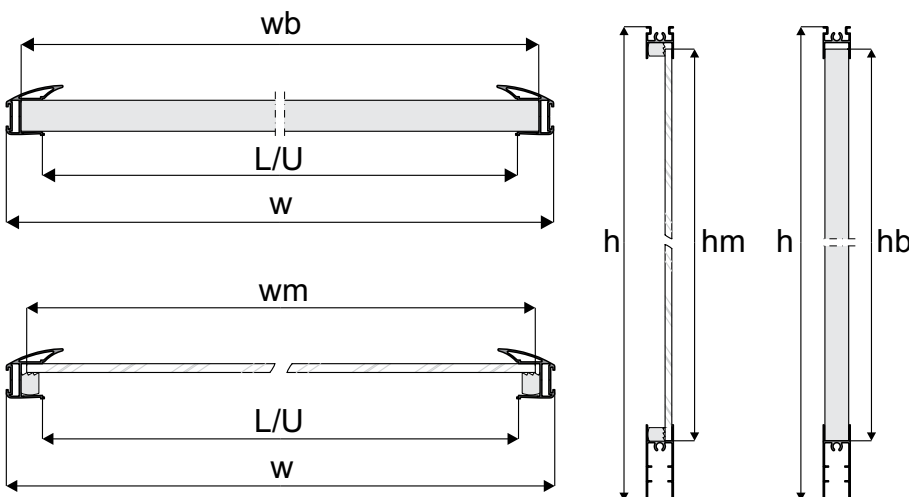


door filling - 18mm board

door height	- h	$h = H - 33 \text{ mm}$
board height	- hb	$hb = h - 61 \text{ mm}$
door width	- w	$w = (W - 3 \text{ mm} + Z) : N$
board width	- wb	$wb = w - 17 \text{ mm}$
horizontal profile length - L upper horizontal profile length - U		$L = U = w - 40.4 \text{ mm}$

number of doors	- N	2	3
total overlap	- Z	32 mm	64 mm

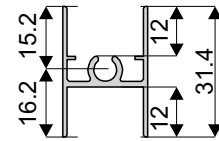
visual design - 4 wings	
	$w = (W + 93) : 4$
	$w = (W : 2 + 29) : 2$



door filling - 4mm glass or mirror

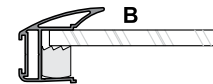
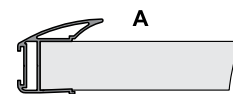
mirror height	- hm	$hm = hb$
mirror width	- wm	$wm = wb - 4 \text{ mm}$

Dimensions helpful during installation of horizontal mid-rails in Simple-Frame systems

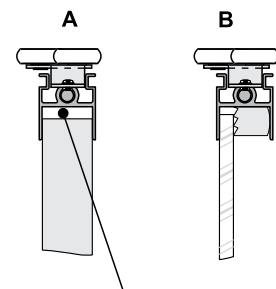


Installation method for fitting 18mm board (diag.A) and 4mm mirror or glass (diag.B)

- with handle

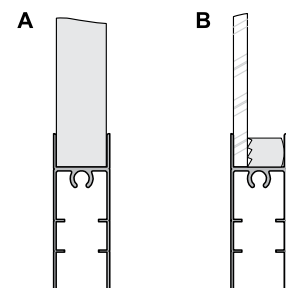


- with top horizontal profile



Expansion gap taken into account when calculating the height of chipboard

- with bottom horizontal profile



ATTENTION!

Mirror (4mm) should be used with a safety backing film. Safety glass (4.5mm) comprises of two thin layers with a film in-between.