

DS-2CD2732F-I(S)

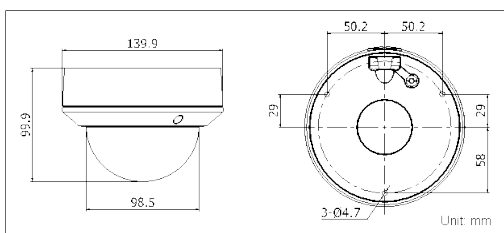
3.0MP VF IR Dome Network Camera



Key features

- 3 megapixel (2048 x 1536) high resolution
- Full HD1080p real-time video
- IR LEDs: up to 20m
- DWDR & 3D DNR & BLC
- Support onboard storage (up to 64GB)
- (-S) Audio I/O, Alarm I/O
- IP66
- Vandal-proof

Dimensions



Accessories



DS-1238ZJ
Pendant Mount
Aluminium Bracket



DS-1256ZJ
Wall Mount
Aluminium Bracket
with gang box



DS-1280ZJ-DM20
Wire Intake Box

DS-2CD2732F-I(S)	
Camera	
Image sensor	1/3" progressive scan CMOS
Min. illumination	0.095 lux@F1.4 0 lux with IR
Shutter time	1/30s ~ 1/100,000s
Lens	2.8 ~ 12mm @ F1.4, Angle of view: 98° ~ 30.5°
Lens mount	Φ14
Day & night	ICR
Digital noise reduction	3D DNR
Wide dynamic range	Digital WDR
Backlight compensation	
Angle adjustment	Pan: 0° ~ 360°, tile: 0° ~ 75°, rotation: 0° ~ 360°
Compression standard	
Video compression	H.264 / MJPEG
H.264 compression profile	Main profile
Bit rate	32 Kbps ~ 16 Mbps
Audio compression (-S)	G.711 / G.726
Audio bit rate (-S)	64Kbps (G.711) / 16Kbps (G.726)
Image	
Max. image resolution	2048 × 1536
Frame rate	60Hz: 15fps (2048 x 1536), 30fps (1920 × 1080), 30fps (1280 x 720)
Image settings	Saturation, brightness, contrast adjustable through client software or web browser
Network	
Network storage	NAS
Alarm trigger	Motion detection, tampering alarm, network disconnect, IP address conflict, storage full, storage error
Protocols	TCP/IP, HTTP, DHCP, DNS, DDNS, RTP, RTSP, PPPoE, SMTP, NTP, UPnP, ICMP, IGMP, SNMP, FTP, 802.1X, QoS, HTTPS
System compatibility	ONVIF, PSIA, CGI
General functionalities	Dual stream, user authentication, watermark
Interface	
Communication interface	1 RJ45 10M / 100M ethernet port
On-board storage	Built-in Micro SD/SDHC/SDXC card slot, up to 64 GB
General	
Operating conditions	-30 °C ~ 60 °C (-22 °F ~ 140 °F), humidity 95% or less (non-condensing)
Power supply	DC12V ± 10%, PoE (802.3af)
Power consumption	Max. 5.5W
Impact protection	IEC60068-2-75Eh, 50J; EN50102, up to IK10
Ingress protection level	IP66
IR range	Up to 20m
Dimensions	Φ 140 x 99.9 mm (Φ 5.51" x 3.94")
Weight	1000g

Available models

DS-2CD2732F-I, DS-2CD2732F-IS

* -S (special order): 1-ch audio I/O interface and 1-ch alarm I/O interface.