



# 450Mbps Wireless N Access Point

---

Easy Network Expansion  
with N450 Wi-Fi

TL-WA901ND



450Mbps 2.4GHz



Passive PoE



5dBi Antennas

# Highlights

## 450Mbps, the Best Choice on 2.4GHz

With the use of 3×3 MIMO intelligent antenna technology, TL-WA901ND reaches speeds of up to 450Mbps, the maximum speed available on 2.4GHz single band, working smoothly with almost any bandwidth intensive applications including VoIP, HD streaming, or online gaming, without any lag.

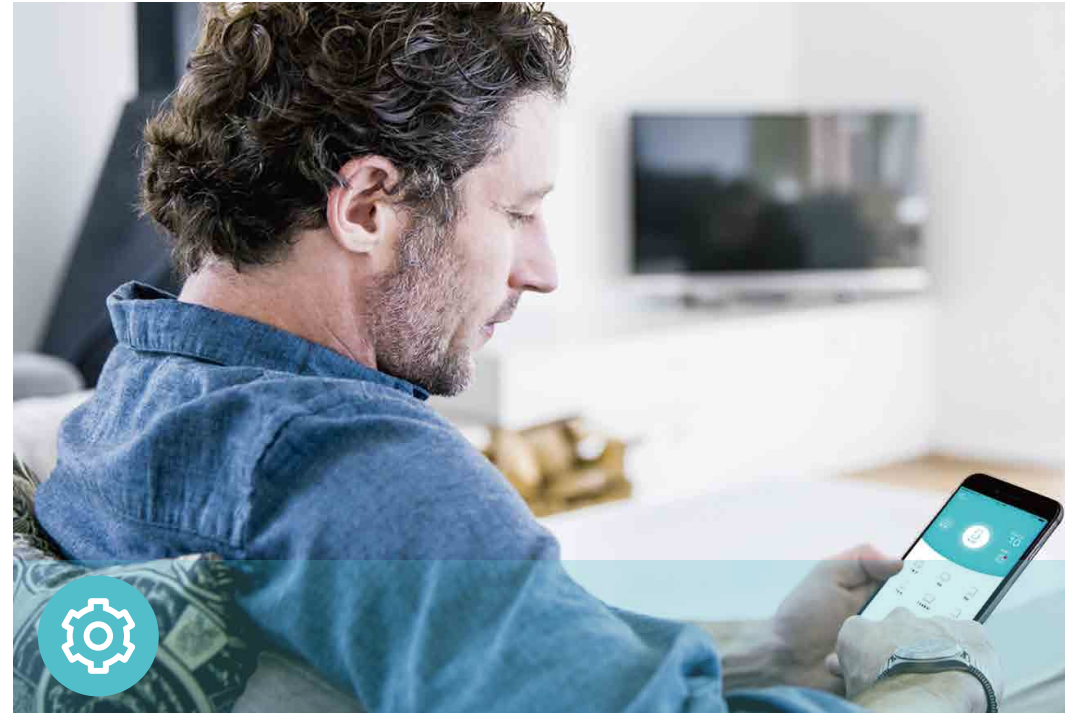


## Passive PoE Supported

TL-WA901ND is able to be powered using an Ethernet cable to simultaneously send data and electricity to wherever your AP may be located even up to 100 feet away. This feature multiplies your options allowing you to place the AP in a position that is most convenient to get the best signal possible, such as on a wall or on the ceiling of your office.



# Features



## Ease of Use

- Intuitive Web UI – Ensure quick and simple Installation without hassle
- Fast Encryption – One-touch WPA wireless security encryption with the WPS button
- Power On/Off – Conveniently power on or off your router as required



## Reliability

- Easy Bandwidth Management – Advanced QoS makes it easier for you to manage the bandwidth of connected devices



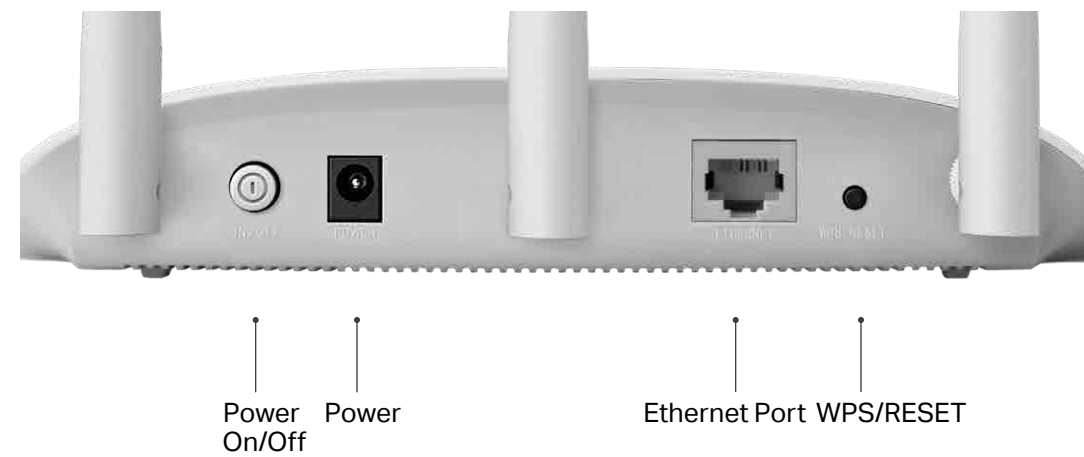
## Speed

- Ultimate Wireless Speed – Wireless speeds up to 450Mbps on 2.4GHz
- Fast Ethernet Port – Acts as a wireless adapter to connect wired devices

# Specifications

## Hardware

- Ethernet Port: 1 10/100Mbps Ethernet Port
- Buttons: Power On/Off Button, Reset/WPS Button
- Antennas: 3 Detachable Omni-Directional Antennas
- External Power Supply: 9VDC/0.85A
- Dimensions (W x D x H): 194.8×130×36.2mm



## Wireless

- Wireless Standards: IEEE 802.11b/g/n 2.4GHz
- Frequency: 2.4GHz
- Signal Rate: 450Mbps at 2.4GHz
- Transmit Power:  
CE: <20dBm; FCC: <28dBm
- Reception Sensitivity:  
11g 54M: -76dBm  
11n 20Mbps: -73dBm  
11n 40Mbps: -70dBm
- Wireless Function: Enable/Disable Wireless Radio, WDS Bridge, WMM, Wireless Statistics
- Wireless Security: 64/128-bit WEP, WPA/WPA2, WPA-PSK/WPA-PSK2 encryptions

# Specifications

## Software

- Quality of Service: WMM
- DHCP: Server, DHCP Client List, Address Reservation
- Wireless Modes: Access Point, Repeater, Bridge, Client, Multi-SSID
- Protocols: IPv4, IPv6
- System Tools: SNMP, Ping Watch Dog

## Others

- Certification:  
CE, FCC, RoHS
- System Requirements:  
Microsoft Windows 98SE/NT/2000/XP/Vista™/7/8/8.1/10, MAC OS, NetWare, UNIX or Linux  
  
Internet Explorer 11, Firefox 12.0, Chrome 20.0, Safari 4.0, or other Java-enabled browser  
  
Cable or DSL Modem  
  
Subscription with an Internet Service Provider (for Internet access)
- Environment:  
Operating Temperature: 0°C~40°C (32°F ~104°F)  
Storage Temperature: -40°C~70°C (-40°F ~158°F)  
Operating Humidity: 10%~90% non-condensing  
Storage Humidity: 5%~90% non-condensing
- Package Contents  
450Mbps Wireless N Access Point TL-WA901ND  
3 detachable antennas  
Power Supply Unit  
PoE Power Injector  
Ethernet Cable  
Quick Installation Guide



For more information, please visit

<http://www.tp-link.com/en/products/details/TL-WA901ND.html>

or scan the QR code left

Attention: This device may only be used indoors in all EU member states and EFTA countries.

Specifications are subject to change without notice. TP-Link is a registered trademark of TP-Link Technologies Co., Ltd. Other brands and product names are trademarks or registered trademarks of their respective holders. Copyright ©2017 TP-Link Technologies Co., Ltd. All rights reserved.

TP-Link Technologies Co., Ltd.

Building 24 (floors 1, 3, 4, 5) and 28 (floors 1-4) Central Science and Technology Park, Shennan Rd, Nanshan, Shenzhen, China

[www.tp-link.com](http://www.tp-link.com)

[www.tp-link.com](http://www.tp-link.com)

TP-Link 450Mbps Wireless N Access Point TL-WA901ND