

Product Compliance Declaration

The company **Fillamentum Manufacturing Czech s.r.o.** declares that the product **Fillamentum PLA Extrafill** (3D printing filament) is compliant with the Directive 2011/65/EU and subsequent amendments. It may be used for production of electrical and electronic equipment.

The material used for production is only the biopolymer material PLA (polylactic acid). No substances limited in the Directive were detected in the input material. The colour versions of the product are made from the mixture of primary material with masterbatches. The colours of filament compliant according to the Directive are listed in Table 1. The limited substances are specified in Table 2.

The production is based on the Good Manufacturing Practice according to the Commission Regulation (EC) No 2023/2006. During the production, no substances are added into the material. The company guarantees that all the products placed on the market are in accordance with the technical documentation and the basic product requirements.

The declaration is based on the present knowledge and experience of the material suppliers. According to the Directive 2011/65/EU, it is necessary to determine the concentration values of restricted substances on the final product.

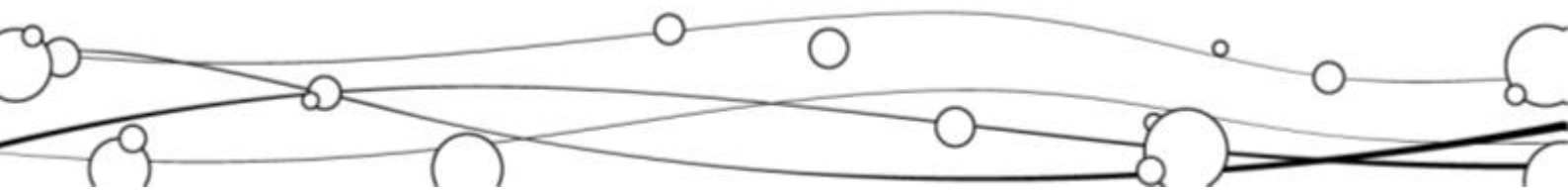


Table 1: List of products Fillamentum PLA Extrafill that comply with the Directive 2011/65/EU.

No.	Product name	RAL shade
1.	PLA Extrafill "Baby Blue"	
2.	PLA Extrafill "Chocolate Brown"	8017
3.	PLA Extrafill "Cobalt Blue"	5013
4.	PLA Extrafill "Concrete Grey"	7023
5.	PLA Extrafill "Electric Grey"	
6.	PLA Extrafill "Everybody's Magenta"	
7.	PLA Extrafill "Gold Happens"	
8.	PLA Extrafill "Green Grass"	6010
9.	PLA Extrafill "Iron Grey"	7011
10.	PLA Extrafill "Light Ivory"	1015
11.	PLA Extrafill "Lilac"	
12.	PLA Extrafill "Luminous Green"	6038
13.	PLA Extrafill "Luminous Orange"	2005
14.	PLA Extrafill "Luminous Yellow"	1026
15.	PLA Extrafill "Melon Yellow"	1028
16.	PLA Extrafill "Metallic Grey"	
17.	PLA Extrafill "Mint"	
18.	PLA Extrafill "Natural"	
19.	PLA Extrafill "Noble Blue"	
20.	PLA Extrafill "Orange Orange"	2008
21.	PLA Extrafill "Pearl Night Blue"	5026
22.	PLA Extrafill "Pearl Ruby Red"	3032
23.	PLA Extrafill "Purple Red"	3004
24.	PLA Extrafill "Rapunzel Silver"	
25.	PLA Extrafill "Signal Red"	3001
26.	PLA Extrafill "Sky Blue"	5015
27.	PLA Extrafill "Traffic Black"	9017
28.	PLA Extrafill "Traffic Purple"	4006
29.	PLA Extrafill "Traffic Red"	3020
30.	PLA Extrafill "Traffic White"	9016
31.	PLA Extrafill "Traffic Yellow"	1023
32.	PLA Extrafill "Turquoise Blue"	5018
33.	PLA Extrafill "Turquoise Green"	6016
34.	PLA Extrafill "Vertigo Galaxy"	
35.	PLA Extrafill "Vertigo Grey"	
36.	PLA Extrafill "Vertigo Starlight"	

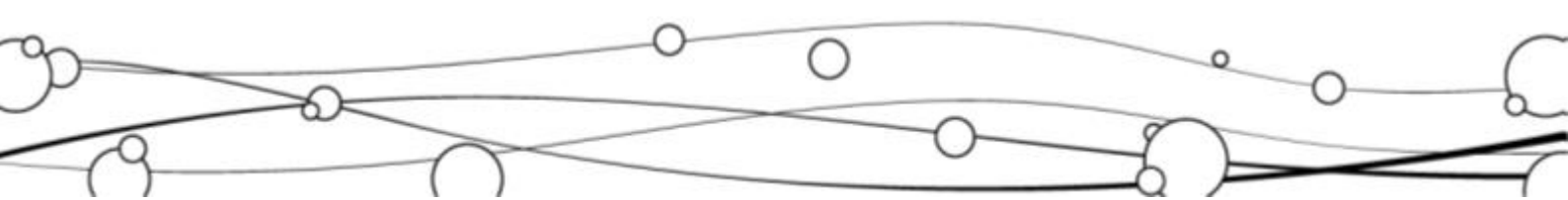


Table 2: List of substances restricted according to the Annex II of the Directive 2011/65/EU and the limits specified in input materials.

Substance name	Maximum concentration value	Concentration stated in input materials
Lead	0,1 %	< 0,1 %
Mercury	0,1 %	< 0,1 %
Cadmium	0,01 %	< 0,01 %
Hexavalent chromium	0,1 %	< 0,1 %
Polybrominated biphenyls (PBB)	0,1 %	< 0,1 %
Polybrominated diphenyl ethers (PBDE)	0,1 %	< 0,1 %
Bis(2-ethylhexyl) phthalate (DEHP)	0,1 %	< 0,1 %
Butyl benzyl phthalate (BBP)	0,1 %	< 0,1 %
Dibutyl phthalate (DBP)	0,1 %	< 0,1 %
Diisobutyl phthalate (DIBP)	0,1 %	< 0,1 %

