

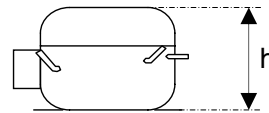
OPERATION:

Application:	L.B.P.	Max. Ambient Temp:	43°C
Refrigerant:	R600a	(1) Max. Steady Discharge Temp:	120°C
Operation:	Capillary	(1,2) Max. Peak Discharge Temp:	135°C
Cooling:	Static	Max. Steady Condensing Temp:	60°C
		(2) Max. Peak Condensing Temp:	70°C
		Max. Winding Temp:	130°C
		Max. Impurities:	30 mg
		Max.Total Compressor Water Content:	100 mg

COMPRESSOR:

Displacement:	7.52 cc	Oil Type:	Mineral
Bore:	23.6 mm	(4) Viscosity:	7 cSt
Stroke:	17.2 mm	Suction Muffler:	Semi-direct

(3) Net Wt:	7.8 kg
Case Size:	2 (h = 169.5 mm)
Oil Charge:	160 cc



ELECTRICAL:

Power Supply:	220 - 240V	Motor Type:	RSIR / RSCR *
Voltage Limits:	187 - 264V	Locked Rotor Current:	8.1 / 3.9 A**
Frequency:	50 Hz		
Phase:	1 ph		

Main Winding Resistance at 25°C:	23.6 Ω
Start Winding Resistance at 25°C:	30.7 Ω

* With Optional Run Capacitor

** Maximum current / Measured after 4 seconds

(1) Measured 5cm. from the shell with insulated thermocouples

(2) For transient conditions during 'Pull Down'

(3) Net weight is with oil but without electrics

(4) Measured at 40°C

For rated performance,

the suction line must be connected to the stub marked 'AS' on the attached drawing.

ELECTRICAL COMPONENTS:

ECC Starting Device: K 100-xx
 Starting Device: PTC- 8100
 (1) Starting Device: PTC - 7100DL
 PTC Resistance: 14 Ω

-xx Protector short code

Run Capacitor: 3.0 μF

<u>PROTECTORS:</u>	BDG ¾	Electrica ¾
Type	AE 25 FJ x	T 0700 / kk
Open °C	110 - 120 °C	110 - 120 °C
Close °C	71 - 53 °C	70 - 55 °C
U.T.C	1.00 A 70 °C	1.10 A 70 °C
Time Check Current	4.30 A	4.0 A
Max. Current	9.0 A	7.0 A
Code (if any)	F6	CD

	WANBAO
Type	B40 115 xx
Open °C	110 - 120 °C
Close °C	70 - 55 °C
U.T.C	1.1 A 70 °C
Time Check Current	4.0 A
Max. Current	7.0 A
Code (if any)	M1

Alt. protectors: AF 25 FJ x
 Code (if any) DL

*BDG 'x' Codes: 6 for terminal boards Mod.89,90
 8 for terminal board Mod.91*

*Electrica 'kk' Codes: 05 for terminal boards Mod.89,90
 07 for terminal board Mod.91*

(1) BDG protector AF type is for use with PTC-7100 only.



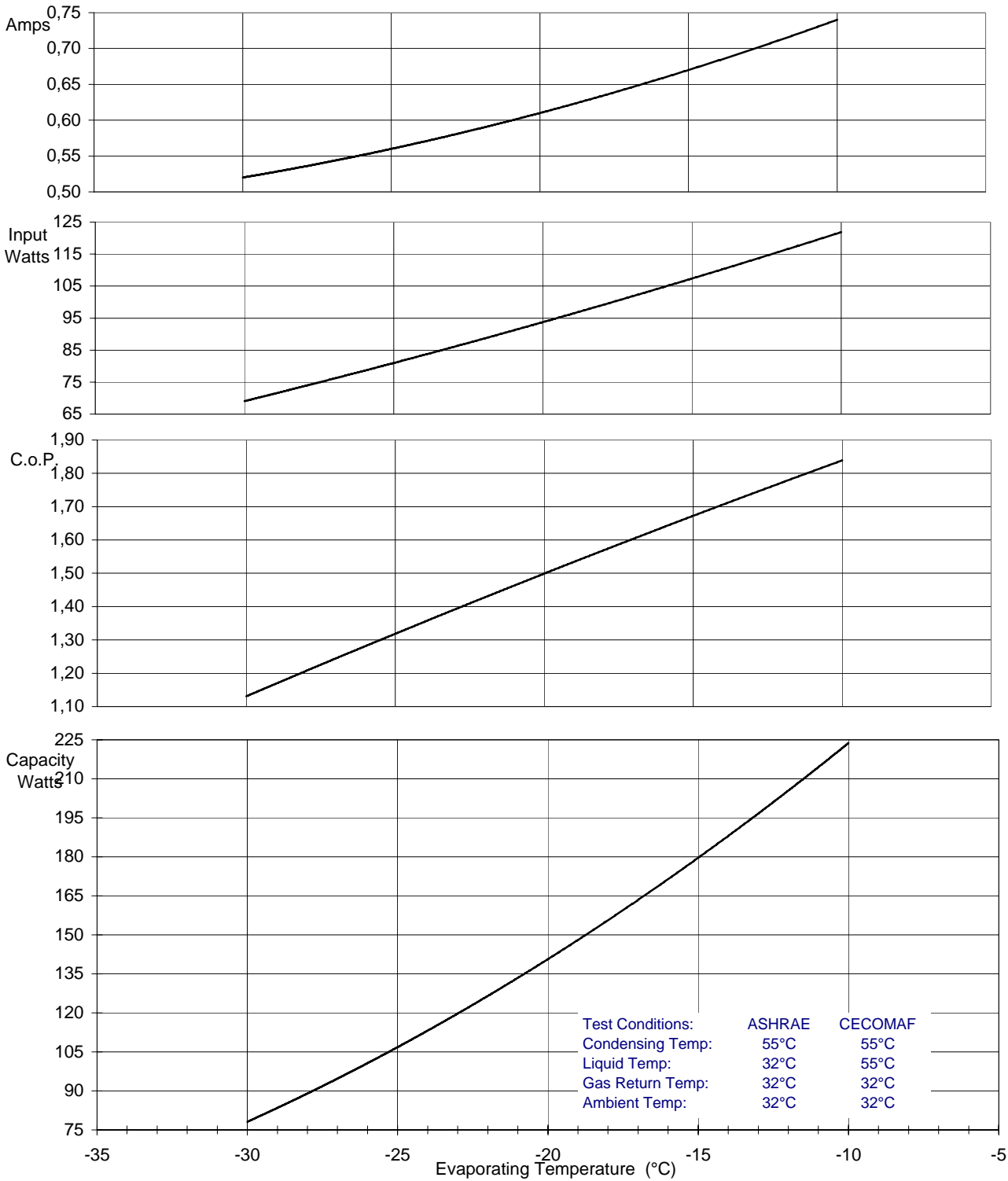
HVY75AA.02

PRODUCT SPECIFICATION

PERFORMANCE:

(Graphs are at ASHRAE conditions)

220V 50Hz Without run capacitor



	Evaporating Temperature °C	-30	-25	-23,3	-20	-15	-10	
<u>ASHRAE:</u>	Capacity	W	78	107	117	141	179	224
	C.o.P.	W / W	1,13	1,32	1,38	1,50	1,67	1,84
<u>CECOMAF:</u>	Capacity	W	64	88		116	147	184
	C.o.P.	W / W	0,93	1,09		1,23	1,37	1,51
	Input Power	W	69	81	85	94	107	122
	Current	A	0,52	0,56	0,58	0,61	0,67	0,74



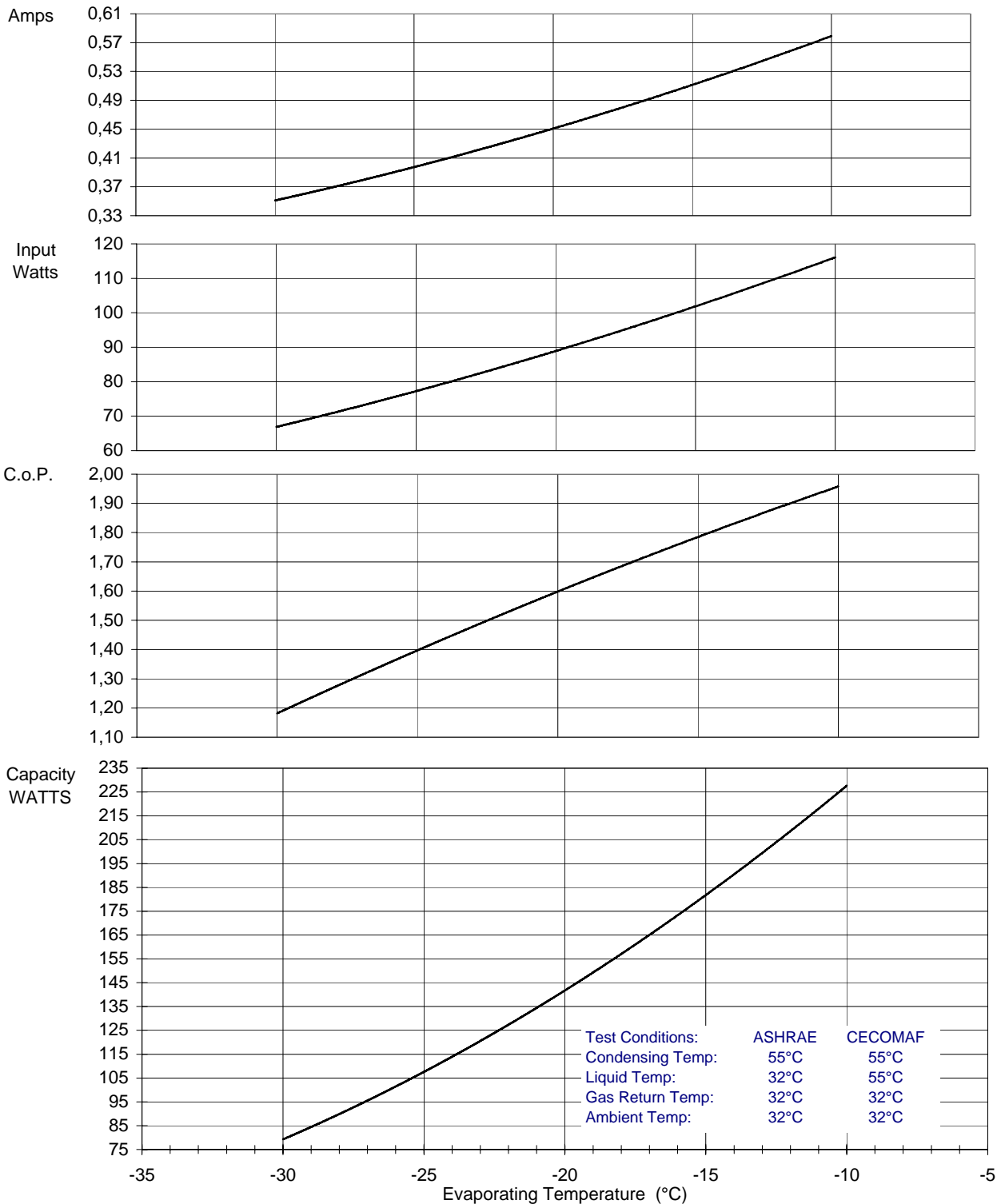
HVY75AA.02

PRODUCT SPECIFICATION

PERFORMANCE:

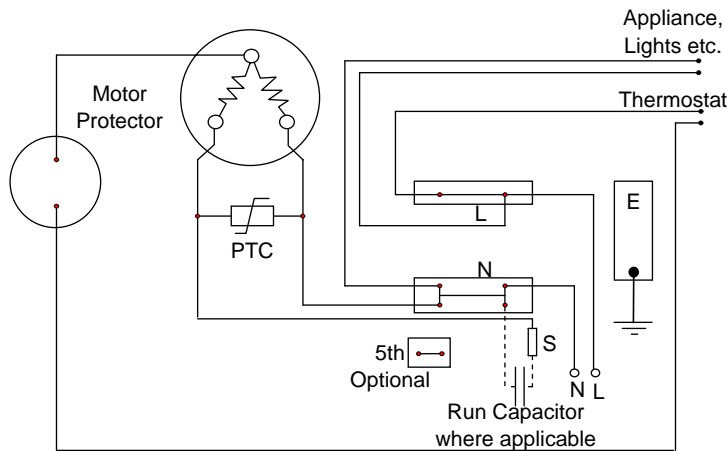
(Graphs are at ASHRAE conditions)

220V 50Hz With run capacitor

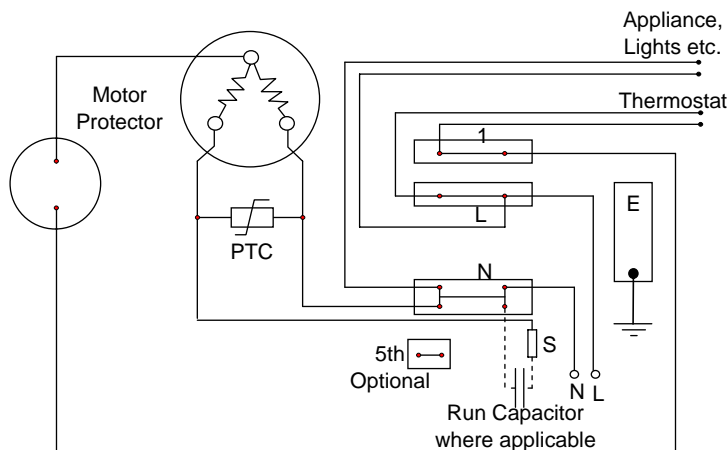


	Evaporating Temperature °C	-30	-25	-23,3	-20	-15	-10	
ASHRAE:	Capacity	W	79	108	119	142	181	228
	C.o.P.	W / W	1,18	1,40	1,47	1,60	1,78	1,96
CECOMAF:	Capacity	W	65	89		117	149	187
	C.o.P.	W / W	0,97	1,16		1,31	1,46	1,61
	Input Power	W	67	77	81	89	102	116
	Current	A	0,35	0,40	0,41	0,45	0,51	0,58

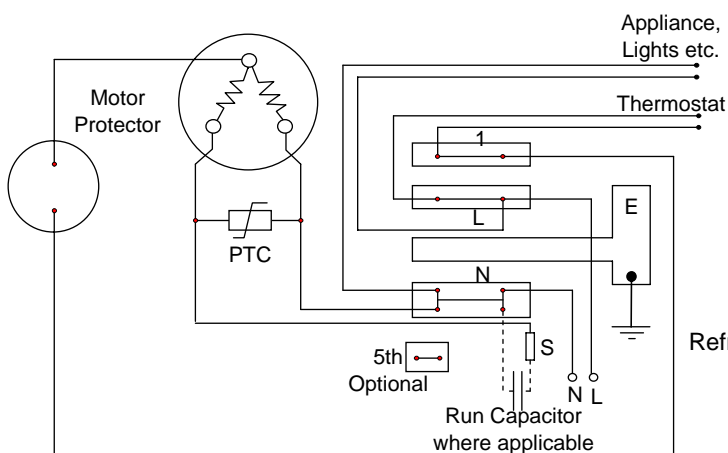
Circuit Diagram for ECC Terminal Board Standard Version



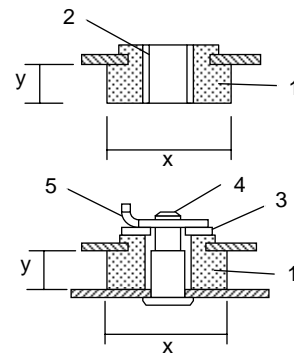
Circuit Diagram for ECC Terminal Board Frontal Version



Circuit Diagram for ECC Terminal Board Rast 5 Version



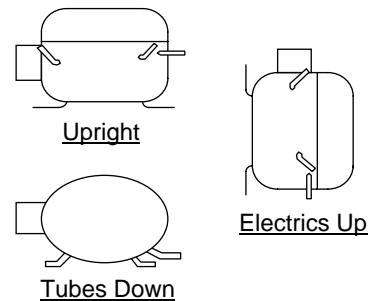
Mounting Accessories



x = 26mm or 28.5mm
y = 9mm or 10.3mm
Other sizes available

1. Rubber grommet
2. Sleeve
3. Washer
4. Steel pin
5. Clip

Recommended Transport Positions when fitted into appliances



Compressor Label

