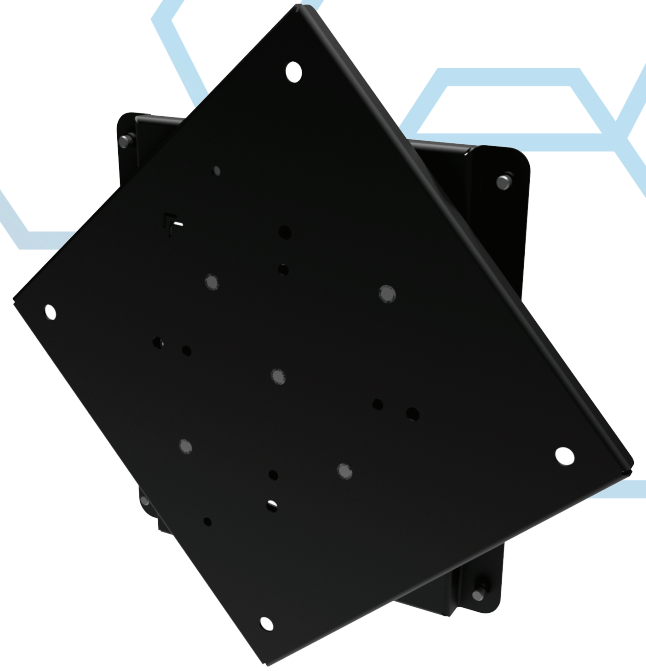


VWRA40

ROTATION ADAPTER

FOR VWPOP40



The VWRA40 is an adapter dedicated to the VWPOP40 mount. It provides multiple screen orientation options in configurations requiring precise screen alignment. Dedicated for screens up to 40" in portrait or landscape setup.

FEATURES

- The rotation position can be locked at 7 points every 15 degrees



PRODUCT SPECIFICATIONS

Short index	VWRA40
Category	Rotating Adapters
Product group	Accessories For Video Wall Mounts
Colour	Black
Warranty	Limited 5-years
Minimum screen size	27"
Maximum screen size	42"
Maximum load	25 kg
VESA Mounting Compatibility	75x75 up to 200x200



27"- 42"



75x75
200x200



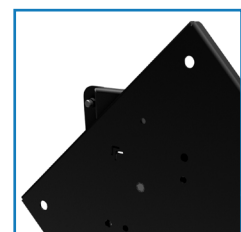
25 kg



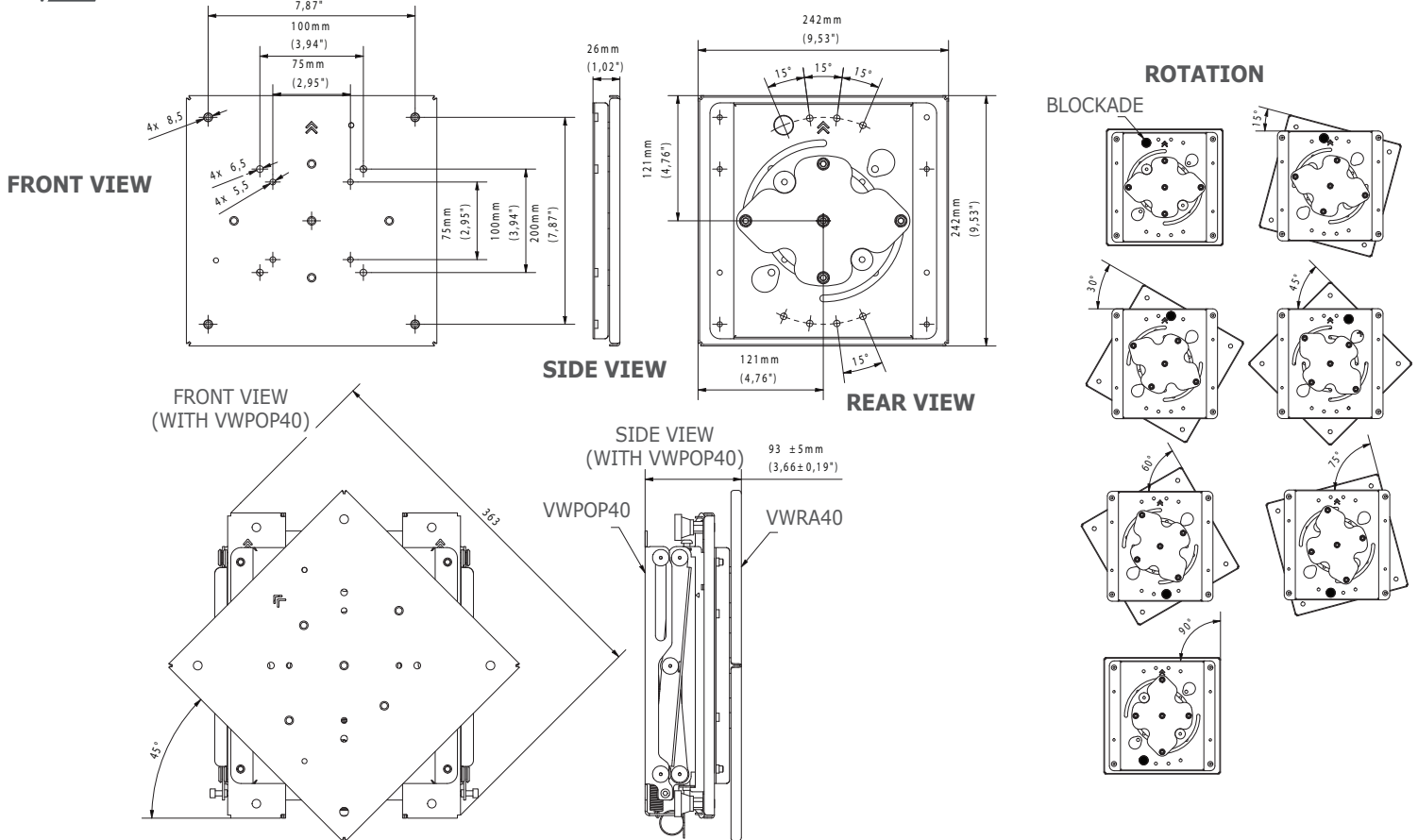
Securing the screen against falling with screws



Minimalistic design and functionality



Wide range of VESA mounting standards



TECHNICAL SPECIFICATIONS

Product dimensions	W: 242 mm D: 26 mm H: 242 mm (W:9,53" D:1,02" H:9,53")
Product weight	1,6 kg (4 lb)
Max. distance from the surface	26 mm (1,02")
Min. distance from the surface	26 mm (1,02")
Max. mounting pattern	200 mm x 200 mm
Min. mounting pattern	75 mm x 75 mm

LOGISTICS DATA

SAP INDEX	EAN CODE	COLOUR	PACKAGE DIMENSIONS	PACKAGE WEIGHT
WUSC-VWRA40	5902841133785	BLACK	275 x 280 x 45 mm 10,83 x 11,02 x 1,77"	1,8 kg 4 lb

HS Code (Harmonized System): 732690, HTS Code (Harmonized Tariff Schedule): 7326909890, Country of Origin: Poland

ACCESSORIES AND RELATED PRODUCTS



VWPOP40



VWRA65