

BOX BD 15/15 T6 2,2kW

GENERAL DATA



CENTRIFUGAL IN SOUNDPROOF CABINET

MANUFACTURING FEATURES:

- Impellers made of polyamide reinforced with fiberglass up to size 33/33 (12/12). Rest of models made of galvanized steel sheet.
- BD range fans assembled in soundproof cabinets with thermo-acoustic insulation, Bs1d0 fire class.
- Fan assembled on antivibration mountings.
- Connection gland included.
- Closed motors specially designed by Casals with extruded aluminum housing, which make the whole connection is protected within the integrated terminal box on the motor IP 65 protection and motor with IP54 protection and Class F insulation standard voltages: 230V 50Hz in single phase and 230/400V 50Hz three-phase.

APPLICATIONS:

Designed for inline installation, indoor or outdoor assembly, they are suitable for:

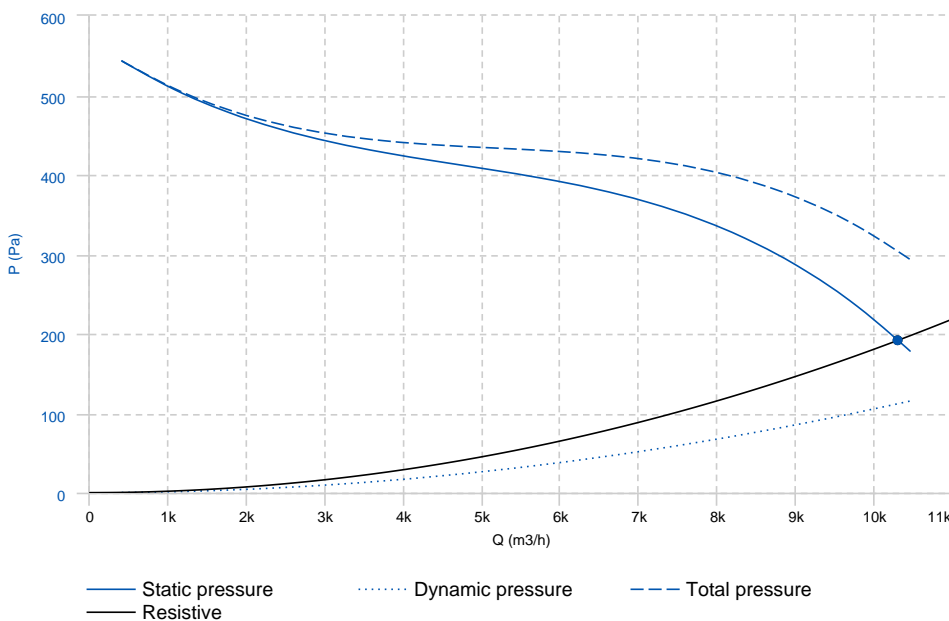
- Air renewal in buildings and industries.
- Industrial and professional kitchen hoods.
- Maximum working temperature: 50°C.

UNDER REQUEST:

- LG0 position.
- Impellers made of galvanised steel sheet.
- 3 speed fans.

PERFORMANCE CURVE

20°C 0m 1.2 Kg/m³



Design point	
Flow (m3/h)	10304.98
Pressure (Pa)	192.05
Service point	
T.max (°C)	50
Q (m3/h)	10298.5
Ps (Pa)	191.81
Pd (Pa)	111.96
Pt (Pa)	303.77
Speed (m/s)	13.66
Pabs (kW)	3.05

TECHNICAL DATA

Fan

RPM	900	Approx. weight	71 kg	Max. Flow	10450 m ³ /h
-----	-----	----------------	-------	-----------	-------------------------

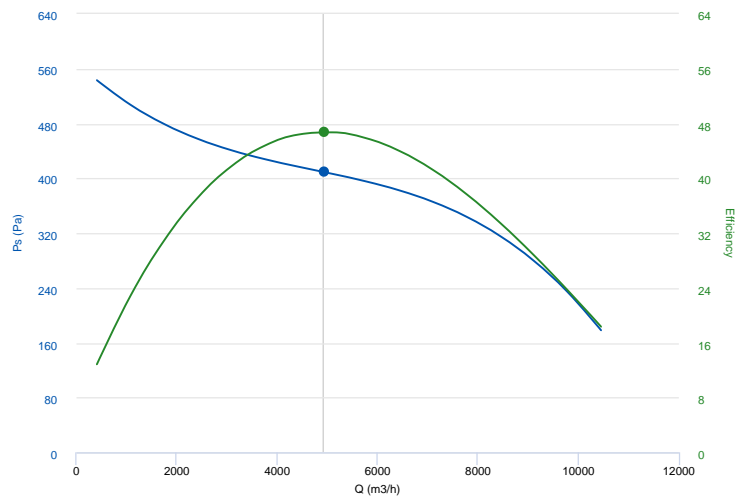
Motor

Power	2,2 kW	RPM	900	I max. (230V)	10,92 A	I max. (400V)	6,31 A
Size	STC100	Approx. weight	17 kg	Efficiency (%)	83.5 %		

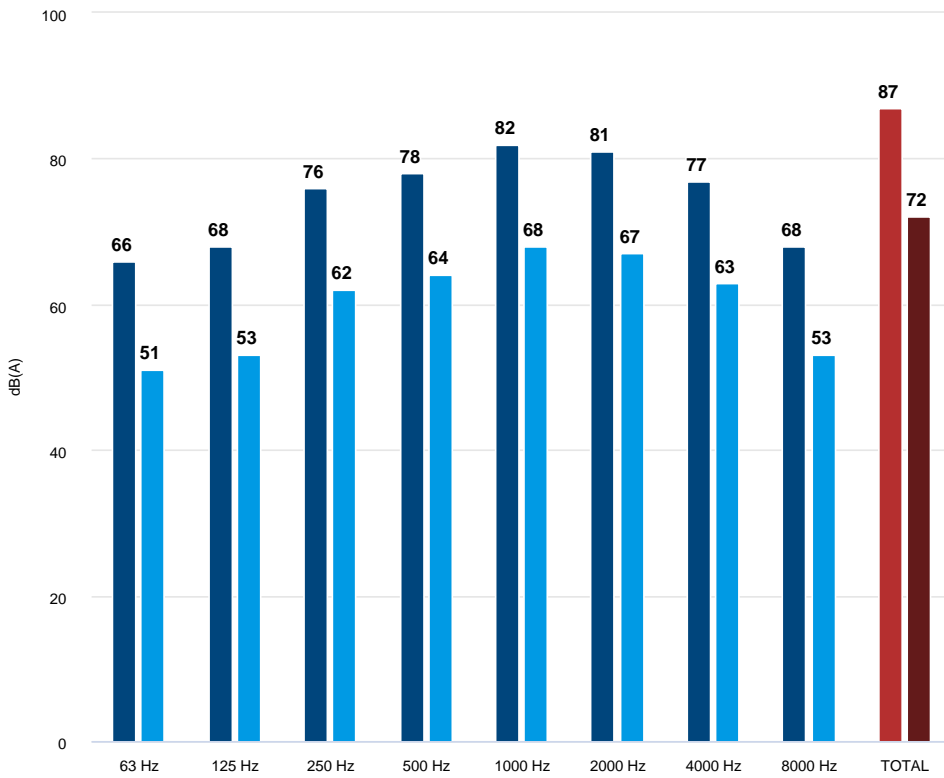
ERP DATA

Fan data sheet

Fan type	Unit for non-residential ventilation (LOT 6)	
Typology	Unidirectional	
reports.other	None	
Type of driver	None	
Motor power (kW)	2.2	
	Fan values	ERP Requirements 2018
Max. efficiency (%)	46.74	43.03
Effic. Heat recovery (%)	-	
Pabs (kW)	1.18	
reports.flow (m ³ /h)	4932.8	
Static pressure (Pa)	409.21	
Speed (m/s)	6.54	
SFP (W/m ³ /s)	861.45	



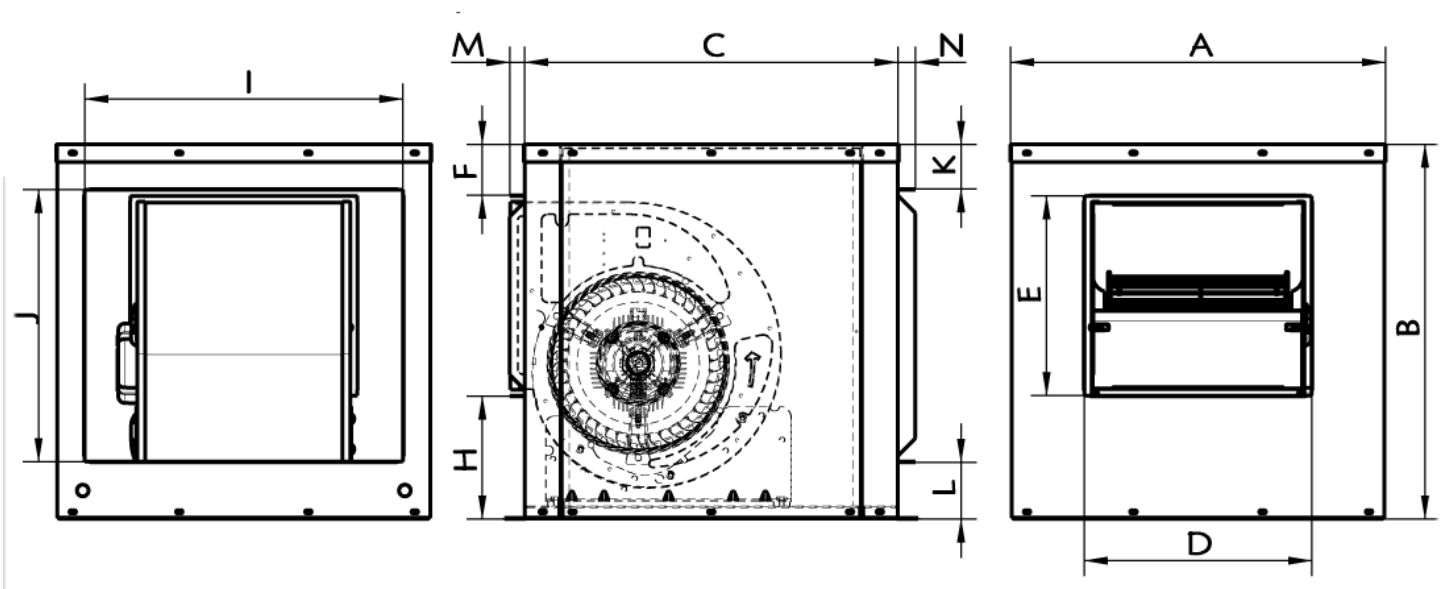
ACOUSTIC DATA



Sound power	
63 Hz	66
125 Hz	68
250 Hz	76
500 Hz	78
1000 Hz	82
2000 Hz	81
4000 Hz	77
8000 Hz	68
TOTAL	87

Sound pressure 1.5m (in)	
63 Hz	51
125 Hz	53
250 Hz	62
500 Hz	64
1000 Hz	68
2000 Hz	67
4000 Hz	63
8000 Hz	53
TOTAL	72

DIMENSIONS

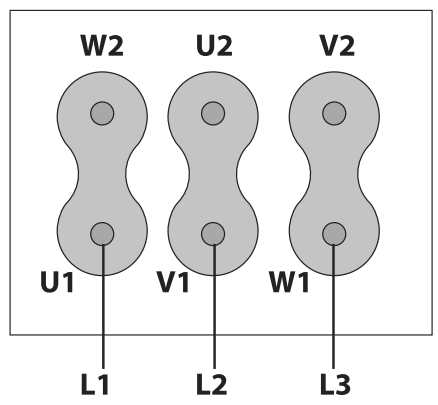


Dimensions (mm)

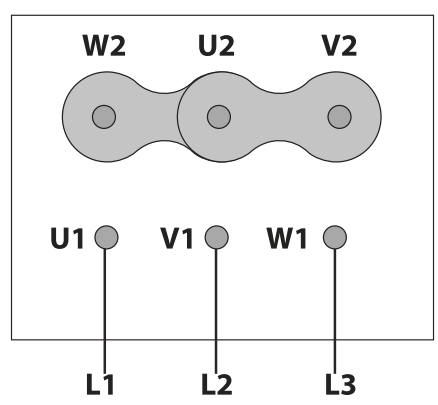
A	775	B	775	C	775	D	483	E	411
F	118	H	244	I	650	J	650	K	52
L	71	M	23	N	27				

WIRING DIAGRAM

230V 



400V 



ACCESSORIES



SAFETY SWITCH
INT 25 3P A
REF: INT253PA



INLET BLIND COVER
TCA 10
REF: 960001115



OUTDOOR FLANGE WITH BIRD GUARD
VIS OUT 15
REF: 960000053



OUTDOOR FLANGE WITH BIRD GUARD
VIS IN 15
REF: 960000060



RECTANGULAR-CIRCULAR FLANGE
BAC 16 (IN BOX BD/BV 15/15)
REF: 960002966

ANTI-VIBRATION



METALLIC GRAVITY SHUTTER FOR CABINET FANS. CERTIFIED 400°C/2H
PI 39/39 (15/15)
REF: 970390100



INLET/OUTLET ROUND COVER
TIAC 5 (OUT)
REF: 960001355



INLET/OUTLET ROUND COVER
TIAC 16 (IN)
REF: 960001366



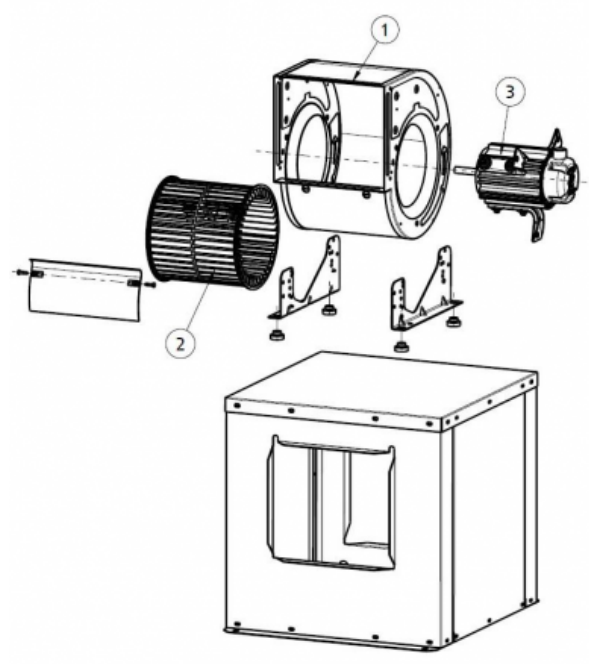
RECTANGULAR-CIRCULAR FLANGE
BAC 5 (OUT 15/15)
REF: 960002955

ANTI-VIBRATION



FREQUENCY SPEED CONTROLLER
SFC 400 III 8A *
REF: SFC400III8

SPARE PARTS



	Code	Model	RPM	Degrees
2	252379382	1 x TURBINE BD 15/15	-	-
3	252379476	1 x MOTOR+SUPPORTS BD39T6-3 M/C	-	-
3	721081261	1 x MOTOR BD T6 2,2kW 230/400V	-	-