

# HC 56 T4 (A5:6) 1,5kW 45°

## GENERAL DATA



SHORT CASED VARIABLE PITCH BLADES FAN

**MANUFACTURING FEATURES:**

- Plate axial fan with circular reinforced frame.
- Motor-impeller modular assembly for complete versatility.
- Polyester powder finishing coat.
- Standard asynchronous squirrel-cage motor with IP-55 protection and Class F insulation. Manufactured with standard voltages: 230V 50Hz in single phase motors and 230/400V 50Hz in three phase motors up to 4kW and 400/690V 50Hz for higher powers.
- HC: Polypropylene impeller (A2 profile) or polyamide impeller reinforced with fibreglass (other profiles) with variable pitch angle.
- HCA: Cast aluminum impeller with variable pitch angle.

**APPLICATIONS:**

Designed for wall or duct installation, they are suitable for:

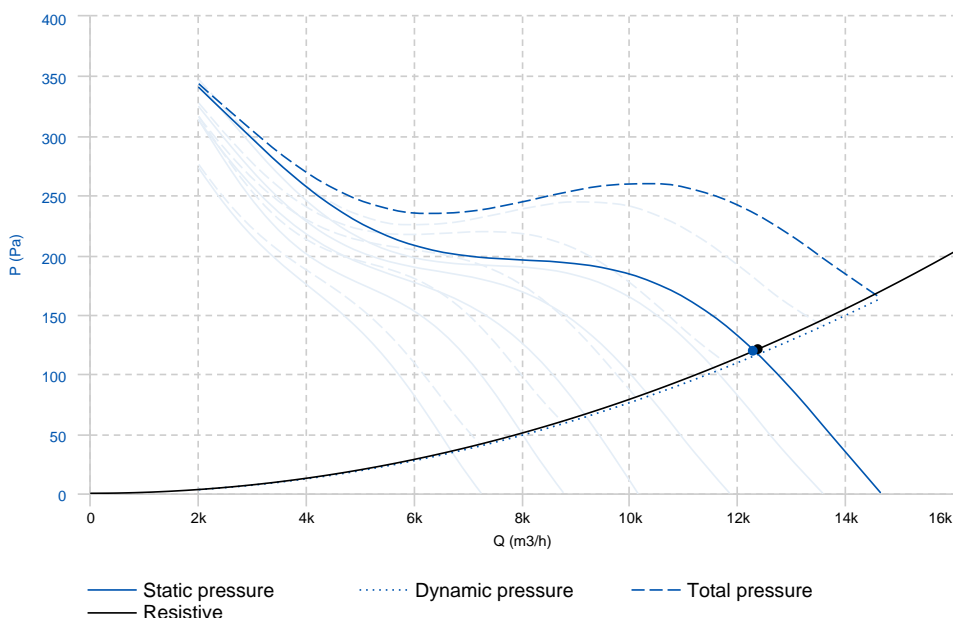
- Air renewal in buildings and industries.
- Smoke exhaust (maximum 50-60°C).
- Maximum working temperature: 50°C single phase, 60°C three phase.

**UNDER REQUEST:**

- Supply impeller (air direction from impeller to motor), 100% reversible impeller.
- 60Hz fans and special voltages.
- Hot-dipped galvanized or stainless steel housing.
- Optional can be adapted an square plate to the frame, to transform it in an axial square frame version fan.

## PERFORMANCE CURVE

20°C 0m 1.2 Kg/m<sup>3</sup>



Design point	
Flow (m3/h)	12379.1
Pressure (Pa)	121.27
Service point	
Angle	45
T.max (°C)	60
Q (m3/h)	12292.69
Ps (Pa)	119.58
Pd (Pa)	115.29
Pt (Pa)	234.87
Speed (m/s)	13.86
Security coefficient	1.21
Fan total efficiency	54.761
Efficiency (%)	63.82
Pabs (kW)	1.44
Pwmec (kW)	1.24
Precom (kW)	1,5

## TECHNICAL DATA

### Fan

RPM	Approx. weight	44.3 kg	Max. Flow	14640 m3/h
-----	----------------	---------	-----------	------------

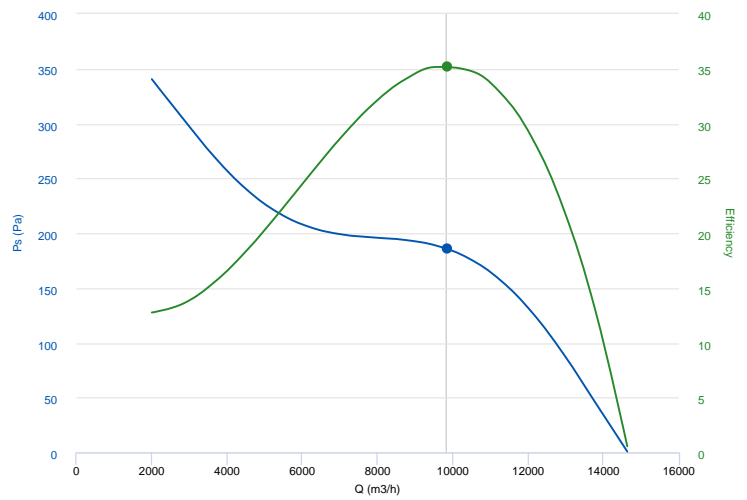
### Motor

Power	1,5 kW	RPM	1450	I max. (230V)	5,67 A	I max. (400V)	3,26 A
Size	90L	Approx. weight	22 kg	Efficiency (%)	83 %	FP	0.8

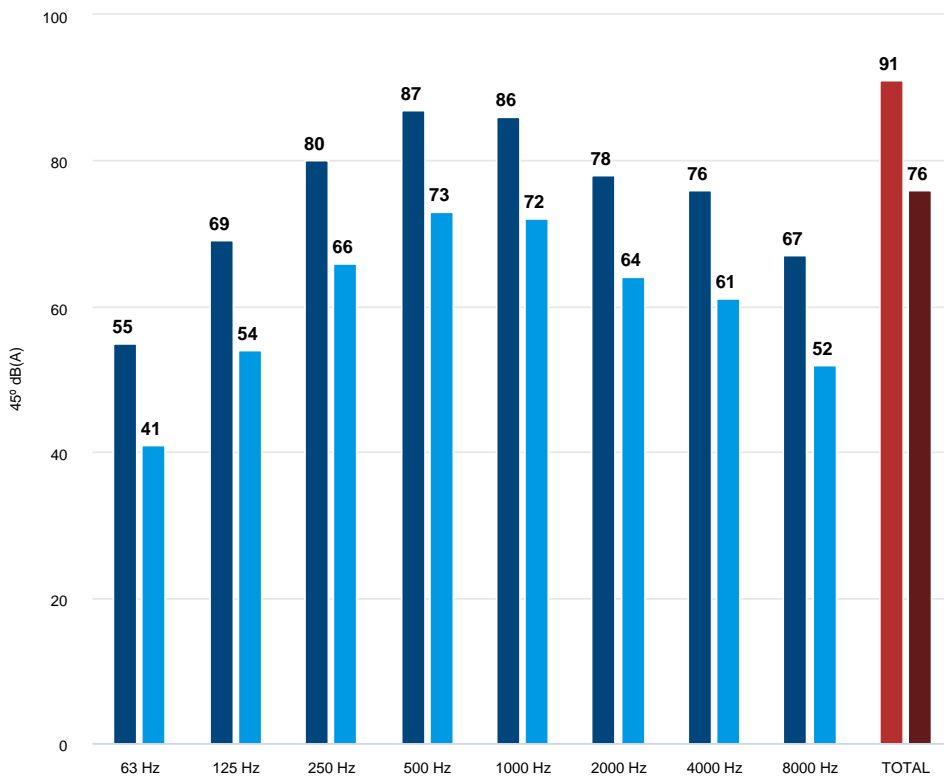
## ERP DATA

### Fan data sheet

Fan type	Axial fan	
Installation category	A: Outlet and Inlet free discharge	
Efficiency category	Static	
The fan has to be installed with VF	No	
Motor power (kW)	1.5	
	Fan values	ERP Requirements 2015
Max. efficiency (%)	35.23	34.64
Efficiency grade (N)	40.59	40
Pabs (kW)	1.425	
reports.flow (m3/h)	9839.96	
Static pressure (Pa)	185.64	
Speed (m/s)		
Specific ratio	1.00	



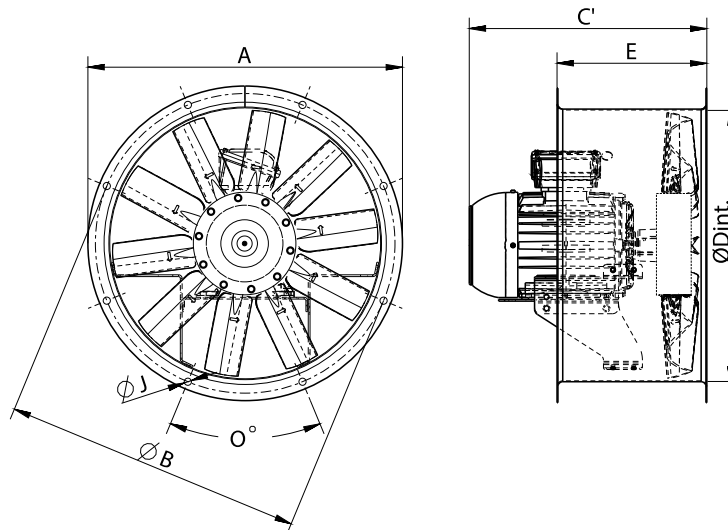
## ACOUSTIC DATA



Sound power	
63 Hz	55
125 Hz	69
250 Hz	80
500 Hz	87
1000 Hz	86
2000 Hz	78
4000 Hz	76
8000 Hz	67
TOTAL	91

Sound pressure 1.5m (in)	
63 Hz	41
125 Hz	54
250 Hz	66
500 Hz	73
1000 Hz	72
2000 Hz	64
4000 Hz	61
8000 Hz	52
TOTAL	76

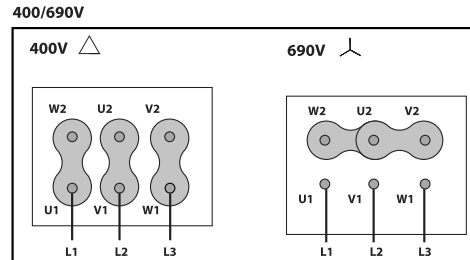
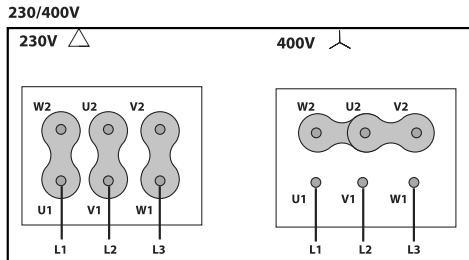
## DIMENSIONS



Dimensions (mm)

C' (Mot.T.71)	348	C' (Mot.T.80)	362	C' (Mot.T.90L)	397	C' (Mot.T.90S)	372	C' (Mot.T.100L)	433
E	250	O	12X30°	ØA	646	ØB	620	ØD	559
ØJ	12								

## WIRING DIAGRAM



## ACCESSORIES



**PROTECTION GUARD FOR LONG CASED AXIAL FANS**  
**RP 56**  
**REF: 960330100**



**CASED FANS MOUNTING SUPPORT**  
**PO 56**  
**REF: 960001657**



**CONNECTION FLANGE**  
**AC 560**  
**REF: 960003215**



**ANTI-VIBRATING FLANGE 400<sup>o</sup>/2H**  
**BA-400 56**  
**REF: 960002056**



**ANTI-VIBRATION JOINT**  
**JE 45**  
**REF: 300719201**



**SILENCIADOR CIRCULAR**  
**SIL-C 560/560**  
**REF: 960056056**



**SILENCIADOR CIRCULAR**  
**SIL-C 560/840**  
**REF: 960056084**



**SILENCIADOR CIRCULAR**  
**SIL-C 560/1120**  
**REF: 960056112**



**SILENCIADOR CIRCULAR**  
**SIL-CN 560/560**  
**REF: 961056056**



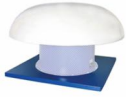
**SILENCIADOR CIRCULAR**  
**SIL-CN 560/840**  
**REF: 961056084**



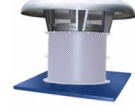
**SILENCIADOR CIRCULAR  
SIL-CN 560/1120  
REF: 961056112**



**CIRCULAR-CIRCULAR ANTI-VIBRATION FLANGE  
BAD 14  
REF: 960003464**



**ROOF KIT FOR CASED FANS  
KIT TE 56  
REF: KTE56**



**METALLIC ROOF KIT FOR CASED FANS  
KIT TM 56  
REF: KTM56**



**FREQUENCY SPEED CONTROLLER  
SFC (GENERIC)**



**SAFETY SWITCH  
INT (GENERIC)**



**ANTI-VIBRATION RUBBER BLOCK  
AVR (GENERIC)**



**ANTI-VIBRATION SPRING BLOCK  
AVS (GENERIC)**



**INLET PROTECTION GUARD FOR AXIAL FANS  
RP1 (GENERIC)**