

## JFC 315 T2 UN F400

### GENERAL DATA

CIRCULAR AXIAL JET FAN 400°C/2h

MANUFACTURING FEATURES:

The JFC F400 models are composed of an axial fan and two silencers.

FAN:

- Axial fan with reinforced tubular casing, made of steel sheet. The connection box is accessible by the side from a removable door.
- Standard asynchronous squirrel-cage motor with IP-55 protection and Class H insulation, CERTIFIED 400°C/2h. Standard voltages 230/400V 50Hz) for 1 speed motors and 400V 50Hz for 2 speed motors.

SILENCERS:

- Casing in galvanized steel. Inner duct made of perforated galvanized steel sheet.
- The silencers are filled with mineral wool with high acoustic absorption properties, preventing most of the fan noise to be propagated.
- Unidirectional JFC F400 UN is equipped with a protection guard at the inlet side and a deflector at the outlet. The deflector directs the air away from the ceiling and obstacles like beams or ducting, sweeping the whole volume of air to the closest extraction point.
- Reversible JFC F400 RE is equipped with a protection guards on both sides.

APPLICATIONS:

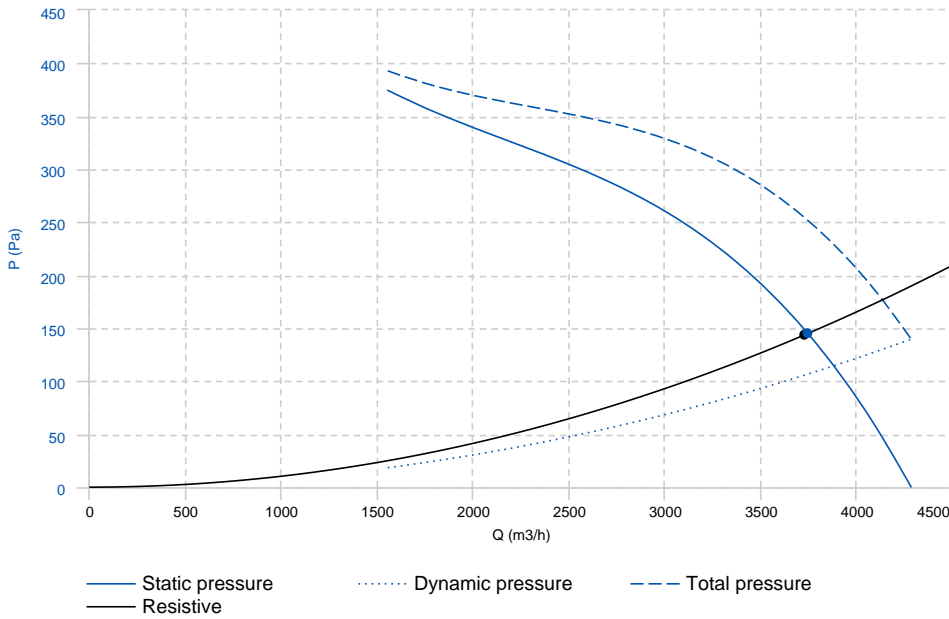
- Conceived for car parkings and large spaces where polluted air, or smoke from an accidental fire, needs to be removed effectively.
- An optimized design minimizes the height needed for their installation and assures a silent operation.
- Maximum working temperature: 60°C.

Official homologation by the European laboratory APPLUS according to EN 12101-3:2015  
Certification Nr: 0370-CPD-1325



## PERFORMANCE CURVE

20°C 0m 1.2 Kg/m<sup>3</sup>



Design point	
Flow (m <sup>3</sup> /h)	3729.04
Pressure (Pa)	144.04
Service point	
T.max (°C)	50
Q (m <sup>3</sup> /h)	3741.77
Ps (Pa)	145.03
Pd (Pa)	106.69
Pt (Pa)	251.72
Speed (m/s)	13.34

## TECHNICAL DATA

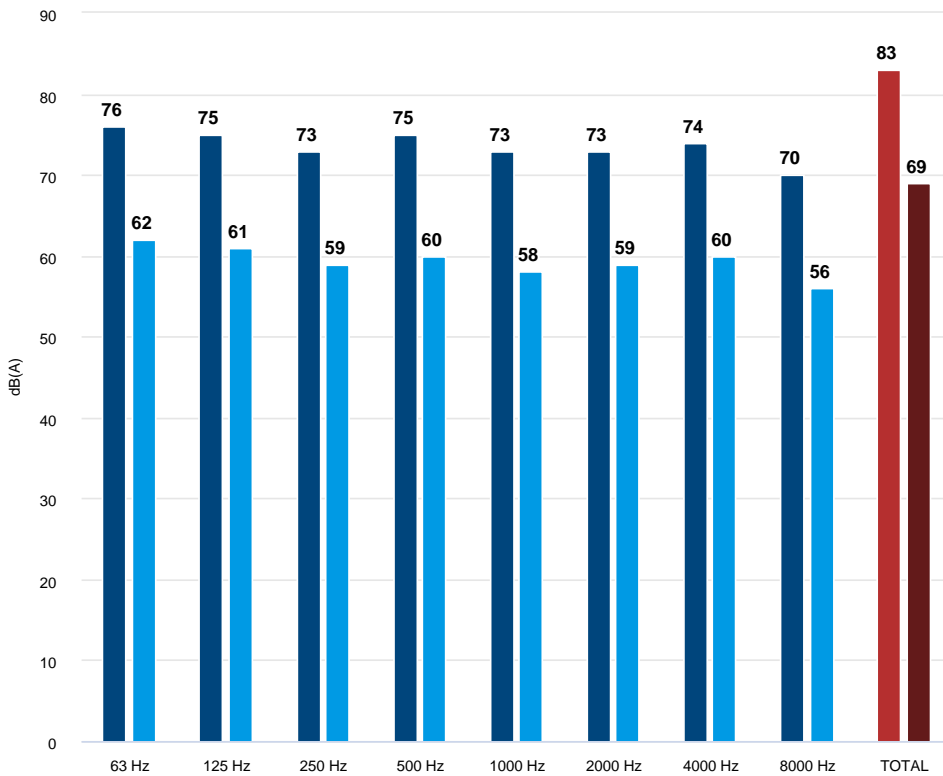
### Fan

RPM	2870	Approx. weight	91 kg	Max. Flow	4280 m <sup>3</sup> /h
-----	------	----------------	-------	-----------	------------------------

### Motor

Power	0,55 kW	RPM	2780	I max. (230V)	2.36 A	I max. (400V)	1.36 A
Approx. weight	12 kg						

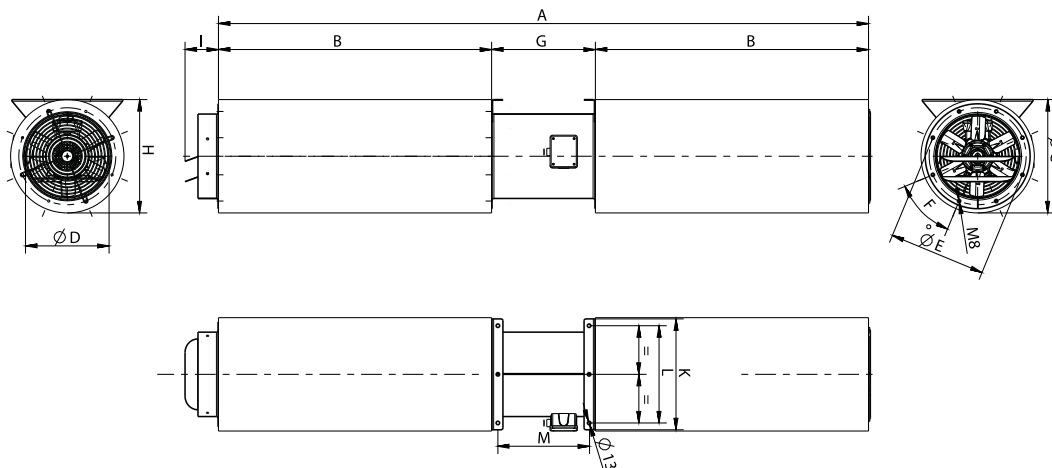
## ACOUSTIC DATA



Sound power	
63 Hz	76
125 Hz	75
250 Hz	73
500 Hz	75
1000 Hz	73
2000 Hz	73
4000 Hz	74
8000 Hz	70
TOTAL	83

Sound pressure 1.5m (in)	
63 Hz	62
125 Hz	61
250 Hz	59
500 Hz	60
1000 Hz	58
2000 Hz	59
4000 Hz	60
8000 Hz	56
TOTAL	69

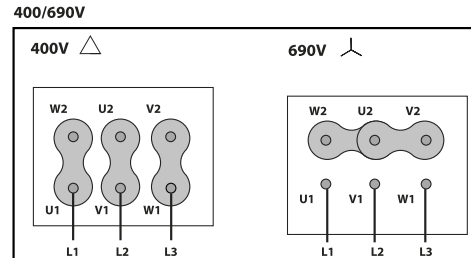
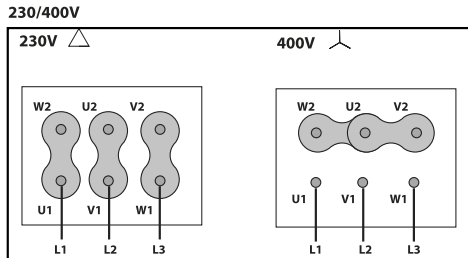
## DIMENSIONS



Dimensions (mm)

A	2380	B	1000	F	8x45 <sup>ø</sup>	G	380	H	415
I	122	K	406	L	356	M	347	Thrust (N)	23
ØC	415	ØD	306	ØE	355				

## WIRING DIAGRAM



## ACCESSORIES



**SAFETY SWITCH  
INT 25 3P A**  
REF: INT253PA



**SAFETY SWITCH FOR 400°C/2h  
INT 400 25A 3P**  
REF: 508902501



**FREQUENCY SPEED CONTROLLER  
SFC 230 I 2,5A \***  
REF: SFC230I003



**FREQUENCY SPEED CONTROLLER  
SFC 400 III 2,2A \***  
REF: SFC400III2



**FREQUENCY SPEED CONTROLLER  
SFC (GENERIC)**



**SAFETY SWITCH  
INT (GENERIC)**



**SAFETY SWITCH FOR 400°C/2h  
INT F400 (GENERIC)**



**ANTI-VIBRATION RUBBER BLOCK  
AVR (GENERIC)**



**ANTI-VIBRATION SPRING BLOCK  
AVS (GENERIC)**