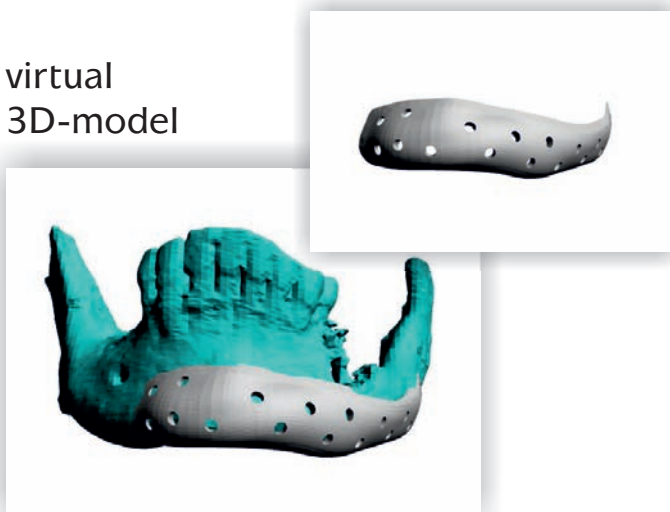


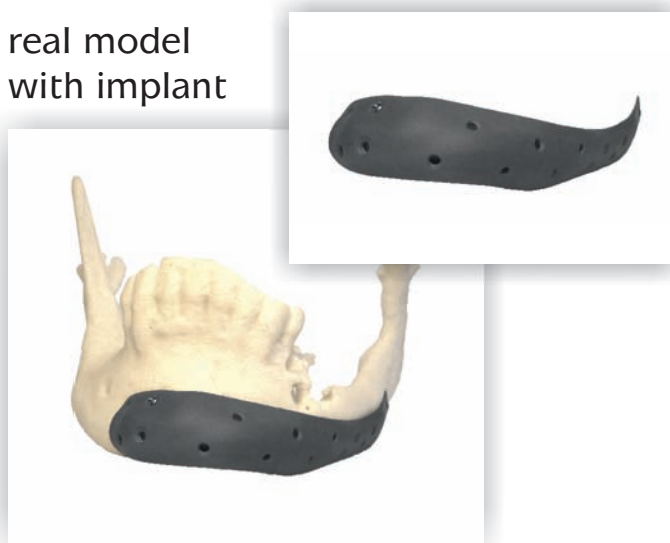
Patient Specific Mandibular Implant

The patient specific mandibular implants will be manufactured according to their specifications.

virtual
3D-model



real model
with implant



Characteristics

- will be designed according to the medical requirements
- stabilization of the jaw bone
- different variants possible
- additionally we provide well sitting resection and positioning templates
- fixed-angle drilling
- if requested, you can receive the data of the implant and the template as a DICOM dataset
- for better illustration purposes, we can provide a patient-specific skull model

Patient Specific Implants made of Titanium

Beside our implant materials **BIOVERIT®II** and **PEEK-OPTIMA®** we offer you also patient specific implants of **Titanium**. Titanium is a non-resorbable high stable metal for the long-term implantation.



Advantages of Titanium

- long term established as implant material in many fields
- excellent proven biocompatibility
- high conductivity
- compatible for aggressive pH-conditions
- resterilization is possible; all conventional procedures for the sterilization are applicable (Steam, Ethylene oxide and Gamma irradiation)

Material

Titanium is a dark grey material, which is highly stable. Due to this stability, it is possible to make the implants very thin. A subsequent machining with OP-tools is very difficult or not possible due to the high strength.

Chemical composition

We use for our titanium alloy Ti6Al4V. Titanium passivates quickly through the formation of a protective oxide layer.