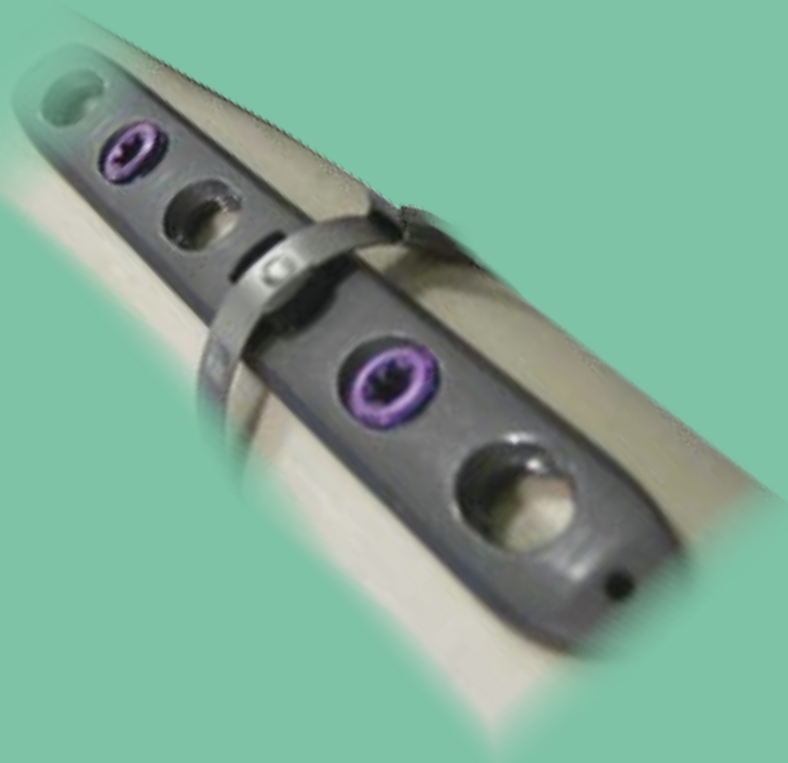


# Sirtalis

## USER'S MANUAL



# Surgical Steps

## Sirtalis - with plate

1. Place a large plate on the bone, then temporarily fix it with two Kirschner wires.



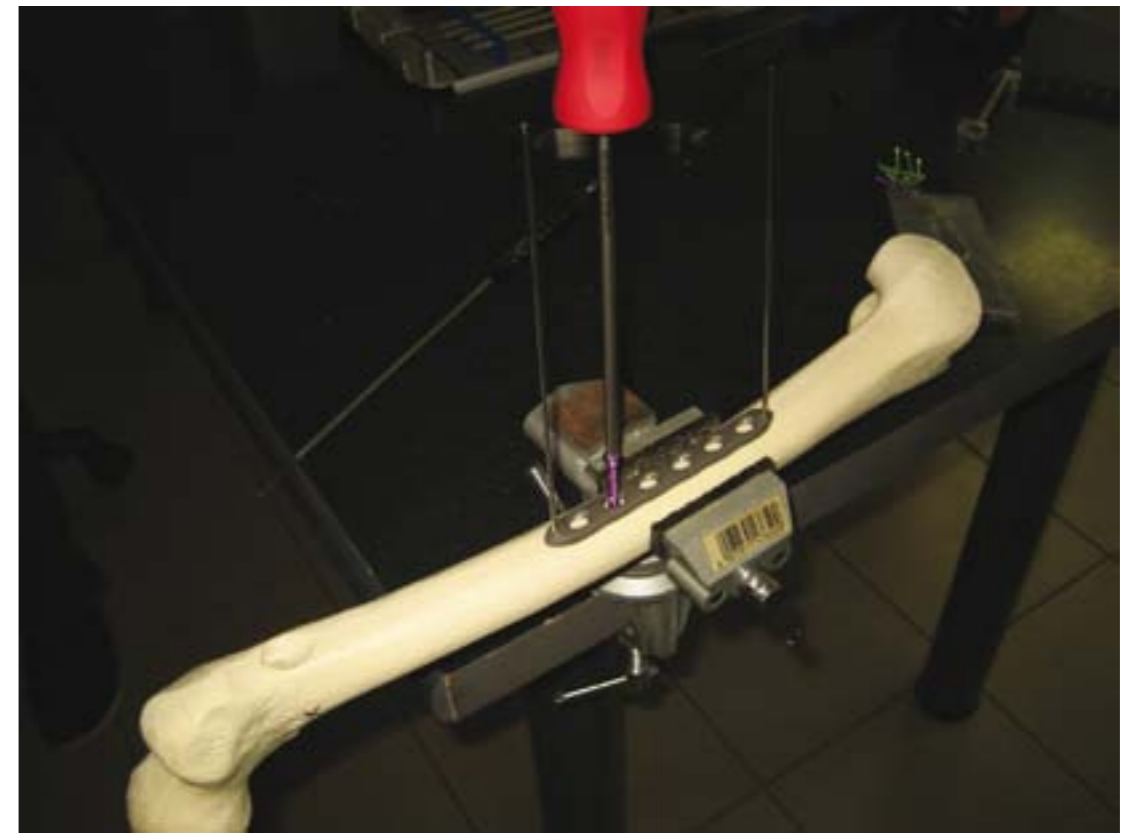
3. Measure the required screw length.



2. Make the pre-drilling for the screw through the sleeve's mono- or polyaxial section.



4. Insert the 5.1mm Vortex screw with the torque screwdriver.



# Surgical Steps

## Sirtalis - with plate

5. Repeat the previous steps with all necessary screws at all necessary holes.



6. Insert the eye to the selected hole with the T25 screwdriver.



7. Pass the band around the bone with the proper sized band feed.



8. Slide the end of the band into the tensioner, lower the locking lever, and tighten the band with the torque screwdriver. Watch for the point of departure of the tensioner!





# Surgical Steps

## Sirtalis - with plate

9. Fold back the ends of the bend with the tensioner.



11. Fold the cut end on the band with the bending tool.



10. Install the spacer and cut the top edge of the band with the cutting pliers.



12. Removal

Cut the tape along the plate and pull the tape out with a flat-nose plier.  
As an alternative solution bend back the previously bent part of the band and pull it out with a flat-nose plier.

# Surgical Steps

## Sirtalis - without plate

1. Slide the spikes onto the band.



2. Tense the band with the tensioner and the torque screwdriver.



3. Fold the end of the band with the tensioner.



4. Install the spacer and cut the top edge of the band with the cutting pliers.



5. Fold the end of the band with the bending tool.





# Surgical Steps

## Overlay plate

1. Install the Vortex plate with the Sirtalis according to points 1-5.



2. Place the overlay plate and modellate it if needed.  
Then tighten the two plates with the connecting screw.



3. Pre-drill through the double drill sleeve's polyaxial or monoaxial side.



4. Measure the length of the necessary polyaxial screw.



# Surgical Steps

## Overlay plate

5. Install the polyaxial screw with the torque screwdriver.



6. Repeat all of the above at all necessary holes.



## Product family

■ ORTHOPAEDICS

■ TRAUMATOLOGY

■ SPINE

■ DENTAL

## Contact

address: 3300 Eger, Faiskola u. 5.

e-mail: [metal@sanatmetal.hu](mailto:metal@sanatmetal.hu)

phone: +36 36 512 900

fax: +36 36 512 932