

UNI-Smile Distractor DELTA System

“Giving people a nice Smile.”



Table of content

I. Introduction	4
II. Features	5
III. Surgical technique	6
IV. Product information	8
V. Patient information	10

UNI-Smile Distractor

I. Introduction



INDICATIONS

Surgically assisted rapid maxillary expansion (SARME) is needed in skeletally matured patients (closed midpalatal suture), to correct a transverse maxillary deficiency or hypoplasia of more than 5 mm. This is frequently seen in adolescents and adults. Those patients are often seen with a unilateral or bilateral posterior crossbite and anterior dental crowding.

PRINCIPLES

1. Simple and efficient
2. Hygienic device
3. Small in all dimensions

TYPES

UNI-Smile Distractor



UNI-Smile Distractor

II. Features

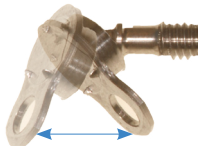


ABUTMENT PLATES

SELFDRILLING SCREW FIXATION

MODULES

BOX



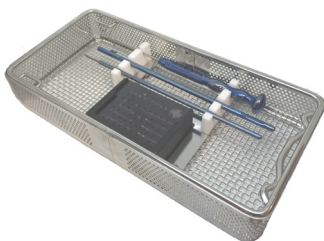
- Small and stable
- Bendable plates in the direction of the bone
- 4 pins for an excellent grip on the bone



- Easy placement
- Excellent fixation
- Selfdrilling
- Easy removable after treatment



- Smallest module on the market
- Hygienic
- Colour coded body
- Smart and easy turning system



The screwdrivers and devices are well organised in a handy, but compact set.



UNI-Smile Distractor

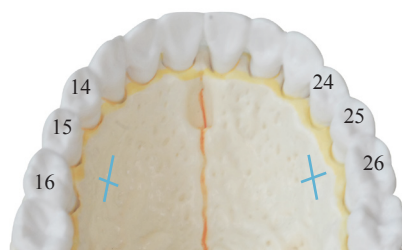
III. Surgical procedure



Sequence of the surgery

1. Corticotomies: lateral + midline (+ posterior disjunction)
2. Placement of the UNI-Smile Distractor with self-drilling screws between teeth n° (14)-15-16 and (24)-25-26

INCISION



A cross palatal incision or an L-incision, between premolar and molar or between premolars has shown to be the ideal location. The incision is made 1 cm downwards as indicated on the picture.

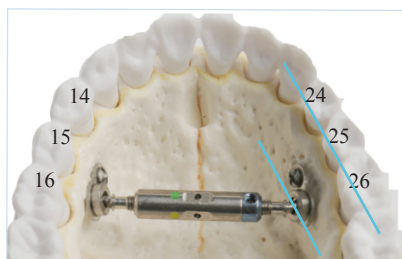
The correct distractor module can be measured bone to bone with the fitting models (IT0400).



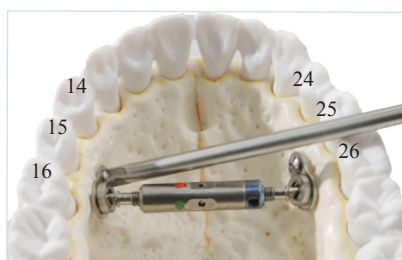
IT0400

PLACEMENT

Blue mark ALWAYS to the left!



The abutment plates are placed horizontally. The blue side is intended for the left side of the patient.



The Smile Distractor must be fixed to the palatal bone with a self-drilling screw on each side (DSSA06 or DSSA07 - screwdriver IT0315).



IT0315

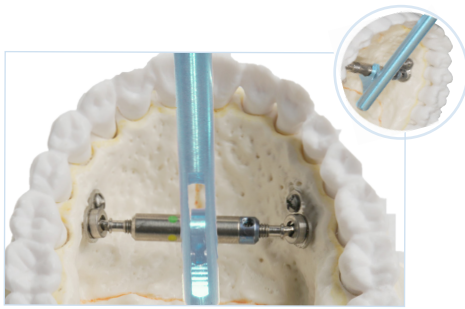
UNI-Smile Distractor

III. Surgical procedure



ACTIVATION

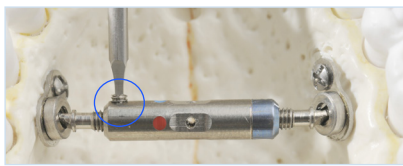
BLOCKING SCREW



The surgeon must activate the Smile Distractor until the two front teeth have an opening of $\pm 1\text{mm}$. To do this, place the key instrument (IT0314) over the middle part of the distractor body and turn from the front to the back.



IT0314



The blocking screw (D002) is placed in one of the two available threaded holes with the screwdriver (IT0128). Place the blocking screw perpendicular over the cylinder, with a clear view of the screw hole. The blocking screw should be fixed real firm, using wrist force.



IT0128

Sequence of the distraction

1. At the end of the surgery, the blocking screw is tightly engaged using wrist force. Place a tampon in case the blocking screw should drop.
2. One week after the surgery the activation of the Smile Distractor is started. Remove the blocking screw and expand until bone resistance is felt, then turn once or twice more. During activation (1 to 2 weeks) the patient should turn two times a day a quarter of a turn. At each quarter of a turn a new colour appears.
3. After completion of the distraction put the blocking screw back real firm, using wrist force. The distractor needs to stay in place 3 to 6 months.

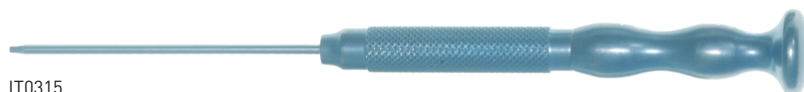


UNI-Smile Distractor

IV. Product information



INSTRUMENTS



IT0315



IT0128



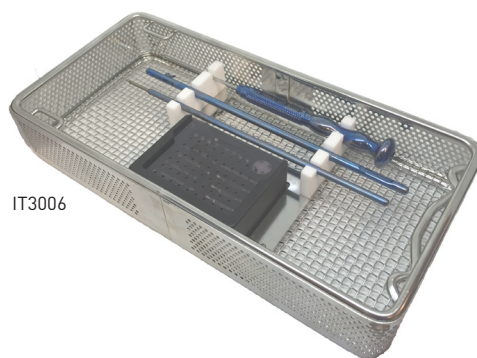
IT0314



IT0400



IT0333



IT3006

Cat. No.	Description
IT0315	Screwdriver Hexagon
IT0128	Screwdriver Internal Hex. Long, Titanium
IT0314	Distractor Key Instrument
IT0400	Pasmodules uni-smile
IT0333	Patient Key Distractor
IT3006	Inox organiser Smile 24x12

UNI-Smile Distractor

IV. Product information



Cat. No.	Description	Total expansion
DSA014	UNI-Smile Distractor 14mm	12
DSA016	UNI-Smile Distractor 16mm	14
DSA018	UNI-Smile Distractor 18mm	16
DSA020	UNI-Smile Distractor 20mm	18

* optional DSA022 and DSA024



Cat. No.	Description	Ø
DSSA06	Self-Drilling Screw 6mm	2.3 mm
DSSA07	Self-Drilling Screw 7mm	2.3 mm

* used with screwdriver IT0315, hexagon



Cat. No.	Description	Ø
D002	Blocking Screw Distractor	2.0 mm

* used with screwdriver IT0128, square



DISTRACTOR

SCREWS

BLOCKINGSCREW

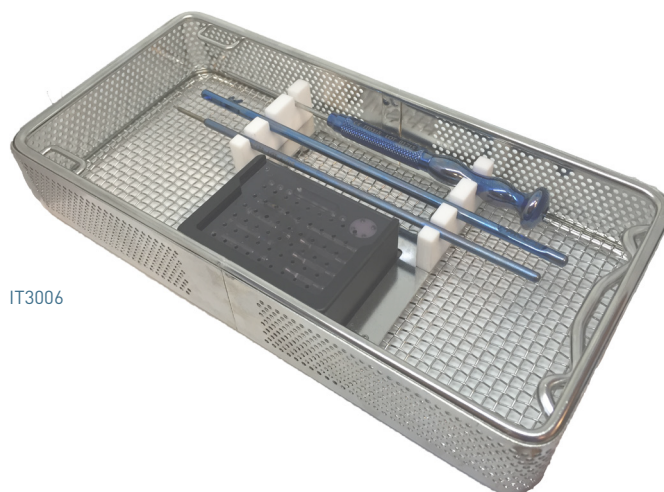


UNI-Smile Distractor

IV. Product information



BOX CONTENT



IT3006

IT3006	Cat. No.	Description	Max. quantity
↙	IT0128	Screwdriver Internal Hex. Long, Titanium	1
↙	IT0314	Distractor key Instrument	1
↙	IT0315	Screwdriver Hexagon	1
↙	IT0400	Pasmodules uni-smile	1
↙	DSA014	UNI-Smile Distractor 14mm	1
↙	DSA016	UNI-Smile Distractor 16mm	1
↙	DSA018	UNI-Smile Distractor 18mm	1
↙	DSA020	UNI-Smile Distractor 20mm	1
↙	DSSA06	Self-Drilling Screw 6mm	4
↙	DSSA07	Self-Drilling Screw 7mm	4
↙	D002	Blocking Screw Distractor	4

UNI-Smile Distractor

V. Patient information



Download the complete patient information at www.titamed.com

DOWNLOAD



Before the widening.



Smile distractor in use.



6 months after widening.

ACTIVATION

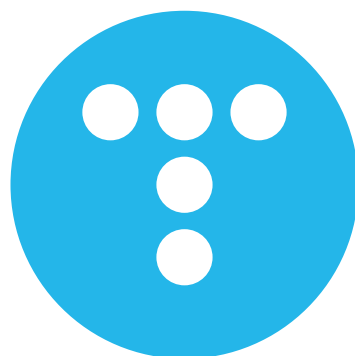


Place the key in the pin-hole and push backwards and downwards to hinge the key on the white joint.



Turn a quarter until the next pin-hole is present. Do so twice a day.





Headquarters:

Titamed
Mechelsesteenweg 315 G
2550 Kontich
Belgium

tel: +32 (0)3 289 51 56
email: info@titamed.be
website: www.titamed.com

version: G1417

