

## Specificatii

Tensiune nominala	12V	
Capacitate nominala (10h)	200Ah	
Dimensiuni	Lungime	522 ± 2mm
	Latime	238 ± 2mm
	Inaltime carcasa	218 ± 2mm
	Inaltime totala (cu borne)	222 ± 2mm
Greutate	Approx 62,5kg	
Tip Borna	FM8	
Material carcasa	ABS	
Capacitate	216,0Ah / 10,8A	20Hr, 1,80V/cell, 25°C
	204,0Ah / 20,4A	10Hr, 1,80V/cell, 25°C
	179,5Ah / 35,9A	5Hr, 1,75V/cell, 25°C
	157,8Ah / 52,6A	3Hr, 1,75V/cell, 25°C
	126,0Ah / 126,0A	1Hr, 1,60V/cell, 25°C
Curent maxim de descarcare	1400A (5s)	
Rezistenta interna	Approx 3,0mΩ	
Interval temp. de utilizare	Descarcare: -15 ÷ 50°C	
	Incarcare: -10 ÷ 50°C	
	Depozitare: -20 ÷ 50°C	
Temp. nominala de utilizare	25 ± 3°C	
Utilizare ciclica	Curent initial de incarcare: <60A. Tensiunea de incarcare: 14,5V ÷ 15,0V la 25°C. Coef. de corectie cu temperatura: -30mV / °C	
Utilizare tampon (stand-by)	Curent initial de incarcare: 60A. Tensiunea de incarcare: 13,5V ÷ 13,8V at 25°C. Coef. de corectie cu temperatura: -18mV / °C	
Influenta temperaturii asupra capacitatii	40°C	102%
	25°C	100%
	0°C	85%
Autodescercare la 25°C	3 luni	Capacitate remanenta: 91%
	6 luni	Capacitate remanenta: 82%
	12 luni	Capacitate remanenta: 65%

## Gama FD / FD12-200

### Utilizari si caracteristici

Tehnologie: VRLA

Surse neinteruptibile de tensiune (UPS)

Sisteme electrice de alimentare (EPS)

Sisteme de semnalizare aeriene si feroviare

Iluminat de siguranta

Centrale electrice

Telecomunicatii

Instalatii solare si eoliene

EN 60896-21,-22

Durata de viata proiectata: 10-12 ani

Eurobat: High Performance

Bateriile din gama FOTON FS pot fi stocate

pina la 6 luni la 25°C dupa care este

recomandata o incarcare de improspatare

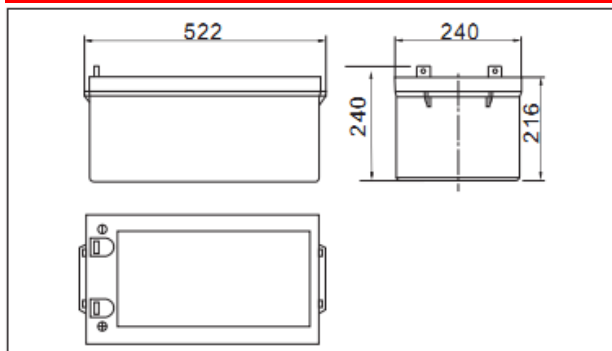
### Descarcare cu curent constant (Amperi) la 25°C

U final / Timp	15min	30min	60min	2h	3h	4h	5h	6h	8h	10h	20h
9.60V	343	205	126	74.5	53.7	42.9	36.6	31.8	25.2	20.8	11.0
9.90V	334	201	124	74.1	53.4	42.6	36.4	31.6	25.0	20.7	11.0
10.2V	322	195	121	73.4	53.0	42.3	36.2	31.4	24.9	20.7	11.0
10.5V	311	190	117	72.3	52.6	42.0	35.9	31.2	24.7	20.5	10.9
10.8V	295	183	113	70.5	51.1	40.8	34.8	30.3	23.9	20.4	10.8

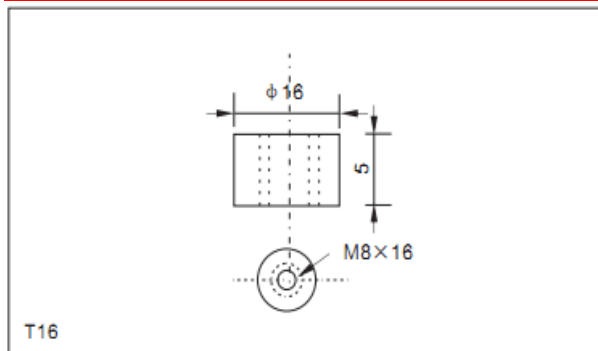
### Descarcare cu putere constanta (Watts/bloc) la 25°C

U final / Timp	15min	30min	60min	2h	3h	4h	5h	6h	8h	10h	20h
9.60V	3763	2300	1437	863	631	504	433	376	299	248	132
9.90V	3673	2254	1416	858	628	501	430	374	297	247	132
10.2V	3537	2185	1380	850	623	498	427	372	295	247	131
10.5V	3417	2132	1337	838	619	494	424	369	293	245	131
10.8V	3236	2054	1293	816	600	479	412	358	284	244	130

### Dimensiuni exterioare (mm)

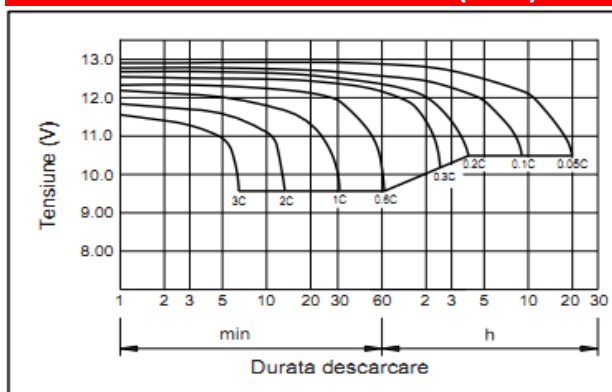


### Tip Borna (mm)

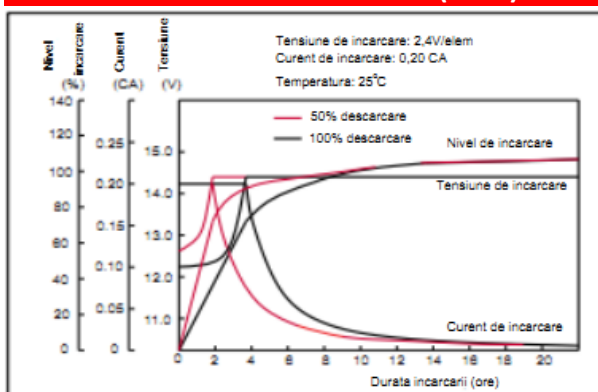


T16

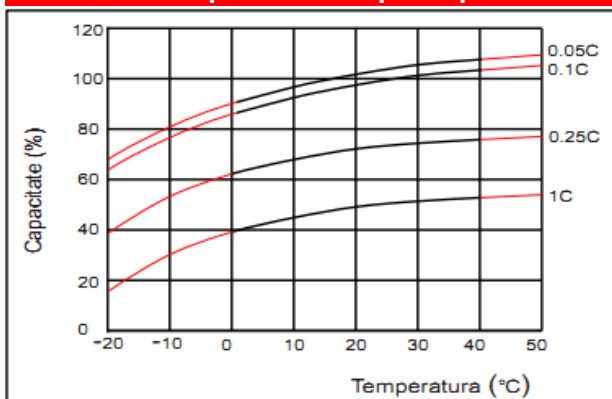
### Caracteristici de descarcare (25°C)



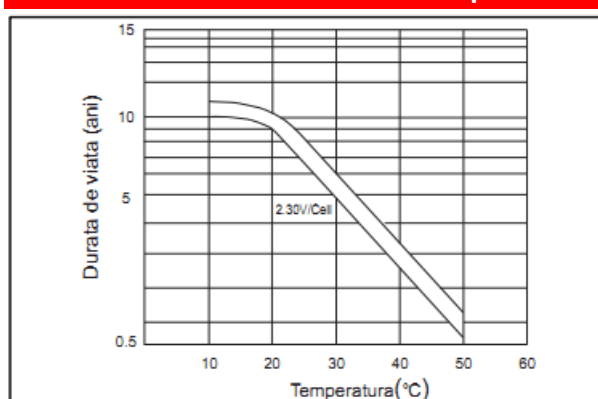
### Caracteristici de incarcare (25°C)



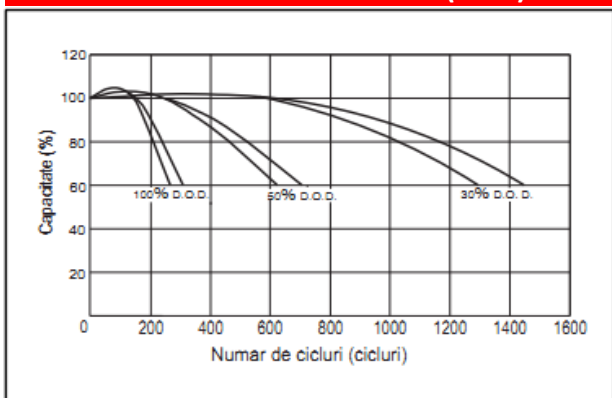
### Efectul temperaturii asupra capacitatii



### Durata de viata in functie de temperatura



### Numar de cicluri vs D.O.D (25°C)



### Relatia tensiune la borne / capacitate (25°C)

