

Specificatii

Tensiune nominala	12V	
Capacitate nominala (10h)	180Ah	
Dimensiuni	Lungime	497 ± 2mm
	Latime	203 ± 2mm
	Inaltime carcasa	228 ± 2mm
	Inaltime totala (cu borne)	237 ± 2mm
Greutate	Approx 58,0kg	
Tip Borna	FM8	
Material carcasa	ABS	

Capacitate	180,0Ah / 18,0A	10Hr, 1,80V/cell, 25°C
	165,0Ah / 33,0A	5Hr, 1,75V/cell, 25°C
	150,6Ah / 50,2A	3Hr, 1,75V/cell, 25°C
	132,0Ah / 132,0A	1Hr, 1,60V/cell, 25°C
Curent maxim de descarcare	1980A (5s)	
Rezistenta interna	Approx 2,47mΩ	
Interval temp. de utilizare	Descarcare: -15 ÷ 50°C	
	Incarcare: -10 ÷ 50°C	
Temp. nominala de utilizare	Depozitare: -20 ÷ 50°C	
	25 ± 3°C	
Utilizare ciclica	Curent initial de incarcare: <54A. Tensiunea de incarcare: 14,5V ÷ 15,0V la 25°C. Coef. de corectie cu temperatura: -30mV / °C	
	Curent initial de incarcare: <54A. Tensiunea de incarcare: 13,5V ÷ 13,8V at 25°C. Coef. de corectie cu temperatura: -18mV / °C	
Influenta temperaturii asupra capacitatii	40°C	102%
	25°C	100%
	0°C	85%
Autodescercare la 25°C	3 luni	Capacitate remanenta: 91%
	6 luni	Capacitate remanenta: 82%
	12 luni	Capacitate remanenta: 65%

Gama FL / FL12-180



Utilizari si caracteristici

Tehnologie: VRLA

Surse neinteruptibile de tensiune (UPS)

Sisteme electrice de alimentare (EPS)

Sisteme de semnalizare aeriene si feroviare

Iluminat de siguranta

Centrale electrice

Sisteme de alarma si securitate

Surse de alimentare cu C.C.

EN 60896-21,-22

Durata de viata proiectata: 12 ani

Eurobat: Long Life

Bateriile din gama FOTON FS pot fi stocate

pina la 6 luni la 25°C dupa care este

recomandata o incarcare de improspatare

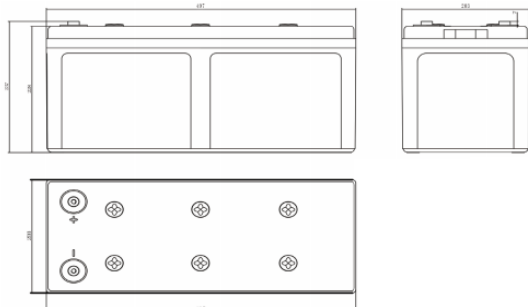
Descarcare cu curent constant (Amperi) la 25°C

Timp U final (V/cell)	min							h						
	5	10	15	20	25	30	45	1	1.5	2	3	5	6	10
1.60	586	477	400	324	274	238	168	132	103	79.6	55.4	34.7	29.7	18.5
1.65	554	459	385	313	266	230	163	128	101	78.0	53.8	34.2	29.3	18.4
1.67	528	444	373	304	258	224	159	125	98.8	76.5	52.7	33.8	28.9	18.3
1.70	516	429	359	296	249	218	156	123	97.1	75.4	51.7	33.2	28.8	18.2
1.75	488	404	345	281	237	208	149	119	94.1	73.3	50.2	33.0	28.4	18.1
1.80	454	376	324	265	226	198	142	114	90.7	71.0	48.1	32.1	27.9	18.0

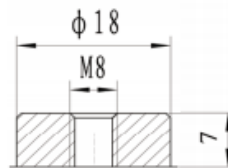
Descarcare cu putere constanta (Watts/cell) la 25°C

Timp U final (V/cell)	min							h						
	5	10	15	20	25	30	45	1	1.5	2	3	5	6	10
1.60	1043	845	695	574	495	440	318	259	194	147	101	68.4	59.9	37.6
1.65	989	810	675	557	486	431	311	252	188	143	97.9	67.2	59.0	36.7
1.67	964	780	660	538	476	423	305	247	182	140	95.9	65.6	57.5	36.5
1.70	935	750	640	518	459	413	300	242	178	138	93.8	64.9	57.1	36.1
1.75	903	720	609	498	444	401	296	235	174	135	92.2	63.8	55.7	35.5
1.80	869	685	587	478	428	385	284	225	169	131	90.5	61.8	54.3	34.4

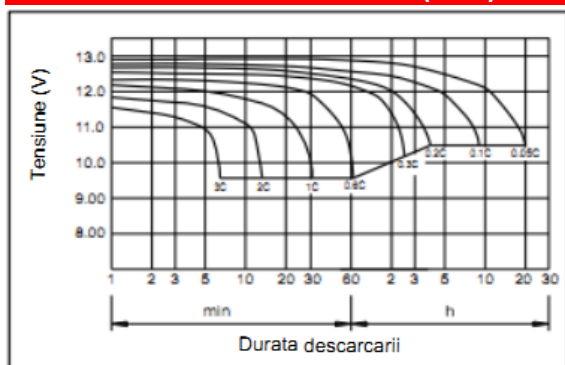
Dimensiuni exterioare (mm)



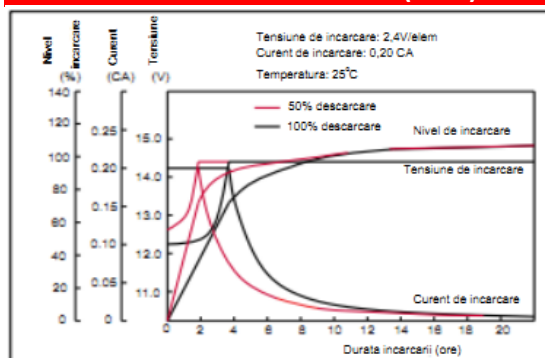
Tip Borna (mm)



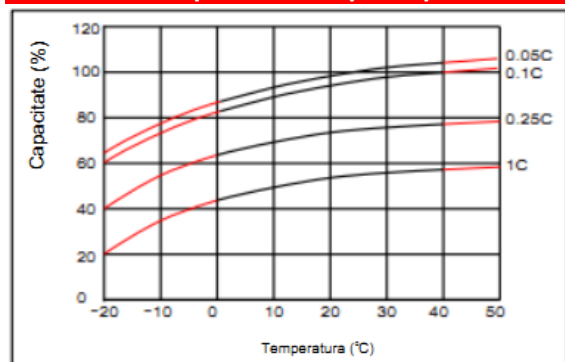
Caracteristici de descarcare (25°C)



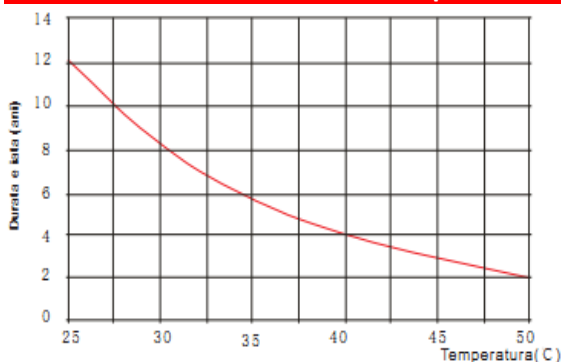
Caracteristici de incarcare (25°C)



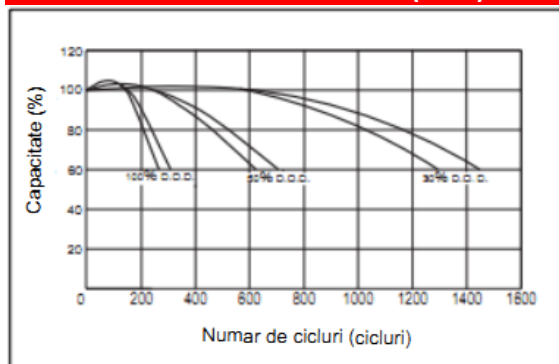
Efectul temperaturii asupra capacitatii



Durata de viata in functie de temperatura



Numar de cicluri vs D.O.D (25°C)



Relatia tensiune la borne / capacitate (25°C)

