



BORMA WACHS®

The Wood Cosmetics Company



ENAMELS



Company

We manufacture professional wood cosmetics for an eco-friendly way of life.

For decades BORMA WACHS has been working in the wood care and synthetic surface treatment sector with a sense of responsibility and constant commitment to pursuing three fundamental principles: quality, reliability and flexibility. The dynamism, production capacity, safety and marketability of our products characterise our company profile. As specialists in the professional cosmetics of wood and synthetic surfaces, we offer our customers only the best of the best.



Certifications

Our products and manufacturing cycles are regularly tested and approved by international institutes.



VOC FREE

All Borma Wachs branded products comply with the latest European legislation on emissions of potentially harmful substances into the atmosphere and have total regard for the environment and the health and wellbeing of our workers and our customers. With the new ECO PREMIUM - VOC FREE line we are able to offer an uncompromising range, with 100% natural and biodegradable products, with a VOC content reduced to zero.



IBR CERTIFICATIONS

Borma Wachs products are tested and approved by the Rosenheim Institute for Green Building. The analyses carried out certify our products regarding the content of VOC's, biocides, heavy metals and radioactive material guaranteeing their eco-compatibility with the principles of Green Building. The Company always aims to understand the needs and sensitivity of customers, trying to better interpret the request for sustainable and environmentally friendly treatments coming from the use of renewable raw materials, in order to reduce as much as possible the impact on environment and on the health of users and all stakeholders in our communities.



EN71.III CERTIFICATION

The Danish laboratories of Eurofins have recognised the compliance of Borma Wachs oils with the EN 71- III regulation on the migration of heavy metals harmful to health, ensuring the safety of the treatments to the point of allowing their use for finishing or maintenance of toys for children.

Enamels



INDEX

Page 6

**Traditional High Coverage 3in1 Enamel
and Converter**

Page 6

**Waterbased High Coverage 3in1 Enamel
and Converter**

Page 7

**Traditional & Waterbased Enamels
& Undercoats
Waterbased 3in1 Gel Enamel,
Iron-Micaceous Enamel**

Page 8/9

Enamels Colour Chart

Page 10

**Heat-Resistant Enamel 3in1
Zinc Primer 2in1
Anchoring Undercoat for
difficult Backgrounds
Antismoke Wall Undercoat
3in1 Gel Enamel**

Page 11

**Waterbased 3in1 Enamel for Radiators
2K Two Components Enamel for Ceramics
Quick Drying Enamel
White Interior Paint - Black interior paint**



BORMA WACHS®
Wood Professional Cosmetics

ENAMELS

HIGH COVERAGE 3IN1 ENAMEL

UNIVERSAL - ANTIRUST

Ready-to-use, easy-to-apply, low-yellowing enamel. Perfect for any type of surface, whether wood or metal, outside as well as inside. Decorates and protects. Available in 27 standard colours as in Colour Chart (page 160).



Recommendations for application:

Apply on a properly cleansed or treated surface pre-coated with High Coverage Undercoat.

Code GLOSSY	Desc.	Pack.
6900XXX-90	125 ml	6 pcs.
6901XXX-90	375 ml	6 pcs.
6902XXX-90	750 ml	6 pcs.
6903XXX-90	2,5 lt	2 pcs.
6904XXX-90	5 lt	2 pcs.

Code MATT	Desc.	Pack.
6900XXX-30	125 ml	6 pcs.
6901XXX-30	375 ml	6 pcs.
6902XXX-30	750 ml	6 pcs.
6903XXX-30	2,5 lt	2 pcs.
6904XXX-30	5 lt	2 pcs.



CONVERTER FOR HIGH COVERAGE 3IN1 ENAMEL

UNIVERSAL - ANTIRUST

Available for Tinting Systems. The four converters allow you to create all RAL and NCS colours, both matt and glossy.



Recommendations for application:

For Use the Borma Colour System pastes and equipment.



Customizable with Borma Colour System

WHITE		
Code	Desc.	Pack.
6930BI-XX	600 ml	6 pcs.
6931BI-XX	2 lt	2 pcs.
6932BI-XX	4 lt	2 pcs.

DARK Colours		
Code	Desc.	Pack.
6930SC-XX	600 ml	6 pcs.
6931SC-XX	2 lt	2 pcs.
6932SC-XX	4 lt	2 pcs.



WATERBASED 3IN1 ANTIRUST ENAMEL

UNIVERSAL - HIGH COVERAGE

Ready-to-use, easy-to-apply, low-yellowing waterbased enamel. Perfect for any type of surface, whether wood or metal, outside as well as inside. Decorates and protects. Available in 27 standard colours as in Colour Chart (page 160).



Recommendations for application:

Apply on a properly cleansed or treated surface pre-coated with High Coverage Waterbased Undercoat.

GLOSSY Code	Desc.	Pack.
NAT6900XXX-90	125 ml	6 pcs.
NAT6901XXX-90	375 ml	6 pcs.
NAT6902XXX-90	750 ml	6 pcs.
NAT6903XXX-90	2,5 lt	2 pcs.
NAT6904XXX-90	5 lt	2 pcs.

MATT Code	Desc.	Pack.
NAT6900XXX-30	125 ml	6 pcs.
NAT6901XXX-30	375 ml	6 pcs.
NAT6902XXX-30	750 ml	6 pcs.
NAT6903XXX-30	2,5 lt	2 pcs.
NAT6904XXX-30	5 lt	2 pcs.



CONVERTER FOR WATERBASED 3IN1 ANTI-RUST ENAMEL

UNIVERSAL - HIGH COVERAGE

Available for tinting systems. The four converters allow you to create all RAL and NCS colours, both in matt and glossy.



Recommendations for application:

To be used with the Borma Colour System pastes and equipment.



Customizable with Borma Colour System

WHITE		
Code	Desc.	Pack.
NAT6930BI-XX	600 ml	6 pcs.
NAT6931BI-XX	2 lt	2 pcs.
NAT6932BI-XX	4 lt	2 pcs.

DARK Colours		
Code	Desc.	Pack.
NAT6930SC-XX	600 ml	6 pcs.
NAT6931SC-XX	2 lt	2 pcs.
NAT6932SC-XX	4 lt	2 pcs.





HIGH COVERAGE 2 IN 1 UNDERCOAT

UNIVERSAL - ANTI-RUST

Ready-to-use, easy-to-apply, enamel. Perfect for metal, outside as well as inside. Blocks and prevents corrosion. Is used as an undercoat for High Coverage 3in1 Anti-Rust Enamel. Available also in a fast-drying "Quick" version. Standard colours: white, RAL 7016, RAL 7035, RAL 2004.



Recommendations for application:

To be applied by brush or spray.

Code WHITE	Desc.	Pack.
6911	375 ml	6 pcs.
6912	750 ml	6 pcs.
6913	2,5 lt	2 pcs.
6914	5 lt	2 pcs.
6910.20	20 lt	

Code RAL	Desc.	Pack.
6916XXXX	375 ml	6 pcs.
6917XXXX	750 ml	6 pcs.
6918XXXX	2,5 lt	2 pcs.
6919XXXX	5 lt	2 pcs.
6915.20XXXX	20 lt	

Code QUICK	Desc.	Pack.
6917XXXX.QK	750 ml	6 pcs.
6918XXXX.QK	2,5 lt	2 pcs.
6919XXXX.QK	5 lt	2 pcs.
6915.20XXXX.QK	20 lt	



HIGH COVERAGE 2 IN 1 UNDERCOAT QUICK

UNIVERSAL - ANTI-RUST

WATERBASED HIGH COVERAGE UNDERCOAT

UNIVERSAL - ANTIRUST

Fast-drying, odourless, waterbased undercoat with anti-corrosive effect, perfect for ferrous metals. Standard colours: white, RAL 2004, RAL 7016 and RAL 7035.



Recommendations for application:

To be protected with Waterbased Universal High Coverage 3in1 Anti-Rust Enamel.

Code WHITE	Desc.	Pack.
NAT6911	375 ml	6 pcs.
NAT6912	750 ml	6 pcs.
NAT6913	2,5 lt	2 pcs.
NAT6914	5 lt	2 pcs.
NAT6910.10	10 lt	
NAT6910.20	20 lt	

Code RAL	Desc.	Pack.
NAT6916XXXX	375 ml	6 pcs.
NAT6917XXXX	750 ml	6 pcs.
NAT6918XXXX	2,5 lt	2 pcs.
NAT6919XXXX	5 lt	2 pcs.
NAT6915XXXX.10	10 lt	
NAT6915XXXX.20	20 lt	



WATERBASED 3IN1 GEL ENAMEL

UNIVERSAL - VERTICAL - ANTIRUST

Waterbased fast-drying self-sealing anti-corrosion enamel. Perfect for any type of surface, whether wood or metal, outside as well as inside. Designed specifically to perform ideally on vertical surfaces. No dripping. Glossy version available in the following colours: white 50, jet black RAL9005, oyster white RAL1013, fire red RAL3000, chocolate brown RAL8017, moss green RAL6005, traffic blue RAL5017, silver grey RAL7001, signal brown RAL8002, nut brown RAL8011, graphite grey RAL7024.



Recommendations for application:

High viscosity, perfect for brush application.

Code	Desc.	Pack.
NA6990XXXX3X1XX	125 ml	6 pcs.
NA6991XXXX3X1XX	375 ml	6 pcs.
NA6992XXXX3X1XX	750 ml	6 pcs.
NA6993XXXX3X1XX	2,5 lt	2 pcs.
NA6994XXXX3X1XX	5 lt	2 pcs.
NA6995XXXX3X1XX	20 lt	



IRON-MICACEOUS ENAMEL

Ready-to-use, easy-to-apply, enamel. Perfect for metal, outside as well as inside. Matt metallic effect with anti-corrosion properties. Great resistance and coverage. Available in 6 standard colours as in Colour Chart



Recommendations for application:

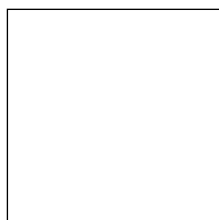
Aged effect, medium-small grain.

Code	Desc.	Pack.
6940XX	125 ml	6 pcs.
6941XX	375 ml	6 pcs.
6942XX	750 ml	6 pcs.
6943XX	2,5 lt	2 pcs.
6944XX	5 lt	2 pcs.
6940XX.20	20 lt	

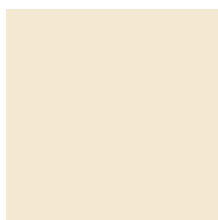


3in1 Enamels Colour Chart:

GLOSSY 690Xxxxx-90 and NAT690Xxxxx-90



RAL 9010
WHITE



RAL 1013
OYSTER WHITE



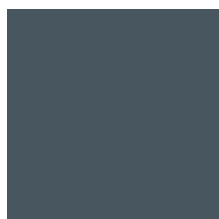
RAL 1015
LIGHT IVORY



RAL 7030
STONE GREY



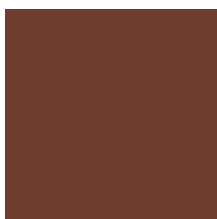
RAL 7001
SILVER GREY



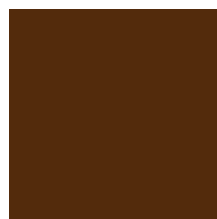
RAL 7011
IRON GREY



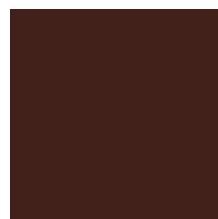
RAL 7016
ANTHRACITE GREY



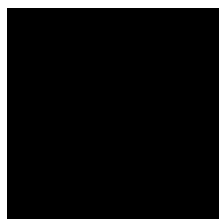
RAL 8002
SIGNAL BROWN



RAL 8011
NUT BROWN



RAL 8017
CHOCOLATE BROWN



RAL 8022
BLACK BROWN



RAL 9005
BLACK



RAL 6002
LEAF GREEN



RAL 6028
PINE GREEN



RAL 6005
MOSS GREEN



RAL 6009
FIR GREEN



RAL 1033
DAHLIA YELLOW



RAL 3001
SIGNAL RED



RAL 3003
RUBY RED



RAL 5017
TRAFFIC BLUE



RAL 5013
COBALT BLUE



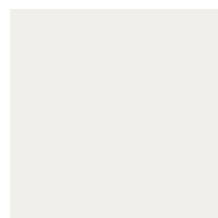
RAL 1021
COLZA YELLOW



RAL 3000
FLAME RED



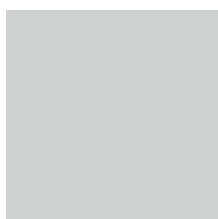
RAL 5012
LIGHT BLUE



RAL 9002
GREY WHITE

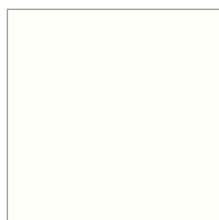


RAL 2004
PURE ORANGE

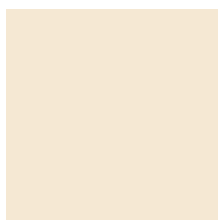


RAL 7035
LIGHT GREY

3in1 Enamels Colour Chart: MATT 690Xxxxx-30 and NAT690Xxxxx-30



RAL 9010
WHITE



RAL 1013
OYSTER WHITE



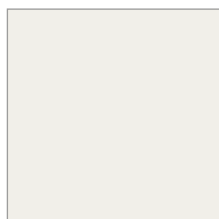
RAL 6005
MOSS GREEN



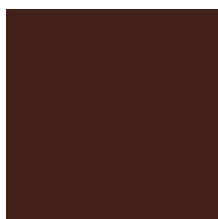
RAL8022
BLACK BROWN



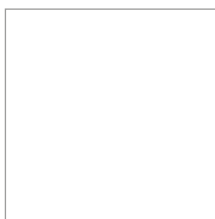
RAL 9005
BLACK



RAL 9002
GREY WHITE

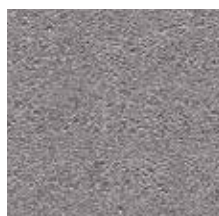


RAL8017
CHOCOLATE BROWN

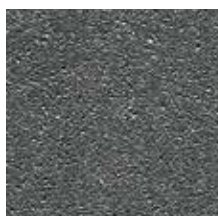


50
WHITE

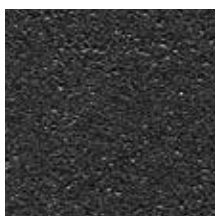
IRON-MICASEOUS Enamel Colour Chart: 694X-XX



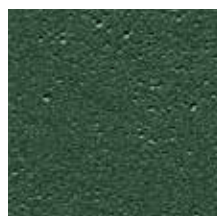
100
LIGHT GREY



101
MEDIUM GREY



145
DARK GREY



137
GREEN



20
COPPER



63
BROWN

ENAMELS

HEAT RESISTANT ENAMEL 3IN1

Protective alkyd-silica based enamel designed for metal as well as cement surfaces or structures that are exposed to high temperatures (e.g. smoke exhaust pipes, stoves, and boilers). Resistant to non-continuous temperatures of up to 800°C. Semi-loss effect. Available in black and aluminium colours. The 125 ml format is perfect for touch up.



Recommendations for application:

Easy-to-apply by roller, spray or brush. Suitable for touch-up operations on previously treated surfaces.

Code	Semi-Gloss	Desc.	Pack.
6950XX		125 ml	6 pcs.
6952XX		750 ml	6 pcs.
6953XX		2,5 lt	6 pcs.
6950XX.20		20 lt	

Code	Matt	Desc.	Pack.
6950XX-30		125 ml	6 pcs.
6952XX-30		750 ml	6 pcs.
6953XX-30		2,5 lt	6 pcs.
6950XX.20-30		20 lt	



ZINC PRIMER 2IN1

Special protective single-component enamel for Interiors and Exteriors. To be applied by brush. Perfect for protecting metal structures outdoors as well as indoors. Guarantees superficial resistance to external corrosive agents.



Recommendations for application:

Ideal for joints and metallic construction elements in general.

Code	Desc.	Pack.
6960	125 ml	6 pcs.
6961	375 ml	6 pcs.
6962	750 ml	6 pcs.
6963	2,5 lt	2 pcs.
6964	5 lt	2 pcs.



ANCHORING UNDERCOAT FOR DIFFICULT BACKGROUNDS

Special anchoring undercoat for galvanized sheet metal or difficult metals in general (cast iron, copper, brass, steel) and plastic materials such as PVC. Allows overcoating with any type of enamel.



Recommendations for application:

Suitable for Interiors and Exteriors.

Code	Desc.	Pack.
6971	375 ml	6 pcs.
6972	750 ml	6 pcs.
6973	2,5 lt	2 pcs.
6974	5 lt	2 pcs.
6970.20	20 lt	



ANTISMOKE WALL UNDERCOAT SPECIAL COVERING

Insulating and stain-covering primer for walls. Effectively covers and allows overcoating of smoke-stained or other types of grease-stained walls.



Recommendations for application:

To be applied as a preliminary treatment before waterbased paints.

Code	Desc.	Pack.
6982BI	750 ml	6 pcs.
6983BI	2,5 lt	2 pcs.
6984BI	5 lt	2 pcs.
6980BI.20	20 lt	



3IN1 GEL ENAMEL

UNIVERSAL – VERTICAL - ANTIRUST

Especially for vertical surfaces and undercuts, facilitates the application to gates, doors, grates and similar structures, even directly on rust. Does not need any primers and can be used on any surface (wood, iron, wall). Glossy version available in the following colours: white 50, jet black RAL9005, oyster white RAL1013, fire red RAL3000, chocolate brown RAL8017, moss green RAL6005, traffic blue RAL5017, silver grey RAL7001, signal brown RAL8002, nut brown RAL8011, graphite grey RAL7024.



Recommendations for application:

Ideal for brush application.

Code	Glossy	Desc.	Pack.
6990XXXX-3X1-90		125 ml	6 pcs.
6991XXXX-3X1-90		375 ml	6 pcs.
6992XXXX-3X1-90		750 ml	6 pcs.
6993XXXX-3X1-90		2,5 lt	2 pcs.
6994XXXX-3X1-90		5 lt	2 pcs.
6990XXXX203X190		20 lt	

Code	Matt	Desc.	Pack.
6990XXXX-3X1-30		125 ml	6 pcs.
6991XXXX-3X1-30		375 ml	6 pcs.
6992XXXX-3X1-30		750 ml	6 pcs.
6993XXXX-3X1-30		2,5 lt	2 pcs.
6994XXXX-3X1-30		5 lt	2 pcs.
6990XXXX203X130		20 lt	





WATERBASED 3IN1 HEAT RESISTANT ENAMEL

SPECIAL FOR RADIATORS - ANTIRUST

Fast-drying and odourless, self-sealing anti-rust enamel, ideal for surfaces exposed to heat. Applied by brush or by spray directly to cast iron or aluminium radiators at home. Available in white glossy and matt version.



Recommendations for application:

Ideal for brush application.

Code	Desc.	Pack.
NAT6921BI-XX	375 ml	6 pcs.
NAT6922BI-XX	750 ml	6 pcs.
NAT6923BI-XX	2,5 lt	2 pcs.
NAT6924BI-XX	5 lt	2 pcs.



+5°C
+30°C



2K TWO COMPONENTS ENAMEL FOR CERAMICS

Perfect for the repair and renewal of bathroom surfaces and ceramic appliances in general. Allows the restoration of corroded and ruined surfaces with only two coats. Doesn't require any particular primers, doesn't peel off, withstands hot water and detergents. Available in white glossy version.



Recommendations for application:

Ideal for brush application.

Code Kit	Desc.	Pack.
6900502K-90	Kit 500+250ml	4 pcs.



QUICK DRYING ENAMEL

UNIVERSAL - ANTIRUST

Fast-drying, self-sealing anti-rust enamel. Ideal for outdoor service iron and wooden manufactured products. Protects them from corrosion and bad weather, guarantees high coverage and uniformity. To be used in metalworks, agricultural and transport machinery.

Glossy version available in the following colours: white 50, black 60, colza yellow RAL1021, Melon Yellow Ma108 RAL1028, pure orange Ma2004 RAL2004, flame red RAL3000, chassis red Ic105 RAL3004, moss green RAL6005, gentian blue Ic071 RAL5010, light grey RAL7035, chocolate brown RAL8017, reseda green RAL6011.



Recommendations for application:

Ideal for spray application.

Code	Desc.	Pack.
6902XXXX-30.QK MATT 30 GLOSS VARIOUS Colours	750 ml	6 pcs.
6902XXXX-90.QK GLOSSY 90 GLOSS VARIOUS Colours	750 ml	6 pcs.
6903XXXX-30.QK MATT 30 GLOSS VARIOUS Colours	2,5 Lt.	2 pcs.
6903XXXX-90.QK GLOSSY 90 GLOSS VARIOUS Colours	2,5 Lt.	2 pcs.
6904XXXX-30.QK MATT 30 GLOSS VARIOUS Colours	5 Lt.	2 pcs.
6904XXXX-90.QK GLOSSY 90 GLOSS VARIOUS Colours	5 Lt.	2 pcs.
6900XX.20-30.QK MATT 30 GLOSS VARIOUS Colours	20 Lt.	
6900XX.20-90.QK GLOSSY 90 GLOSS VARIOUS Colours	20 Lt.	



WHITE INTERIOR PAINT – BLACK INTERIOR PAINT

WATERBASED – FOR FURNITURE

White or black opaque paint for furniture and indoor surfaces, odorless and easy to apply even vertically. With a pleasant matt effect, it is dense and filling. It allows you to effortlessly renovate furnishings, doors, windows, directly in the home environment.



Recommendations for application:

Ideal both for brush and spray.

Code	Desc.	Pack.
TRN69029005-30 BLACK RAL 9005 30 GLOSS	750 ml	6 pcs.
TRN69039005-30 BLACK RAL 9005 30 GLOSS	2,5 Lt.	2 pcs.
TRNAT690250-30 WHITE 50 30 GLOSS	750 ml	6 pcs.
TRNAT690350-30 WHITE 50 30 GLOSS	2,5 Lt.	2 pcs.



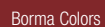
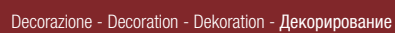
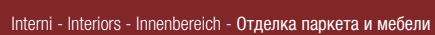
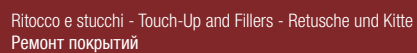
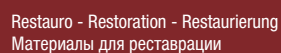


Point

Authorised dealer







Via Industria, 4 - 30029 San Stino di Livenza
Venezia Italy
Tel. +39 0421 951900 - Fax +39 0421 951902

STORIES
KNOW