

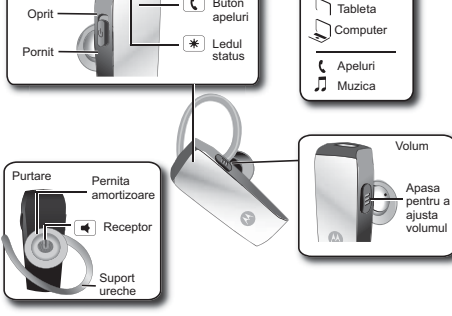


motorola

Hk255 Manual de utilizare

Ghid Rapid

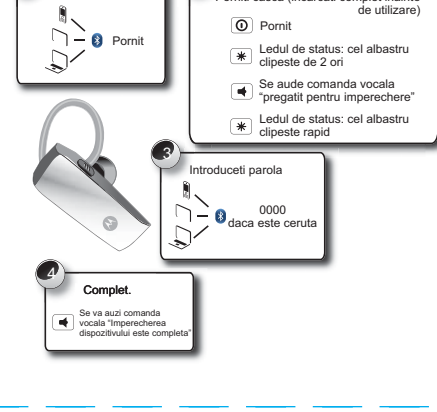
Partile importante, usor si rapid



Nota: Bateria este proiectata sa reziste pe toata durata de viata a produsului. Aceasta ar trebui indepartata doar in scopuri de reciclare. Orice incercare de a indeparta sau inlocui bateria, va deteriora aparatul si va anula garantia.

Nota: Incarcati complet dispozitivul inainte utilizare.

Conectati-va si porniti la drum



Sfat: Pentru utilizarea zilnica, va rugam sa va asigurati ca aveti casca pornita. Casca se va conecta automat la telefon.

Elemente de baza

caracteristici standard, calitate avansata

APELURI

Pentru...	
preluare apel	Apasati butonul
respingeti un apel	Apasati si mentineti apasat butonul
efectuati un apel	Apasati butonul si ve-ti auzi un ton
reapelati ultimul numar	Apasati si mentineti butonul pana cand auziti un ton
puneti pe mut un apel	Apasati si mentineti apasat butonul de volum
incheiere apel	Apasati butonul

Note: Unele caracteristici sunt dependente de telefon/retea. A folosi un dispozitiv mobil sau accesoriu in timpul condusului poate sa va distraga atentia si poate fi ilegal. Conduceti cu prudenta intotdeauna.

Avansat

mai multe lucruri inteligente

Al doilea dispozitiv

Utilizarea a doua telefoane? Sau poate o tableta si un telefon? Imperecherea a doua dispozitive.

- Inaintea imperecherii celui de al doilea dispozitiv, opriti Bluetooth-ul la primul dispozitiv imperecheat cu casca. Acum puteti urma instructiunile cu care ati conectat primul dispozitiv "Conectati si porniti"
- Odata imperecheate, pentru a le conecta nu trebuie decat sa le porniti.
- Pentru a utiliza functiile castilor, cum ar fi initiere sau respingere apel, cu dispozitivul dorit, pur si simplu procedati in mod normal.

Status Led-uri:

O cale usoara de a verifica starea dispozitivului.

Beculetul de status	casca
cel albastru clipeste de doua ori	activare / dezactivare
cel albastru clipeste rapid	conectarea dispozitivului
cel rosu clipeste rapid	bateria este descarcata
rosu constant	incarcare - nivel scazut al bateriei
violet constant	incarcare - nivel mediu al bateriei
albastru constant	incarcare - baterie incarcata complet

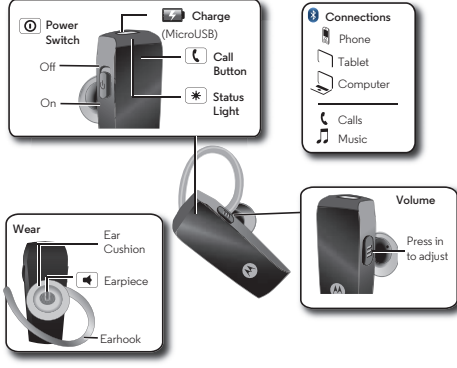


motorola

HK255 User Guide

At a glance

the important bits, quick and easy

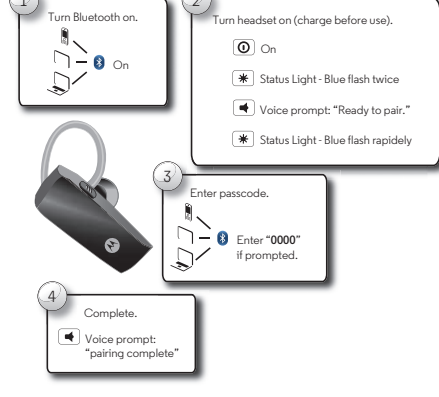


Note: Your battery is designed to last the life of your product. It should only be removed by a recycling facility. Any attempt to remove or replace your battery will damage your headset.

Note: Fully charge before use.

Connect & go

let's get you connected



Tip: For daily use, just make sure your headset is on, and your phone's Bluetooth feature is on. Your headset and phone connect automatically.

Basics

standard features, advanced quality

Calls

To...	
answer a call	Press .
reject a call	Press and hold until you hear a tone.
make a voice dial call	Press and you hear a tone.
redial last call	Press and hold until you hear a tone.
mute or unmute	Press and hold the Volume button .
end a call	Press .

Note: Some features are phone/network dependent.

Note: Using a mobile device or accessory while driving may cause distraction and may be illegal. Always obey the laws and drive safely.

Advanced

more clever stuff

Second device

Using two phones? Or maybe a tablet and a phone? Pair with two devices.

- Before pairing the second device, turn off the Bluetooth feature of the previously paired device. Now pair your second device as normal, see **"Connect & go"**.
- Once paired, to connect to both devices simply turn them on.
- To use headset features, such as voice dial, and end call, with the desired device, just use the feature as normal.

Status light

An easy way to check your headset.

status light	headset
blue flashes twice	turning on/off
rapid blue flashes	connecting to your device
rapid red flashes	battery low
steady red	charging - low battery level
steady purple	charging - mid battery level
steady blue	charging - battery full

Help & more

- **Get help:** Visit www.motorolahome.com/support
- **Find accessories at:** www.motorolahome.com

Manufactured, distributed, or sold by Binatone Electronics International LTD., official licensee for this product. MOTOROLA and the Stylized M Logo are trademarks or registered trademarks of Motorola Trademark Holdings, LLC. and are used under license. Apple logo is a trademark of Apple Inc., registered in the U.S. and other countries. App Store is a service mark of Apple Inc. Google Play and Android are trademarks of Google Inc.

All other trademarks are the property of their respective owners.

© 2016 Motorola Mobility LLC. All rights reserved.

Product ID: MH002

Bluetooth ID: MH002

FCC ID: VLJ-MH002

IC ID: 4522A-MH002