

KONICA MINOLTA



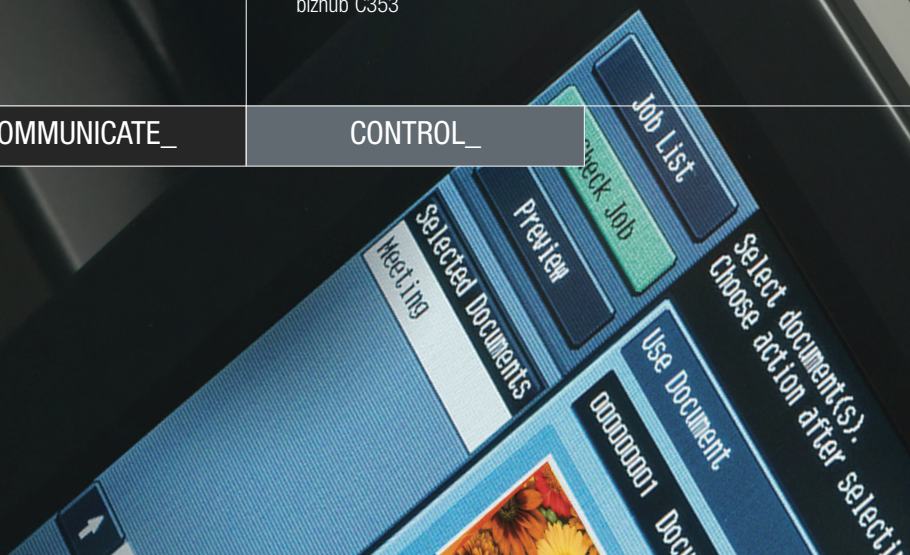
bizhub color: business_by design

bizhub C203
bizhub C253
bizhub C353

CONNECT_

COMMUNICATE_

CONTROL_





bizhub c363

1
2
3

design that attains your goals and keeps you ahead of competitors.

- connects everyone with fast access to more power and productivity.
- communicates in high-speed, high-impact color and cost-effective B&W.
- controls the flow of information with greater ease, speed and security.

design that replaces your current equipment with a full-color, full-function central document resource to save you time and money.

business your way. business that works.
business by design.

business by design ...with **bizhub color.**



Design to simplify operation. A large, high-contrast 8.5" color LCD touch-screen control panel provides simple icons and intuitive menus. Short-cut keys let you customize commands to speed your workflow. You can preview a thumbnail image of documents before you print – and enlarge your thumbnail for a better view.

Design for universal access. In compliance with Section 508, the control panel tilts and rotates left or right to accommodate wheelchair access. Everyone will benefit from blue LCD function key lights and a bigger touch-screen that are easier to see – and paper drawers that slide open more smoothly.



- ▶ **High-productivity bizhub OP.** Konica Minolta's proprietary bizhub OP (Open Platform) control system adheres, adapts and expands to the needs of your growing IT infrastructure. To keep you connected, bizhub OP is a real design advantage.
- ▶ **Integrated bizhub Architecture.** Major functions are consolidated in uniform processing modules for smooth, consistent operation and security – reducing the need for operator training.
- ▶ **Powerful Emperon™ printing.** The Emperon Print System is built in, with Vista drivers* and PCL6, PS3 emulation and XPS for print functionality right out of the box – powered by a 1 GHz CPU.
- ▶ **Seamless bizhub Open API.** Hardware and software work together through Open API (Application Program Interface) to accommodate 3rd-party software for business needs such as cost recovery, account management, automated print control and more.



design to connect: bizhub C203/C253/C353

With bizhub design, everyone stays connected – CEO's to interns, vendors to clients, headquarters to branch offices. Small footprint and 360° access earns bizhub a place at the center of your office, with cords hidden out of sight so it looks good from any angle. And bizhub OP connects form, function, style and productivity – with built-in print control, uniform interface that makes every operator an instant expert, and seamless third-party software integration.



* Not available at time of launch



bizhub C203



bizhub C253



bizhub C353

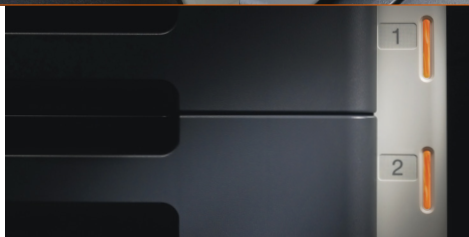
One size fits all? Not in today's world – so bizhub color comes in models designed to fit your business. With bizhub C203, small to mid-sized businesses have 20 ppm color and B&W print/copy output to keep work flowing. The bizhub C253 increases your output speed to 25 ppm in both color and B&W – and bizhub C353 outputs color and B&W documents at up to 35 ppm, so heavy traffic won't compromise your ability to get work done.



Connection begins with the InfoLine. Status lights follow the flow of information in and out, so you can see what's happening at a glance: message transmission and reception, device operating status, maintenance alerts and more.

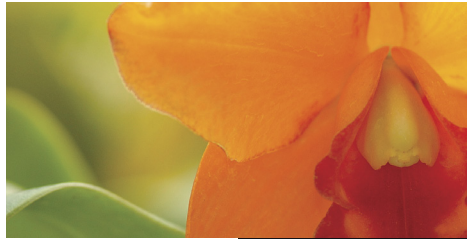


Design for easy loading. Easy-grip handles preserve clean bizhub lines and allow drawers to glide open with just a light touch – loading up to 1,150 sheets in standard configuration, with 500-sheet cassette plus storage drawer option, dual 500-sheet cassette option and a 2,500-sheet Large Capacity Cassette option that raise capacity to a maximum of 3,650 sheets.



Design to protect the environment. On planet Earth, we're all connected – so bizhub provides new power and toner saving modes, low-temperature fusing that saves energy, and other “green” technologies that surpass even the stringent new Energy Star standards.

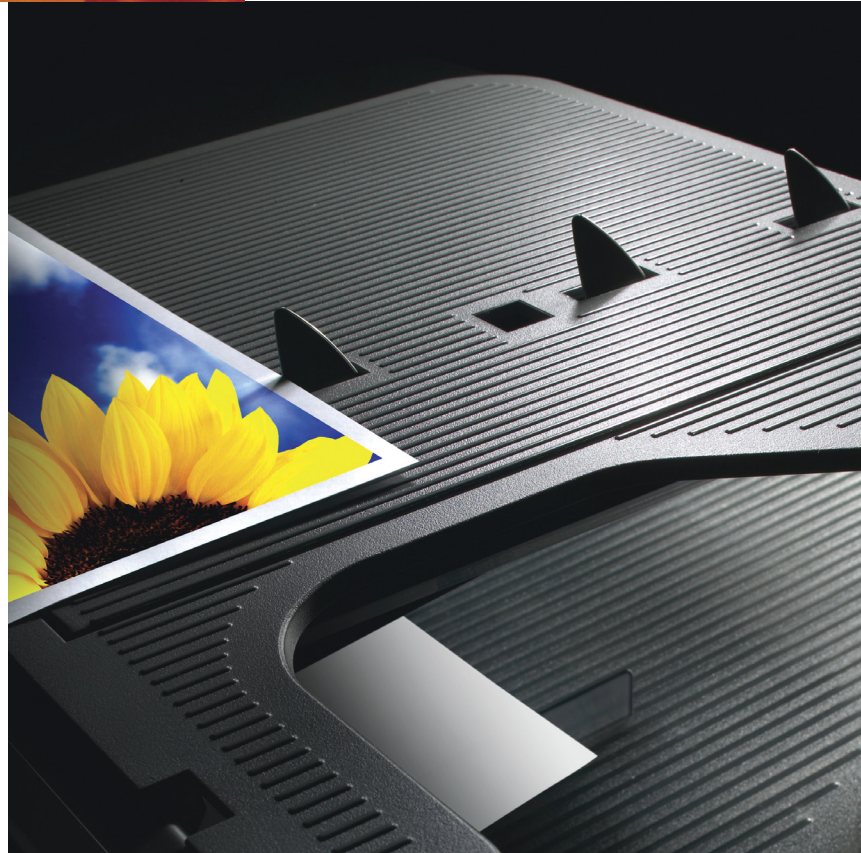
- ◆ **GoGreen Award.** The Konica Minolta practice of assessing environmental impact throughout the full life cycle of each product – which earned us the “GoGreen Company of the Month” Award from Spectrum in March 2007.



Easy-access paper handling. While your bizhub is scanning at high speed, a powerful Auto Document Feeder simplifies the process of loading and unloading originals. Its gray grooved plastic tray makes paper easier to see and pick up – and its ergonomic shape delivers scanned originals below where they're easier to reach. Result: bizhub design that's a pleasure to use.

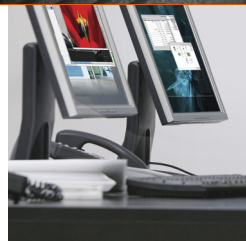


High-speed scanning. All three bizhub models let you scan documents at up to 70 originals per minute – more than a page every second. You can Scan-to-E-mail, attaching documents as PDF, JPEG, TIFF or XPS files. Scan-to-FTP, for quick access via any PC on your network. Scan-to-SMB, sending files to shared folders on desktop PCs. Perform TWAIN scanning from PCs. Even Scan-to-WebDAV, to manage files and folders on a web server – or scan to a USB device for portable storage.



design to communicate: bizhub scanning & sharing.

With bizhub design, you'll have more power to communicate – moving more information more quickly to more destinations. Breaking down barriers. Scanning, storing and sharing with effortless flexibility, including the power to distribute simultaneously to multiple destinations. Backed by the power of PageScope software solutions that communicate effortlessly with your existing network, for device and document management that can revolutionize the way you do business.



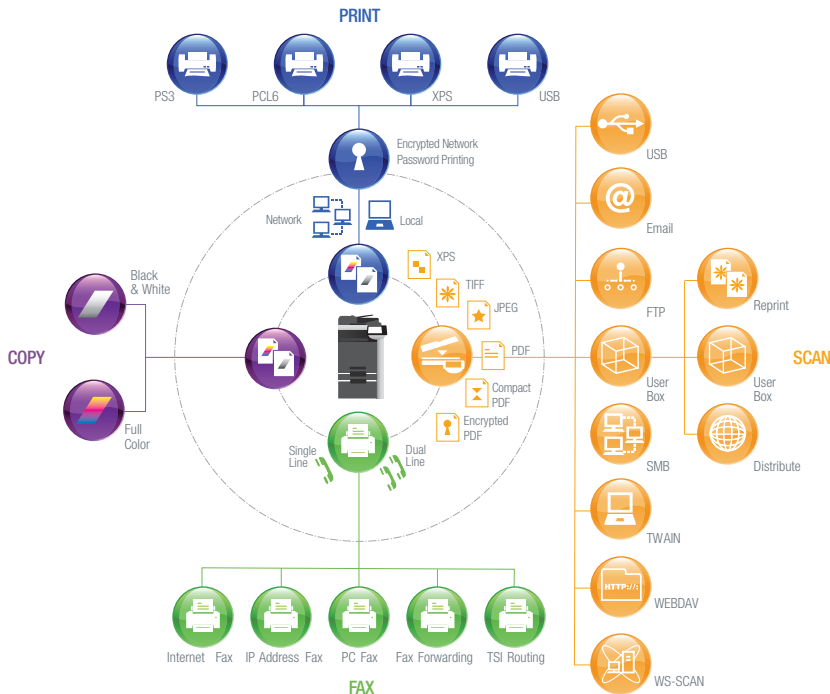
Enhanced User Box functions. Scan-to-User Box lets you save files on a built-in 60 GB hard disk drive. You can assign User Boxes to individuals, departments or workgroups, even allocate User Boxes by theme, project or goal to share and group documents more efficiently.

Scan Annotation for document ID. Documents stored in the Annotation User Box will be automatically numbered and identified for document management purposes.

Fast distribution with bizhub Send. The new scanning feature that lets you accomplish more with less keystrokes – scanning, Emailing and faxing while simultaneously storing a file to a User Box, SMB, FTP or WebDAV Server.



PAGESCOPE SOFTWARE



- ▶ **More power with PageScope software.** An integrated bizhub software suite that works together and speeds your workflow.
- ▶ **PageScope Web Print Assistant** enables you to print documents from Internet websites without cutting off the right edge of the page.
- ▶ **PageScope Log Management Utility** maintains an offline log of your system activity.
- ▶ **PageScope Data Administrator™** manages device user lists, enables account tracking, sets up one-touch Email addresses and manages password and security functions.
- ▶ **PageScope Web Connection** gives each bizhub its own "website" for status monitoring.
- ▶ **PageScope NetCare** lets IT administrators manage systems more easily by combining bizhub and other MIB-compliant devices in a single network.
- ▶ **PageScope Print Status Notifier** tells you that your bizhub job has finished printing, paper has run out or toner needs replacing.
- ▶ **PageScope Box Operator** allows you to download and access scanned data stored in User Boxes from your PC.
- ▶ **PageScope Workware™** (optional) makes it easier to manage scanned documents, view thumbnail images, link files and convert formats.

CONNECT COMMUNICATE CONTROL

Compact PDF for smaller file size. With bizhub scanning, you create high-quality color document files that are smaller in size – and faster to send and receive.

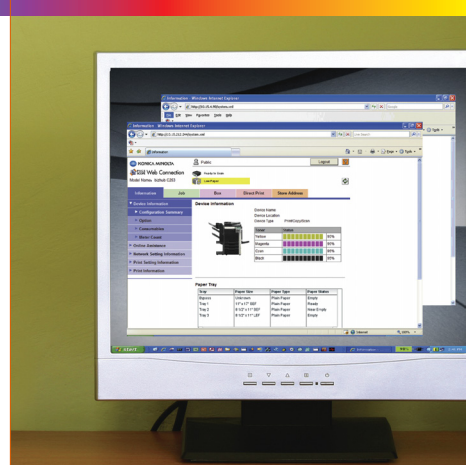
Communicate via USB transfer. A simple EK-603 USB Interface option lets you scan files to a USB thumb-drive and also print files from a USB thumb-drive – including files in PDF, Compact PDF, JPEG, TIFF, encrypted PDF and XPS formats.

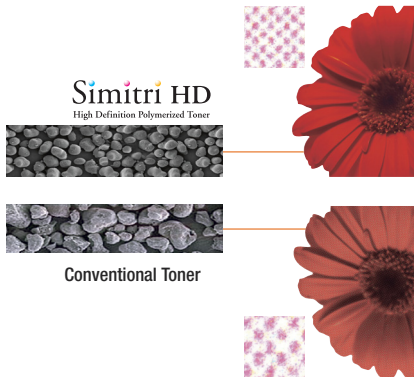
WebDAV: communicating with your server. Your bizhub also provides support for WebDAV (Web-based Distributed Authoring and Versioning) – the advanced system that makes it easier to manage files and folders on your web server, identify authors and dates of web pages, lock documents and track file revisions.

WS-Scan: Windows Vista scanning. Push and Pull scanning using DPWS (WSD) Protocol. Supports XPS, JPEG, BITMAP, PNG and TIFF file formats.

IPv6: the next-generation Internet protocol. IPv6 dramatically increases IP addressing power and gives every networked device its own IP address to facilitate communication and improve security.

High-volume fax communication. For all-in-one functionality, the C353/C253/C203 Fax Kit option provides direct faxing from your PC, IP Address fax capability, TSI routing, 2,000-location address book, broadcasting and program dialing – and the optional ML-501 Fax Multi-Line Kit adds a second phone line to double your input/output traffic.





Spectacular color image quality. Simitri® HD Color Polymerized Toner gives bizhub documents high-impact, high-definition color – sharper text and fine detail, smoother gradations, richer tonality, superior color graphics and halftone reproductions.

Color that won't fade, peel or crack. Oil-less toner fusing at lower temperatures gives you color prints and copies that resist fading – and low-gloss finish lets you fold, overprint or write on prints and copies with no compromise in quality.

The paper you need to get the job done. With 1,150-sheet standard paper capacity, 500-sheet plus storage drawer option, dual 500-sheet cassette option and a 2,500-sheet Large Capacity Cassette option, you'll have maximum paper capacity of 3,650 sheets – plus the ability to print and automatically duplex 140 lb. index stock, print on 12" x 18" paper to preserve crop marks and borders, standard duplexing at full rated speed and a 150-sheet bypass for specialty paper, envelopes and transparencies.

Enhanced color management. The Emperon Print System gives you color management with ICC Profiles. And the bizhub C353 and C253 let you add a powerful Fiery® Image Controller option for advanced color management capabilities.

- ▶ **Industry-leading security protection:** At every stage of your information workflow, bizhub is designed to meet today's most stringent security precautions and regulations.
- ▶ **Encrypted network password printing:** Create your own encryption passphrase to protect authentication credentials.
- ▶ **Encrypted PDF files:** Automatically create an encrypted PDF file during scanning, so confidential data is protected as soon as it enters your workflow.
- ▶ **IP Filtering:** Registers the IP addresses of PC's that are allowed access to your documents.
- ▶ **SSL/TLS Encryption:** Protects data during exchange from bizhub to LDAP servers and PageScope programs.
- ▶ **S/MIME Encryption:** The Secure Multipurpose Internet Mail Extensions encryption standard that protects Email exchanges.
- ▶ **HDD Lock:** Applies password-protection locking to the hard disk drive of your bizhub, preventing it from being read even when removed from your device or any other bizhub.
- ▶ **ISO 15408 EAL 3 Certified System Security:** Konica Minolta's Target Of Evaluation (TOE) for ISO 15408 certification applies to the entire MFP, providing system-wide, end-to-end security. (Registration in progress)



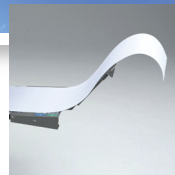
design to control: bizhub printing & security.

With bizhub, you're always in control – improving your image, increasing your output, printing and finishing with every option you need. In-house and on-demand, your bizhub can handle reports and presentations, forms and human-resource documents, flyers and finished booklets. You'll also have more ways to maintain security throughout your workflow, to safeguard sensitive information in the networked era.

Modular finishing options. 60-page booklet-making, multi-position stapling, 2/3-hole punching, and half-folding – with bizhub, you can customize your finishing options for exactly the documents your business needs. And when no finisher is installed, a Job Separator Tray option (JS-505) conveniently separates print, copy, fax and report output.



- ▶ **Job erase without a trace:** After every job, your bizhub can automatically overwrite your HDD up to three times – deleting any trace of job data in compliance with U.S. military standards for the Army (DoD 5220.22-M), Navy (NAVSO P-5239-26) and Air Force (AFSSI5020).
- ▶ **Advanced copy protection:** Prevents re-copying of documents with a selection of concealed watermarks to identify printouts as reprints with hidden messages such as "Confidential" that only appear upon re-copying – no matter which device is used to re-copy.
- ▶ **HDD sanitizing:** Before moving, re-using or disposing of your hard disk drive, HDD Sanitizing can overwrite data in 8 different modes to comply with 11 U.S. military and international security standards – including seven-times overwrite protection (AFSSI5020).
- ▶ **Biometric Authentication Option:** Provides "touch and print" security that can recognize unique physical characteristics of each user – more accurate than fingerprints.



bizhub Secure Print: Lets you set password security locks in place on sensitive documents such as job estimates, employee evaluations, salary reports, business forecasts and sales figures.

User Authentication: Custom-selectable for printing, scanning, faxing and User Box functions – with users identified based on up to 20 Active Directory, NTLM V1 or V2, NDS and LDAP Servers or built-in bizhub authentication functions.

Banner printing. With the optional FS-519 finisher installed, you can output full-color banners up to 11-3/4" x 47-1/4" – a unique bizhub advantage. There is even an optional paper guide MK-713 to easily feed banner paper.



General Specifications	bizhub C203	bizhub C253	bizhub C353
TYPE:	Full-Color Printer/Copier/Scanner with Stationary Platen		
PRINT/COPY PROCESS:	Tandem Process		
TONER TYPE:	Simitri® HD Color Polymerized Toner		
MONTHLY DUTY CYCLE:	60,000 pages	75,000 pages	100,000 pages
PRINT/COPY SPEED:	Full Color: 20 ppm (letter, portrait), B&W: 20 ppm (letter, portrait)	Full Color: 25 ppm (letter, portrait), B&W: 25 ppm (letter, portrait)	Full Color: 35 ppm (letter, portrait), B&W: 35 ppm (letter, portrait)
PRINT/COPY RESOLUTION:	1800 dpi equivalent x 600 dpi		
SCAN SPEED:	Full Color: 70 opm (@ 300 dpi, Letter), 50 opm (@ 600 dpi, letter) B&W: 70 opm (@ 300 dpi, Letter), 55 opm (@ 600 dpi, letter)		
SCAN RESOLUTION:	200 dpi, 300 dpi, 400 dpi, 600 dpi		
SCAN FILE FORMATS:	TIFF, PDF, Compact PDF, JPEG, XPS		
MEMORY:	1,024 MB (shared print, copy, scan and fax memory)		
HARD DISK DRIVE:	60 GB (shared print, copy, scan and fax HDD)		
GRADATION:	256 color shades per pixel		
ORIGINAL SIZE:	Up to 11" x 17" (scanning/copying)		
COPY SIZE:	Up to 11" x 17" full bleed on 12" x 18" paper (printing)		
	Tray 1 (universal cassette): 5.5" x 8.5" to 11" x 17"		
	Tray 2 (universal cassette): 5.5" x 8.5" to 12" x 18"		
WARM UP TIME:	Full Color: Less than 37 seconds, B&W: Less than 27 seconds		Full Color: Less than 41 seconds, B&W: Less than 30 seconds
FIRST COPY TIME:	Full Color: Less than 11.7 seconds (letter), B&W: Less than 7.7 seconds (letter)		Full Color: Less than 8.5 seconds (letter), B&W: Less than 5.9 seconds (letter)
COPY QUANTITY:	1-999		
MAGNIFICATION:	Zoom range: 25% - 400%, 0.1% increments		
	Preset reduction: 79%, 73%, 65%, 50%		
	Preset enlargement: 121%, 129%, 155%, 200%		
COLOR MODES:	Auto Color, Full Color, Black & White, 2-Color, Single Color		
COPY EXPOSURE MODES:	Text (legible text), Text/Photo (clear text and halftones), Photo (optimized for gradations), Map (fine edges and legible text), Dot Matrix (dot matrix or pencil originals), Copied Paper		
FAXING (optional):	Super G3 compatibility MH, MR, MMR, JBIG data compression 33.6 Kbps modem speed F-Code Support		
FAX TRANSMISSION SPEED:	Less than 3 seconds/page (V.34, JBIG, Standard Resolution)		
FAX MEMORY:	1024MB (shared copier memory)		
FAX EXPOSURE MODES:	Text, Text/Photo, Photo, Dot Matrix		
STANDARD PAPER SIZE:	500-sheet universal cassette (16 lb. bond to 140 lb. index)		
	500-sheet universal cassette (16 lb. bond to 140 lb. index)		
	150-sheet bypass (16 lb. bond to 100 lb. cover or up to 271 gsm)		
MAXIMUM PAPER CAPACITY:	3,650 sheets (total, with options)		
DOCUMENT FEEDER (OPTIONAL):	DF-611 Auto Document Feeder, Speed: Full Color: 70 opm, B&W: 70 opm		
	Paper Capacity: 100 sheets, Paper Size: 5.5" x 8.5" to 11" x 17"		
	Paper Weight: Single-sided: 9.25" lb. bond to 55.75 lb. bond Double-sided or mixed: 13.25 lb. bond to 34lb. bond		
POWER REQUIREMENTS:	120V, 60Hz		
POWER CONSUMPTION:	Less than 1.5kW		
DIMENSIONS (W X D X H)	25.25" x 33.5" x 30.25"		
WEIGHT:	218 lb.		
OPTIONS:	AU-101 Biometric Authentication Unit		
	DF-611 Reversing Automatic Document Feeder		
	DK-504 Copy Desk		
	EK-603 USB Host Kit		
	C353/C253/C203 Fax Kit		
	FS-519 Built-In Base Finisher		
	JS-505 Job Separator		
	MK-711 Option Mount Kit		
	MK-713 Banner Set Guide		
	ML-501 Fax Multi-Line Kit		
	MT-502 Mailbin Kit (for FS-519)		
	OC-507 Original Cover		
	OT-602 Additional Tray (for FS-519)		
	PC-104 Paper Feed Cabinet		
	PC-204 Paper Feed Cabinet		
	PC-405 Paper Feed Cabinet		
	PK-515 Punch Kit (for FS-519)		
	SA-501 Scan Accelerator Kit		
	SC-503 HDD Encryption Kit		
	SD-505 Saddle Stitcher Kit (for FS-519)		
	SP-501 Fax Stamp Unit		
	Spare TX Marker Stamp 2		
	WT-502 Working Table		



General Specifications

bizhub C203

bizhub C253

bizhub C353

AVAILABLE PRINT/COPY FUNCTIONS:

Account Track (1,000 accounts), Auto Duplex, Auto Tray Switching, Banner Printing (with FS-519), Bi-Directional Communication, Color Modes & Functions (Auto Color/Full Color, Black & White Mode, Single Color Mode, 2-Color Mode, Color Adjustments - Brightness, Contrast, Saturation, Sharpness, Red, Green, Blue, Portrait, Hue, Density, Color Balance, Copy Density, Sample Copy), Copy Modes (Simplex/Duplex, 2-in-1, 4-in-1, 8-in-1, Book, Booklet, Booklet + Bind), Cover Mode, Creative Functions (Mirror Image, XY Zoom, Image Center, Base Color, Neg./Pos. Reverse, Image Repeat), Encrypted Network Password Printing, Energy Save Mode, Enlarge Display, Erase (Border, Frame, Edge) Mode, Finishing (Group, Sort, Staple, Punch, Half-Fold, Center Staple and Fold), Form Overlay, Glossy Mode, HDD Random Erase, Image Adjustments (Color Matching, Pure Black Auto ON/OFF, Color Balance, Screen Settings, Image Smoothing ON/OFF), Image Preview (Job Finishing Image Display, Engine Configuration Display), Interrupt, Job List, Job Erase, Job Reserve, LDAP, OHP Interleaving, Mixplex, Mix-Media, Program/Recall Jobs, Paper Type Selection (Normal, Thick 1, Thick 2, Thick 3, Thick 4), Print Modes (Simplex/Duplex, 2-in-1, 4-in-1, 6-in-1, 9-in-1, 16-in-1, Booklet, Booklet + Bind), Proof Copy, Secure Printing, Separate Scan, Text Enhancement, User Authentication (Up to 20 Authentication Servers) (Synchronize w/Account Track), User Box Function, Utility (Meter Count, Environment Setting, Default Setting, One-Touch Setting, Check Consumables Life), Administration Mode, Watermarks, Zoom Selection

AVAILABLE SCAN FUNCTIONS:

Scan-to-Email, Scan-to-FTP, Scan-to-SMB (Scan-to-Desktop), Scan-to-HDD (Scan-to-User Box), Scan-to-WebDAV, Scan-to-USB, Network TWAIN, WS-Scan

AVAILABLE FAX FUNCTIONS:

Autodialing (2,000 one-touches), Auto Memory Reception, Auto Reduction Printing, Broadcasting (maximum 605 locations), Bulletin Board, Duplex Transmission/Reception, Exposure Mode, Group Dialing (up to 500 one-touches per group), Image Rotation Transmission/Reception, Mailbox Transmission/Reception, Memory/Quick Dial, Overseas Transmission, Password Transmission/Reception, PC-Fax, Polling Transmission/Reception, Priority Transmission, Print Setting for Overnight Reception, Program Dialing (400 programs), Redial, Relay Broadcasting, Relay Transmission, Remote Reception, Timer Transmission



Emperon Print System (standard):

PROCESSOR

1 GHz (MC7447A)

RAM:

1,024 MB (shared copier memory)

HDD:

60 GB (shared copier HDD)

PAGE DESCRIPTION LANGUAGE:

PCL5e/c, PCL6 (XL version 3.0) Emulation, PS3 (version 3016) Emulation, XPS (XML Paper Specification)

FONTS:

PCL: 80 fonts, Postscript 3 Emulation: 137 fonts

PRINT DRIVERS:

PCL6: Windows 2000, Windows XP (Home/Professional), Windows Server 2003, Windows XP Professional x64, Windows Server 2003 x64, Windows NT 4.0, Windows Vista (x32, x64)*
 PS3: Windows 2000, Windows XP (Home/Professional), Windows Server 2003, Windows XP Professional x64, Windows Server 2003 x64, Windows Vista (x32, x64)*
 Mac OS 9.2 (PPD File), Mac OS X 10.2, 10.3, 10.4, Intel-based 10.4 (print driver)

INTERFACE:

10BASE-T/100BASE-TX/1000BASE-T, USB 1.1, USB 2.0

PROTOCOLS:

TCP/IP, IPX/SPX, AppleTalk (EtherTalk), LPR, SMB, LPD, Netware (4.x, 5.6), Pserver, Nprinter, NDPS, IPP1.1, SMTP, POP3, LDAP, SSL/TLS, SNMP, HTTP/HTTPS, IPv6, DPWS (WSD)*

APPLICATIONS:

Network & Device Management:

PageScope NetCare

PageScope NDPS Gateway

PageScope EMS Plug-Ins

PageScope Network Setup

PageScope Data Administrator

Driver Packaging Utility

HDD Back-Up Utility

Download Manager (ICC Color Profile Utility)

Log Management Utility*

User Tools:

PageScope Web Connection

PageScope Direct Print

PageScope Box Operator

PageScope Print Status Notifier

Web Print Assistant

Font Management Utility

Copy Protect Utility

Print Utility for Unix

bizhub vCare support

MANAGEMENT TOOLS:

PageScope Workware

OPTIONAL SOFTWARE:

Design and specifications are subject to change without notice. *Not available at the time of launch.



bizhub 



Office imagery courtesy of Knoll, Inc.

© 2007 KONICA MINOLTA BUSINESS SOLUTIONS U.S.A., INC. All rights reserved. Reproduction in whole or in part without written permission is prohibited. Konica Minolta and The essentials of imaging are trademarks of KONICA MINOLTA HOLDINGS, INC. bizhub, Data Administrator, Emperon, PageScope and Workware are trademarks of KONICA MINOLTA BUSINESS TECHNOLOGIES, INC. Simitri is a registered trademark of KONICA MINOLTA BUSINESS SOLUTIONS. All other brands and product names are registered trademarks or trademarks of their respective owners.

Design and specifications are subject to change without notice.

Some functions may require options, which may or may not be available at time of launch.



KONICA MINOLTA

KONICA MINOLTA
BUSINESS SOLUTIONS U.S.A., INC.

100 Williams Drive
Ramsey, NJ 07446

www.kmbs.konicaminolta.us
www.kmbs.konicaminolta.us/solutions